


STUDY PROTOCOL

Open Access



# Cooperation between geriatricians and general practitioners for improved pharmacotherapy in home-dwelling elderly people receiving polypharmacy – the COOP Study: study protocol for a cluster randomised controlled trial

Rita Romskaug<sup>1\*</sup> , Espen Molden<sup>2,3</sup>, Jørund Straand<sup>4</sup>, Hege Kersten<sup>2,5,6</sup>, Eva Skovlund<sup>7,8</sup>, Kaisu H Pitkala<sup>9,10</sup> and Torgeir Bruun Wyller<sup>1,11</sup>

## Abstract

**Background:** Polypharmacy and inappropriate drug use is associated with negative health outcomes among older people. Various interventions for improving drug treatment have been evaluated, but the majority of studies are limited by the use of surrogate outcomes or suboptimal design. Thus, the potential for clinically significant improvements from different interventions is still unclear. The main objective of this study is therefore to evaluate the effect upon patient-relevant endpoints of a cooperation between geriatricians and general practitioners on complex drug regimens in home-dwelling elderly people.

**Methods:** This is a cluster randomised, single-blind, controlled trial where general practitioners are invited to participate with patients from their lists. The patients must be 70 years or older, use at least seven different medications and have their medications administered by the home nursing service. We plan to recruit 200 patients, with randomisation at physician level. The intervention consists of three main parts: (1) clinical geriatric assessment of the patient, combined with a thorough review of their medications; (2) a meeting between the geriatrician and general practitioner, where the two physicians combine their competence and knowledge and discuss the drug list systematically; (3) clinical follow-up, depending on the medication changes that have been done. The study period is 24 weeks, and the patients are assessed at baseline, 16 and 24 weeks. The primary outcome measure is health-related quality of life according to the 15D instrument. Secondary outcome measures include physical and cognitive functioning, medication appropriateness, falls, carer burden, use of health services (hospital or nursing home admissions, use of home nursing services) and mortality.

**Discussion:** Our choice of patient-relevant outcome measures will hopefully provide new knowledge on the potential for clinical improvements after performing comprehensive medication reviews in home-dwelling elderly people receiving polypharmacy.

**Trial registration:** ClinicalTrials.gov, NCT02379455. Registered on 27 February 2015.

**Keywords:** Polypharmacy, Inappropriate drug use, Medication review, Geriatrics, Elderly, Home-dwelling

\* Correspondence: ritulf@gmail.com

<sup>1</sup>Department of Geriatric medicine, Institute of Clinical Medicine, University of Oslo, Oslo, Norway

Full list of author information is available at the end of the article



## Background

### Polypharmacy

The drug consumption among older people has increased in the last decades [1] and polypharmacy is frequent [2]. It has been shown that 20% of Norwegians aged 70 plus are prescribed more than ten different drugs annually [3]. In a study of drug consumption among elderly (65 plus) users of home services in eight European countries, 51% used more than six and 22% used more than nine different drugs during a week [4].

A complex clinical situation involving multimorbidity may justify a high number of drugs, and a properly titrated polypharmacy can be beneficial for the individual patient. However, most therapeutic guidelines are based upon research carried out in patients with a limited number of comorbid conditions. Accordingly, such guidelines may be of limited value in frail and multimorbid elderly patients [5, 6]. The more drugs an individual patient consumes, the more demanding is the trade-off between benefits and harms, and the more tightly should the clinical condition be monitored. Polypharmacy increases the risk of adverse drug reactions (ADRs), interactions and other drug-related problems (DRPs), and the risk increases almost linearly with the number of drugs used [7–9]. Several studies among older people indicate that inappropriate drug use is a major reason for poor health and impaired function [10–12], preventable hospital admissions [13–15], and even deaths [16]. A recent Norwegian study reported that of home-dwelling elderly (75 plus) emergency-admitted to hospital, almost 40% were prescribed at least one potentially inappropriate medication (PIM) [17]. DRPs are often caused by overmedication, choice of inappropriate drugs, or inadequate monitoring and follow-up [12]. Underuse of potentially beneficial drugs is probably also a significant problem in the elderly [18, 19].

### Improving prescribing quality

Optimisation of pharmacotherapy should be based on a comprehensive assessment of all relevant medical conditions as well as the patient's functional ability, resources and preferences. However, health services are often organised in a way that makes it difficult to attain a sufficiently good overview of the clinical situation to make good medication reviews in frail and multimorbid patients. Specialists in hospitals mainly see the patient during acute exacerbations of their chronic diseases, and will naturally focus upon drugs relevant for the acute illness – especially drugs relevant for the organ system in which they have specialised. On the other side, general practitioners (GPs) are responsible for the long-term follow-up and repeat prescriptions. Because most GPs attain limited experience in handling complex health states, they may be reluctant to change medications initiated by hospital specialists [20]. Geriatricians are

trained in the management of complex health conditions and polypharmacy and have firm knowledge about age-related changes in physiology and pharmacology [21], but typically see patients over a short period of time, either in an acute geriatric ward or in the geriatric outpatient department. Thus, the geriatrician often has limited information about the patient's medical history, and has a limited possibility to follow the patient over time, elements that are typical strengths in the follow-up made by the GP. Geriatricians and GPs therefore have complementary strengths for managing complex drug regimens in frail elderly patients, and a closer cooperation between these two specialities could be beneficial.

A majority of interventions for improving drug treatment among older people are evaluated by the use of surrogate outcomes such as frequency of DRPs [22], number of prescribed drugs [23], or prevalence of PIMs [24]. Many studies also suffer from suboptimal design, such as observational studies and interventional studies without a control group [25] or without randomisation [26]. A recent Cochrane review [27] concluded that interventions to improve drug therapy appear beneficial in terms of reducing inappropriate prescribing, but the clinical benefits of such reductions are unclear. Interventional studies of measures to facilitate better prescriptions, using a scientifically sound design and at the same time utilising patient-relevant outcomes as well as outcomes capturing the effect upon the families and the health care services, are so far very rare.

### Study objectives

The aim of this study is to evaluate the effect of drug optimisation interventions resulting from a cooperation between geriatricians and GPs on clinically relevant outcome measures in home-dwelling elderly people using complex drug regimens.

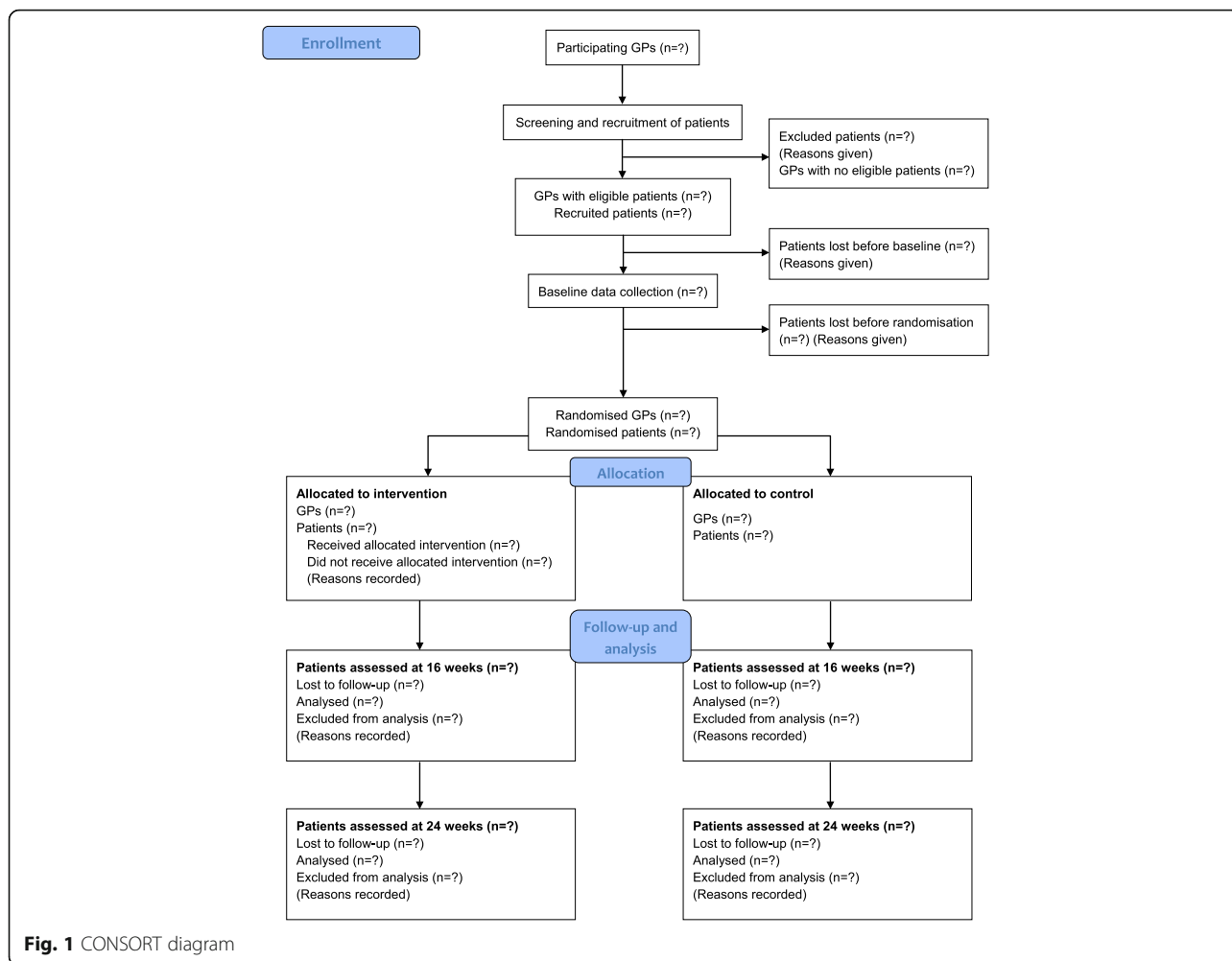
## Methods/design

### Study design

This is a cluster randomised, single-blind, controlled trial with 24 weeks follow-up. GPs are recruited to participate in the study with patients from their lists. In order to avoid “contamination” between intervention and control patients, cluster randomisation on physician level instead of individual randomisation on patient level is performed. The outcomes are assessed at baseline and after 16 and 24 weeks. Patient flow is illustrated in Fig. 1. See Additional file 1 for the Standard Protocol Items: Recommendations for Interventional Trials (SPIRIT) checklist and Additional file 2 for the SPIRIT figure.

### Recruitment of GPs

GPs from the counties of Akershus and Oslo, Norway, are invited to participate in the study. All GPs in these



**Fig. 1** CONSORT diagram

areas are eligible for participation. The GPs receive written invitations, followed by a phone call to clarify if they are interested. When possible, information about the study is also given at GP meetings within each municipality.

**Study population**

We assume that the comprehensive clinical evaluation and medication review that we will test is most relevant for the oldest and most frail patients, with relatively pronounced polypharmacy. We have therefore chosen the following inclusion and exclusion criteria:

**Patient inclusion criteria**

- Listed with one of the participating GPs
- Home-dwelling
- Medications administered by the home nursing service
- Age 70 years or more
- Use of at least seven different systemic medications taken regularly (preparations for inhalation, vitamin

supplements and laxatives are included, but not topical drugs like eye drops and ointments)

- Signed informed consent given by the patient or his/her closest proxy

**Patient exclusion criteria**

- Expected to become permanently institutionalised within 6 months
- Life expectancy judged to be 6 months or less
- Moderate/severe dementia (i.e., Clinical Dementia Rating Scale (CDR) score > 1) and contact with the closest proxy less than once every other week
- Not speaking or understanding Norwegian
- The GP does not want the particular patient to participate (in case of important reasons not covered by the other exclusion criteria)

**Screening and inclusion**

The majority of home-dwelling patients with medications administered by the home nursing service have

their medications prepared by multi-dose packaging systems delivered by a pharmacy. Medication lists from the pharmacy are screened by the home nursing service or by GP office staff to identify patients fulfilling the inclusion criteria. The GPs then consider the eligibility of their patients based on the defined exclusion criteria.

Patients eligible for participation are contacted by the home nursing service or the GP's office, explaining the study and asking whether the researchers may contact them. If this is accepted, the patients receive a home visit from a research assistant who gives complementary oral and written information. Informed written consent is obtained from all participants or from their closest relative in cases where the patient is unable to give a valid consent due to reduced cognitive functioning.

### **Randomisation and blinding**

In order to avoid large variation in cluster sizes, each GP can participate with a maximum of five patients. To assure as equal group sizes as possible, the GPs are stratified based on the number of contributing patients; 1–2 patients versus 3–5. Randomisation is computer-generated and carried out in blocks of unknown and variable size. The allocation sequence is prepared by a statistician not involved in recruitment, and is made available to the researchers in sealed, opaque envelopes. In order to minimise the risk of selection bias, randomisation takes place after inclusion of all patients within each cluster. The GPs are included sequentially according to the capacity in the project. The research assistant, who provides all the assessments, is blinded with respect to allocation. Given the nature of the intervention, it is not feasible to blind the patients, their relatives or the GPs. The effects of the intervention will be analysed blindly, i.e. with the two randomised groups denominated “A” and “B” but without knowledge regarding which group is the control and which the intervention group.

### **Intervention**

Our intervention consists of three main parts: clinical geriatric assessment of the patient combined with a thorough review of their medications; a targeted meeting between the geriatrician and the GP; and clinical follow-up.

#### ***Geriatric assessment and medication review***

The patients receive a home visit by a physician trained in geriatric medicine (RR). In advance, the geriatrician obtains necessary information on the patient's medical history and actual medication from hospital records, the GP's electronic patient record, the home nursing service and other relevant sources. The geriatrician carries out a medical history from the patient (if necessary supplemented by a close relative) and a physical examination, both with focus on conditions most relevant for the

patient's total medication use. Relevant blood analyses and other supplementary tests are ordered if not already available (ECG, haematological tests, electrolytes, renal function, natriuretic peptides, thyroid function, nutritional indicators, serum concentration of relevant drugs, pharmacogenetic testing etc.). The geriatric work-up is aimed at evaluating whether current medications are indicated, whether the relevant conditions are satisfactorily compensated, whether the dosages are appropriate, whether the patient has symptoms of ADRs, and whether drug-drug interactions or drug-disease interactions are present or likely to occur. A drug interaction database [28], lists of anticholinergic drugs [29, 30], the STOPP/START criteria [31] and the NORSEP criteria [32] are also used. The geriatrician is provided with clinical supervision from a senior consultant in geriatric medicine (TBW).

#### ***Meeting between the geriatrician and GP***

The main purpose of this meeting is to combine the competence and knowledge of the geriatrician with that of the GP. The geriatrician summarises the findings from the geriatric assessment and medication review, and the two physicians discuss the patient's drug list systematically. The geriatrician may suggest changes in the drug regimen, but the GP retains the medical responsibility for the patient, and is in charge of all ordinations and medication changes.

#### ***Clinical follow-up***

Depending on medication changes that have been done, the two physicians arrange the necessary follow-up within the project period. The follow-up can consist of a clinical evaluation, further drug adjustments, blood tests etc., and can be carried out by the GP, the geriatrician or through telephone contact with the patient, the relative or the home nursing service, depending on the circumstances.

### **Control group**

The control group receives “usual care” from their GPs during the study period, but the GPs in the control group are offered our assistance in performing medication reviews after the study period is completed.

### **Outcome measures**

Follow-up occurs at 16 and 24 weeks ( $\pm 2$  weeks) after baseline registrations, in order to study the course of any change over time.

#### ***Primary outcome measure***

The primary endpoint is change in health-related quality of life (HRQoL), measured by the 15D instrument (single index version) at 16 weeks. 15D is a generic, 15-dimensional instrument concerning different aspects of

HRQoL [33, 34] that has been used in similar geriatric interventions [35, 36]. The dimensions are mobility, vision, hearing, breathing, sleeping, eating, speech, elimination, usual activities, mental function, discomfort and symptoms, depression, distress, vitality and sexual activity. Each dimension is rated on an ordinal scale with five levels, and the respondent chooses the level best describing his/her present health status. The 15D can be used both as a profile measure and as a single index. The single index, representing the overall HRQoL, varies between 0 (poorest HRQoL) and 1 (excellent HRQoL), and is calculated by using a set of population-based preference or utility weights [33, 37]. Usually, the 15D questionnaire is filled in by the individual whom it concerns, but it is also validated for proxy raters.

We hypothesise that most improvements in the total drug regimen of frail older patients, such as better pain control, better symptom control in heart failure, less parkinsonian side effects, less iatrogenic dehydration or less sedation, have the potential to improve HRQoL. Accordingly, in our opinion 15D is an appropriate outcome measure when the aim is to improve the total drug regimen in an individualised manner across a broad spectrum of drug classes within a heterogeneous group of older users of multiple drugs. The patients included in our study are old, and many are not familiar with self-administration of questionnaires of this kind. 15D is therefore administered by interview. This is done by the research assistant, blind to group allocation. If the patient has a moderate or severe dementia (CDR > 1), and/or the research assistant considers that they do not understand the questionnaire, the interview is carried out with the closest proxy. To account for patients who might lose their ability to respond to 15D during the follow-up period, and in order to compare the answers given by patients themselves and their proxies, we administer 15D to the closest proxy in all cases.

### Secondary outcome measures

Secondary endpoints are on the patient, family and local community level.

1. Patient-related endpoints
  - 15D after 24 weeks
  - Short Physical Performance Battery (SPPB), a simple test of mobility that combines the results of walking speed, chair stand and balance tests [38]
  - Gait speed [39]
  - Hand grip strength (hand dynamometry)
  - Functional Independence Measure (FIM), a measure of physical and cognitive disability [40]
  - Trail Making Test A and B, measuring processing speed, focused and split attention, and executive functioning [41]
- “Digit Span”, a digit repetition test of working memory, measuring attention [42]
- Five Digits Test, measuring attention and executive functions [43]
- Appropriateness of current prescribing as assessed by the Medication Appropriateness Index (MAI) [44] and the Assessment of Underutilization (AOU) [45]
- Number of falls during the follow-up period
- Orthostatic blood pressure
- Weight
- All changes in the pharmacotherapy taking place during the intervention and follow-up period
- Mortality
2. Family-related endpoints
  - Carer burden according to the Relative Stress Scale (RSS) [46]
3. Endpoints related to the local community and use of health services
  - Hospital admissions (with reasons)
  - Number of days the patient has spent in his or her own home (in contrast to being in hospital, nursing home or other institutions)
  - Admission to permanent institutional care
  - Current use of home nursing service (hours per week)

### Background variables

The outcomes are measured at baseline, in order to check and adjust for possible inequalities. In addition, the following descriptive variables are registered:

- Demographic data
- Diagnoses according to ICD-10
- Cumulative Illness Rating Scale (CIRS) [47]
- Clinical Dementia Rating Scale (CDR) [48]
- Course of cognitive symptoms during the last 10 years, according to the Informant Questionnaire on Cognitive Decline in the Elderly (IQCODE) [49]
- Nutritional status, assessed by the Mini Nutritional Assessment Short Form (MNA-SF) [50]
- Current drug use

### Data collection

Background information on diagnoses and comorbidity are obtained from the GP's electronic patient records. The patient receives three home visits from the research assistant; at baseline, 16 and 24 weeks ( $\pm 2$  weeks). These visits take place where the patient is living at that moment; this might be the patient's own home, a nursing facility or a rehabilitation institution. All assessments directly involving the patient are performed at these visits. Proxy information is collected through telephone calls and/or questionnaires sent by mail, if the proxy is

not present at the home visit. Updated drug lists are obtained at all assessment points. The MAI [44] and AOU [45] are assessed by clinical pharmacists and geriatricians not involved in the intervention. The use of home nursing service and admissions to hospital, nursing home or other institutions is registered. In case of hospital admissions, the discharge summary is obtained. See Table 1 for study assessment procedures and timetable.

#### Sample size, statistical power and statistical analysis

The primary endpoint 15D is on an interval scale, and is expected to be reasonably normally distributed. We will analyse this measure by ANCOVA, as recommended by Vickers and Altman [51]. Other outcome measures will be analysed by ANCOVA (continuous data) or logistic regression (categorical data) as appropriate. Non-normally distributed variables will be transformed in order to try to achieve a distribution that is more feasible for analysis. Robust estimation of standard errors will be used to handle within-cluster (physician) correlation. A detailed statistical analysis plan will be developed that will detail imputation processes for missing data etc.

The number of patients in the intervention group is planned to be approximately 100, and each GP can participate with 1–5 patients. This means that the number of GPs (clusters) will be 20–100 in the intervention group. A similar number of patients and GPs will be included in the control group.

It is difficult to make valid assumptions on the correlation between patients within each cluster. In order to estimate the power of the study, we have chosen to estimate power in a worst case (perfect correlation) and a best case (no correlation) scenario. The true correlation is expected to be much closer to the latter, as the potential for intervention will vary between the individual patients. Based on previous studies using 15D, the standard deviation of change over time is expected to be between 0.07 and 0.08 [35, 36, 52]. The minimum important change (MIC) for the change in 15D scores is  $\pm 0.015$  [53]. A change of more than 0.035 in the negative direction represents “much worse HRQoL” and a change of more than 0.035 in the positive direction “much better HRQoL” [53]. Based on previous studies, in addition to a pilot study, we believe that our intervention is extensive enough to potentially improve the patients HRQoL to “much better” ( $>0.035$ ). As can be seen from Table 2, the power to detect a difference of 0.035 will be in the range 59 to 94%, and most probably  $> 80\%$ .

#### Discussion

Polypharmacy and inappropriate drug use constitute a major health risk for elderly patients. On the other side, comorbid conditions and bothersome symptoms may give good reasons to prescribe many drugs. The challenge is to

**Table 1** Study assessment procedures and timetable

	Baseline visit	16 weeks follow-up	24 weeks follow-up
Assessments directly involving the patient			
Demographics, diagnoses, CIRS, MNA-SF	x		
15D	x	x	x
SPPB + gait speed	x	x	x
Hand grip strength	x	x	x
Trail Making Test A + B	x	x	x
Five Digits Test	x	x	x
Digit Span	x	x	x
Falls		x	x
Orthostatic blood pressure	x	x	x
Weight	x	x	x
Assessments of drug use			
Current drug use and changes in pharmacotherapy	x	x	x
MAI	x	x	x
AOU	x	x	x
Assessments based on observation and/or proxy information			
FIM	x	x	x
CDR	x		
Assessments based on information from a close relative			
15D	x	x	x
RSS	x	x	x
IQCODE	x		
Administrative data			
Hospital admissions (with reasons)		x	x
Number of days in own home		x	x
Admission to permanent institutional care		x	x
Use of home nursing service (hours per week)	x	x	x
Mortality		x	x

**Abbreviations:** CIRS Cumulative Illness Rating Scale, MNA-SF Mini Nutritional Assessment Short Form, SPPB Short Physical Performance Battery, MAI Medication Appropriateness Index, AOU Assessment of Underutilization, FIM Functional Independence Measure, CDR Clinical Dementia Rating Scale, RSS Relative Stress Scale, IQCODE Informant Questionnaire on Cognitive Decline in the Elderly

personalise the polypharmacy and to find the best combination of drugs for each individual patient. For this purpose, thorough clinical evaluations and close monitoring of the patient's condition is necessary.

When designing the COOP study, we emphasised examination of real-life scenarios. Our intention is to individualise the treatment, but at the same time to evaluate

**Table 2** Estimation of power in different scenarios

$\Delta$	SD	r	Power %
0.035	0.08	1	59
0.035	0.08	0	87
0.035	0.07	1	71
0.035	0.07	0	94
0.025	0.07	1	43
0.025	0.07	0	71

$\Delta$  change in 15D HRQoL index score, SD standard deviation of change over time in 15D score, R correlation between patients within each cluster

the intervention with stringent scientific methods. In our opinion, the project is innovative in improving cooperation between hospital specialists and the primary health care system and evaluating the effect with patient-related outcome measures.

A majority of previous interventions for improving drug treatment among older adults have been evaluated by the use of surrogate outcomes, such as the number of prescribed drugs [23] or prevalence of PIMs [54], but this does not necessarily indicate whether the patient has really benefited from the intervention. We have chosen patient-relevant outcome measures, and will hopefully be able to contribute with valuable knowledge about clinical effects of comprehensive medication reviews.

There are some limitations to the study. The participants will be old and multimorbid, and prone to experience new illnesses and clinical deterioration during the study period, regardless of the intervention. This might make the intervention less powerful. It is also possible that the GPs who choose to participate are particularly interested in drug treatment in the elderly, and therefore have more knowledge and awareness about this topic than GPs that do not participate. The participating patients might therefore be better followed up beforehand, making it less likely that the intervention will give any effects.

The patients and their relatives are not blinded. There is a risk that the research assistant might be unblinded, even if it is clearly explained to the participants that they should not reveal their group allocation. Nor are the GPs blinded, and the GPs in the control group may pay extra attention to the drug treatment for their patients during the study period, even if they are not provided with advice from the geriatrician.

Since our aim is to address the various comorbidities and clinical problems that are unique for each participating patient, the intervention is not completely standardised. Successful interventions for geriatric patients have often been of a complex type [55–57], whereas the implementation of one single measure will be less likely to give an effect. A major challenge when studying complex interventions is to describe the intervention with sufficient precision as to facilitate replication [57]. Our main

strategy for this will be to compensate for the necessary degree of pragmatism in the interventional approach with a detailed description of the interventions that were in fact carried out, in particular changes in the drug regimens of the individual patients.

This is quite an extensive intervention, but if it is effective, we will argue that it can be carried out for those patients having the most complex polypharmacy – within the existing framework of a geriatric outpatient clinic.

### Trial status

The first patient was included on 17 March 2015. The study is ongoing.

### Additional files

**Additional file 1:** SPRIT 2013 checklist: recommended items to address in a clinical trial protocol. (PDF 58 kb)

**Additional file 2:** SPIRIT figure. (PDF 15 kb)

### Abbreviations

ADRs: Adverse drug reactions; AOU: Assessment of Underutilization; CDR: Clinical Dementia Rating Scale; CIRIS: Cumulative Illness Rating Scale; DRPs: Drug-related problems; FIM: Functional Independence Measure; GP: General practitioner; HRQoL: Health-related quality of life; IQCODE: Informant Questionnaire on Cognitive Decline in the Elderly; MAI: Medication Appropriateness Index; MIC: Minimal important change; MNA-SF: Mini Nutritional Assessment Short Form; PIM: Potentially inappropriate medications; RSS: Relative Stress Scale; SPIRIT: Standard Protocol Items: Recommendations for Interventional Trials; SPPB: Short Physical Performance Battery

### Acknowledgements

Not applicable.

### Funding

The study is funded by the Research Council of Norway (grant number 222033/LAB). The design, management, analysis and reporting of the study are entirely independent of the funding source.

### Availability of data and materials

Not applicable.

### Authors' contribution

TBW and RR initiated the study. TBW, RR, EM, JS, HK, ES and KHP contributed in design and planning of the study and have critically revised the manuscript. ES also provided statistical expertise, and has carried out the randomisation procedure and the sample size calculations. RR is responsible for the daily running of the study and collecting data, and wrote the manuscript. All authors have approved the final manuscript.

### Competing interests

The authors declare that they have no competing interests.

### Consent for publication

Not applicable.

### Ethics approval and consent to participate

The Regional Committee for Medical and Health Research Ethics (REK) has decided that the study is exempt from review in Norway, as it is considered as health service research (REK 2014/1488, 19 August 2014). The study is approved by the Data Protection Official at Oslo University Hospital (reference number 2014/15359), and is carried out in accordance with the Declaration of Helsinki.

The participating GPs are given comprehensive information about the study, and give written consent to participate. Inclusion of patients in the study is based upon informed consent, and information is given written as well as orally. Cognitively intact patients are included on the basis of written, informed consent. Some patients who otherwise fulfil the inclusion criteria may be unable to give a valid consent due to dementia or psychiatric disorders. We regard such patients to be particularly vulnerable to suboptimal pharmacotherapy, and thus particularly important to include in the study. We therefore include such patients based on informed consent from a close relative in combination with assent from the patient. If the patients are able to understand basic information about the project, we use a simplified consent form in combination with fully informed consent from a close relative.

## Publisher's Note

Springer Nature remains neutral with regard to jurisdictional claims in published maps and institutional affiliations.

## Author details

<sup>1</sup>Department of Geriatric medicine, Institute of Clinical Medicine, University of Oslo, Oslo, Norway. <sup>2</sup>School of Pharmacy, University of Oslo, Oslo, Norway. <sup>3</sup>Center for Psychopharmacology, Diakonhjemmet Hospital, Oslo, Norway. <sup>4</sup>Department of General Practice, Institute of Health and Society, University of Oslo, Oslo, Norway. <sup>5</sup>Department of Research and Development, Telemark Hospital Trust, Tønsberg, Norway. <sup>6</sup>Norwegian National Advisory Unit on Ageing and Health, Vestfold Hospital Trust, Tønsberg, Norway. <sup>7</sup>Department of Public Health and General Practice, NTNU, Trondheim, Norway. <sup>8</sup>Mental and Physical Health, Norwegian Institute of Public Health, Oslo, Norway. <sup>9</sup>Department of General Practice, University of Helsinki, Helsinki, Finland. <sup>10</sup>Unit of Primary Health Care, Helsinki University Hospital, Helsinki, Finland. <sup>11</sup>Department of Geriatric Medicine, Oslo University Hospital, Oslo, Norway.

Received: 15 December 2016 Accepted: 14 March 2017

Published online: 04 April 2017

## References

- Hovstadius B, Hovstadius K, Astrand B, Petersson G. Increasing polypharmacy - an individual-based study of the Swedish population 2005-2008. *BMC Clin Pharmacol*. 2010;10:16.
- Jyrkka J, Vartiainen L, Hartikainen S, Sulkava R, Enlund H. Increasing use of medicines in elderly persons: a five-year follow-up of the Kuopio 75 + Study. *Eur J Clin Pharmacol*. 2006;62:151-8.
- Nyborg G, Straand J, Brekke M. Inappropriate prescribing for the elderly—a modern epidemic? *Eur J Clin Pharmacol*. 2012;68:1085-94.
- Fialova D, Topinkova E, Gambassi G, Finne-Soveri H, Jonsson PV, Carpenter I, et al. Potentially inappropriate medication use among elderly home care patients in Europe. *JAMA*. 2005;293:1348-58.
- Boyd CM, Darer J, Boult C, Fried LP, Boult L, Wu AW. Clinical practice guidelines and quality of care for older patients with multiple comorbid diseases: implications for pay for performance. *JAMA*. 2005; 294:716-24.
- Tinetti ME, Bogardus Jr ST, Agostini JV. Potential pitfalls of disease-specific guidelines for patients with multiple conditions. *N Engl J Med*. 2004;351:2870-4.
- Blix HS, Viktil KK, Reikvam A, Moger TA, Hjemmas BJ, Pretsch P, et al. The majority of hospitalised patients have drug-related problems: results from a prospective study in general hospitals. *Eur J Clin Pharmacol*. 2004;60:651-8.
- Viktil KK, Blix HS, Moger TA, Reikvam A. Polypharmacy as commonly defined is an indicator of limited value in the assessment of drug-related problems. *Br J Clin Pharmacol*. 2007;63:187-95.
- Cardenas-Valladolid J, Martin-Madrado C, Salinero-Fort MA, Carrillo de-Santa Pau E, Abanades-Herranz JC, de Burgos-Lunar C, et al. Prevalence of adherence to treatment in homebound elderly people in primary health care: a descriptive, cross-sectional, multicentre study. *Drugs Aging*. 2010;27: 641-51.
- Gallagher P, Barry P, O'Mahony D. Inappropriate prescribing in the elderly. *J Clin Pharm Ther*. 2007;32:113-21.
- Lin HY, Liao CC, Cheng SH, Wang PC, Hsueh YS. Association of potentially inappropriate medication use with adverse outcomes in ambulatory elderly patients with chronic diseases: experience in a Taiwanese medical setting. *Drugs Aging*. 2008;25:49-59.
- Steinman MA, Handler SM, Gurwitz JH, Schiff GD, Covinsky KE. Beyond the prescription: medication monitoring and adverse drug events in older adults. *J Am Geriatr Soc*. 2011;59:1513-20.
- Mannesse CK, Derckx FH, de Ridder MA, Man in 't Veld AJ, van der Cammen TJ. Contribution of adverse drug reactions to hospital admission of older patients. *Age Ageing*. 2000;29:35-9.
- Budnitz DS, Shehab N, Kegler SR, Richards CL. Medication use leading to emergency department visits for adverse drug events in older adults. *Ann Intern Med*. 2007;147:755-65.
- Marcum ZA, Amuan ME, Hanlon JT, Aspinall SL, Handler SM, Ruby CM, et al. Prevalence of unplanned hospitalizations caused by adverse drug reactions in older veterans. *J Am Geriatr Soc*. 2012;60:34-41.
- Ebbesen J, Buajordet I, Erikssen J, Brors O, Hillberg T, Svaar H, et al. Drug-related deaths in a department of internal medicine. *Arch Intern Med*. 2001;161:2317-23.
- Kersten H, Hvidsten LT, Gloersen G, Wyller TB, Wang-Hansen MS. Clinical impact of potentially inappropriate medications during hospitalization of acutely ill older patients with multimorbidity. *Scand J Prim Health Care*. 2015;33:243-51.
- Ruths S, Straand J, Nygaard HA, Hodneland F. Drug treatment of heart failure—do nursing-home residents deserve better? *Scand J Prim Health Care*. 2000;18:226-31.
- Marcum ZA, Pugh MJ, Amuan ME, Aspinall SL, Handler SM, Ruby CM, et al. Prevalence of potentially preventable unplanned hospitalizations caused by therapeutic failures and adverse drug withdrawal events among older veterans. *J Gerontol A Biol Sci Med Sci*. 2012;67:867-74.
- Fried TR, Tinetti ME, Iannone L. Primary care clinicians' experiences with treatment decision making for older persons with multiple conditions. *Arch Intern Med*. 2011;171:75-80.
- Salvedt I, Spigset O, Ruths S, Fayers P, Kaasa S, Sletvold O. Patterns of drug prescription in a geriatric evaluation and management unit as compared with the general medical wards: a randomised study. *Eur J Clin Pharmacol*. 2005;61:921-8.
- Milton JC, Hill-Smith I, Jackson SH. Prescribing for older people. *BMJ*. 2008; 336:606-9.
- Garfinkel D, Mangin D. Feasibility study of a systematic approach for discontinuation of multiple medications in older adults: addressing polypharmacy. *Arch Intern Med*. 2010;170:1648-54.
- Gallagher PF, O'Connor MN, O'Mahony D. Prevention of potentially inappropriate prescribing for elderly patients: a randomized controlled trial using STOPP/START criteria. *Clin Pharmacol Ther*. 2011;89:845-54.
- Kaur S, Mitchell G, Vitetta L, Roberts MS. Interventions that can reduce inappropriate prescribing in the elderly: a systematic review. *Drugs Aging*. 2009;26:1013-28.
- Garfinkel D, Zur-Gil S, Ben-Israel J. The war against polypharmacy: a new cost-effective geriatric-palliative approach for improving drug therapy in disabled elderly people. *Isr Med Assoc J*. 2007;9:430-4.
- Patterson SM, Cadogan CA, Kerse N, Cardwell CR, Bradley MC, Ryan C, et al. Interventions to improve the appropriate use of polypharmacy for older people. *Cochrane Database Syst Rev*. 2014;10:CD008165.
- Drug Interaction Database. <http://www.interaksjoner.no>. Accessed 28 Mar 2017.
- American Geriatrics Society Beers Criteria Update Expert Panel. American Geriatrics Society updated Beers Criteria for potentially inappropriate medication use in older adults. *J Am Geriatr Soc*. 2012;60:616-31.
- Duran CE, Azermai M, Vander Stichele RH. Systematic review of anticholinergic risk scales in older adults. *Eur J Clin Pharmacol*. 2013;69:1485-96.
- O'Mahony D, O'Sullivan D, Byrne S, O'Connor MN, Ryan C, Gallagher P. STOPP/START criteria for potentially inappropriate prescribing in older people: version 2. *Age Ageing*. 2015;44:213-8.
- Rognstad S, Brekke M, Fetveit A, Spigset O, Wyller TB, Straand J. The Norwegian General Practice (NORGE) criteria for assessing potentially inappropriate prescriptions to elderly patients. A modified Delphi study. *Scand J Prim Health Care*. 2009;27:153-9.
- Sintonen H. The 15D instrument of health-related quality of life: properties and applications. *Ann Med*. 2001;33:328-36.
- Sintonen H. The 15-D Measure of Health Related Quality of Life: Reliability, Validity and Sensitivity of its Health State Descriptive System. Working Paper 41. National Centre for Health Program Evaluation, Melbourne. 1994. [http://business.monash.edu/\\_\\_\\_data/assets/pdf\\_file/0009/391374/wp41-1.pdf](http://business.monash.edu/___data/assets/pdf_file/0009/391374/wp41-1.pdf). Accessed 28 Mar 2017.
- Pitkala KH, Laurila JV, Strandberg TE, Kautiainen H, Sintonen H, Tilvis RS. Multicomponent geriatric intervention for elderly inpatients with delirium:



- effects on costs and health-related quality of life. *J Gerontol A Biol Sci Med Sci*. 2008;63:56–61.
36. Pitkala KH, Juola AL, Kautiainen H, Soini H, Finne-Soveri UH, Bell JS, et al. Education to reduce potentially harmful medication use among residents of assisted living facilities: a randomized controlled trial. *J Am Med Dir Assoc*. 2014;15:892–8.
  37. Sintonen H. The 15-D Measure of Health Related Quality of Life. II Feasibility, Reliability and Validity of its Valuation System. Working Paper 42. National Centre for Health Program Evaluation, Melbourne. 1995. [http://business.monash.edu/\\_\\_data/assets/pdf\\_file/0003/391422/wp42.pdf](http://business.monash.edu/__data/assets/pdf_file/0003/391422/wp42.pdf). Accessed 28 Mar 2017.
  38. Guralnik JM, Ferrucci L, Pieper CF, Leveille SG, Markides KS, Ostir GV, et al. Lower extremity function and subsequent disability: consistency across studies, predictive models, and value of gait speed alone compared with the short physical performance battery. *J Gerontol A Biol Sci Med Sci*. 2000;55:M221–231.
  39. Studenski S. Bradypedia: is gait speed ready for clinical use? *J Nutr Health Aging*. 2009;13:878–80.
  40. Pollak N, Rheault W, Stoecker JL. Reliability and validity of the FIM for persons aged 80 years and above from a multilevel continuing care retirement community. *Arch Phys Med Rehabil*. 1996;77:1056–61.
  41. Reitan RM. Validity of the trail making test as an indicator of organic brain damage. *Percept Mot Skills*. 1958;8:271–6.
  42. Randolph C, Tierney MC, Mohr E, Chase TN. The Repeatable Battery for the Assessment of Neuropsychological Status (RBANS): preliminary clinical validity. *J Clin Exp Neuropsychol*. 1998;20:310–9.
  43. Sedó M. FDT - Test de los Cinco Digitos. Madrid: TEA Ediciones; 2007.
  44. Hanlon JT, Schmadre KE, Samsa GP, Weinberger M, Uttech KM, Lewis IK, et al. A method for assessing drug therapy appropriateness. *J Clin Epidemiol*. 1992;45:1045–51.
  45. Jeffery S, Ruby CM, Twersky J, Hanlon JT. Effect of an interdisciplinary team on suboptimal prescribing in a long term care facility. *Consult Pharm*. 1999;14:1386–91.
  46. Greene JG, Smith R, Gardiner M, Timbury GC. Measuring behavioural disturbance of elderly demented patients in the community and its effects on relatives: a factor analytic study. *Age Ageing*. 1982;11:121–6.
  47. Salvi F, Miller MD, Grilli A, Giorgi R, Towers AL, Morichi V, et al. A manual of guidelines to score the modified cumulative illness rating scale and its validation in acute hospitalized elderly patients. *J Am Geriatr Soc*. 2008;56:1926–31.
  48. Hughes CP, Berg L, Danziger WL, Coben LA, Martin RL. A new clinical scale for the staging of dementia. *Br J Psychiatry*. 1982;140:566–72.
  49. Jorm AF. A short form of the Informant Questionnaire on Cognitive Decline in the Elderly (IQCODE): development and cross-validation. *Psychol Med*. 1994;24:145–53.
  50. Kaiser MJ, Bauer JM, Ramsch C, Uter W, Guigoz Y, Cederholm T, et al. Validation of the Mini Nutritional Assessment short-form (MNA-SF): a practical tool for identification of nutritional status. *J Nutr Health Aging*. 2009;13:782–8.
  51. Vickers AJ, Altman DG. Statistics notes: analysing controlled trials with baseline and follow up measurements. *BMJ*. 2001;323:1123–4.
  52. Pitkala KH, Routasalo P, Kautiainen H, Sintonen H, Tilvis RS. Effects of socially stimulating group intervention on lonely, older people's cognition: a randomized, controlled trial. *Am J Geriatr Psychiatry*. 2011;19:654–63.
  53. Alanne S, Roine RP, Rasanen P, Vainiola T, Sintonen H. Estimating the minimum important change in the 15D scores. *Qual Life Res*. 2015;24:599–606.
  54. Gallagher P, Lang PO, Cherubini A, Topinkova E, Cruz-Jentoft A, Montero Errasquin B, et al. Prevalence of potentially inappropriate prescribing in an acutely ill population of older patients admitted to six European hospitals. *Eur J Clin Pharmacol*. 2011;67:1175–88.
  55. Saltvedt I, Mo ES, Fayers P, Kaasa S, Sletvold O. Reduced mortality in treating acutely sick, frail older patients in a geriatric evaluation and management unit. A prospective randomized trial. *J Am Geriatr Soc*. 2002;50:792–8.
  56. Ellis G, Langhorne P. Comprehensive geriatric assessment for older hospital patients. *Br Med Bull*. 2004;71:45–59.
  57. Craig P, Dieppe P, Macintyre S, Michie S, Nazareth I, Petticrew M. Developing and evaluating complex interventions: new guidance. London: Medical Research Council; 2008.

Submit your next manuscript to BioMed Central  
and we will help you at every step:

- We accept pre-submission inquiries
- Our selector tool helps you to find the most relevant journal
- We provide round the clock customer support
- Convenient online submission
- Thorough peer review
- Inclusion in PubMed and all major indexing services
- Maximum visibility for your research

Submit your manuscript at  
[www.biomedcentral.com/submit](http://www.biomedcentral.com/submit)

