

**Epigenetic DNA methylation changes associated with
headache chronification: A retrospective case-control study**

Journal:	<i>Cephalalgia</i>
Manuscript ID	Draft
Manuscript Type:	Original Article
Date Submitted by the Author:	n/a
Complete List of Authors:	Winsvold, Bendik; Oslo University Hospital, FORMI and Department of Neurology; University of Oslo, Institute of Clinical Medicine Palta, Priit; University of Helsinki, Institute for Molecular Medicine Finland (FIMM); University of Tartu, Estonian Genome Center Eising, Else; Leiden University Medical Centre, Department of Human Genetics Page, Christian; University of Oslo, Institute of Clinical Medicine; Norwegian Institute of Public Health, Norwegian Institute of Public Health M. J. M. van den Maagdenberg, Arn ; Leids Universitair Medisch Centrum, Department of Neurology and Department of Human Genetics Palotie, Aarno; University of Helsinki, Institute for Molecular Medicine Finland (FIMM); Massachusetts General Hospital and Harvard Medical School, Psychiatric and Neurodevelopmental Genetics Unit, Analytic and Translational Genetics Unit and Department of Neurology; Broad Institute of MIT and Harvard, Medical and Population Genetics Program and Stanley Center for Psychiatric Research Zwart, John-Anker; Oslo University Hospital, FORMI and Department of Neurology; University of Oslo, Institute of Clinical Medicine
Key Words:	chronic headache, epigenetics, cohort studies

1
2
3
4 **Epigenetic DNA methylation changes associated with headache**
5
6
7 **chronification: A retrospective case-control study**
8
9
10

11
12
13 Bendik S. Winsvold^{1,2*}, Priit Palta^{3,4*}, Else Eising^{5*}, Christian M. Page^{2,6*}, *The*
14
15 *International Headache Genetics Consortium*, Arn M. J. M. van den Maagdenberg^{5,7},
16
17 Aarno Palotie^{3, 8-12}, John-Anker Zwart^{1,2}
18
19

20
21
22 1 FORMI and Department of Neurology, Oslo University Hospital, PO Box 4956 Nydalen, 0424 Oslo,
23
24 Norway.

25
26 2 Institute of Clinical Medicine, University of Oslo, 0316, Oslo, Norway

27
28 3 Institute for Molecular Medicine Finland (FIMM), University of Helsinki, Tukholmankatu 8,
29
30 Helsinki, Finland.

31
32 4 Estonian Genome Center, University of Tartu, Tartu, Estonia

33
34 5 Department of Human Genetics, Leiden University Medical Center, Leiden, The Netherlands

35
36 6 Norwegian Institute of Public Health, PO Box 4404 Nydalen, 0403 Oslo, Norway.

37
38 7 Department of Neurology, Leiden University Medical Center, Leiden, The Netherlands

39
40 8 Psychiatric and Neurodevelopmental Genetics Unit, Massachusetts General Hospital and Harvard
41
42 Medical School, Boston, USA.

43
44 9 Medical and Population Genetics Program, Broad Institute of MIT and Harvard, Cambridge, USA.

45
46 10 Stanley Center for Psychiatric Research, Broad Institute of MIT and Harvard, Cambridge, USA.

47
48 11 Analytic and Translational Genetics Unit, Massachusetts General Hospital and Harvard Medical
49
50 School,

51
52 12 Department of Neurology, Massachusetts General Hospital, Boston, USA

53
54 * The authors contributed equally to this work.
55
56
57
58
59
60

1
2
3 **Supplemental Information:** Supplemental Methods; Supplemental Figure 1;
4
5 Supplemental Table 1.
6
7

8
9
10 **Correspondence should be addressed to:**

11 Bendik S. Winsvold, Department of Neurology, Oslo University Hospital, Pb 4956

12
13 Nydalen, 0424 Oslo, Norway

14
15 Tel: +47 97604500

16
17 email: bendik.s.winsvold@gmail.com
18
19

20
21
22
23 **Abstract**

24
25 *Background:* The biological mechanisms of headache chronification are poorly
26
27 understood. We aimed to identify changes in DNA methylation associated with the
28
29 transformation from episodic to chronic headache.
30
31

32
33
34 *Methods:* Participants were recruited from the population-based Norwegian HUNT-
35
36 Study. Thirty-six female headache patients who transformed from episodic to chronic
37
38 headache between baseline and follow-up 11 years later were matched against 35
39
40 controls with episodic headache. DNA methylation was quantified at 485,000 CpG
41
42 sites, and changes in methylation level at these sites were compared between cases
43
44 and controls by linear regression analysis. Data were analyzed in two stages (Stages 1
45
46 and 2) and in a combined meta-analysis.
47
48

49
50
51 *Results:* None of the top 20 CpG sites identified in Stage 1 replicated in Stage 2 after
52
53 multiple testing correction. In the combined meta-analysis the strongest associated
54
55 CpG sites were related to *SH2D5* and *NPTX2*, two brain-expressed genes involved in
56
57
58
59
60

1
2
3 the regulation of synaptic plasticity. Functional enrichment analysis pointed to
4
5 processes including calcium ion binding and estrogen receptor pathways.
6
7

8
9
10 *Conclusion:* In this first genome-wide study of DNA methylation in headache
11
12 chronification several potentially implicated loci and processes were identified. The
13
14 study exemplifies the use of prospectively collected population cohorts to search for
15
16 epigenetic mechanisms of disease.
17

18
19
20
21 **Key words:** chronic headache; epigenetics; cohort studies
22
23
24
25
26
27
28
29
30
31
32
33
34
35
36
37
38
39
40
41
42
43
44
45
46
47
48
49
50
51
52
53
54
55
56
57
58
59
60

Introduction

In a number of patients who suffer from episodic headache attacks, their headache transforms into a chronic form (1, 2). Chronic headache, defined as headache occurring on at least 15 days per month, affects 3-5% of the general population and 40% of patients in headache clinics, and is associated with severe disability and impaired quality of life (1, 3). Approximately half of these patients have chronic migraine (1). Established risk factors for headache chronification include the overuse of acute headache medications and a high baseline attack frequency (4). The biological mechanisms involved in the transition from episodic to chronic headache are however unknown.

In recent years it has become evident that epigenetic processes play an important role in a range of multifactorial diseases (5). Epigenetics entail changes in gene expression that are not due to variation in the DNA sequence. A main epigenetic mechanism is DNA methylation, the covalent addition of a methyl group to the 5th carbon of cytosine residues, which is typically associated with gene silencing (5, 6). Epigenetic modifications can be stably inherited through cell divisions but can also be dynamic. They enable cell and developmental stage-specific regulation of gene expression, and play an important role in programming lasting responses to environmental cues (6, 7). Due to the ability of DNA methylation changes to shift a biological system from one stable state to another, their implication in headache chronification is of particular interest. It has been hypothesized that frequent headache attacks may lower the threshold for subsequent headache attacks through epigenetic mechanisms resulting in a feed-forward loop (6). Similarly, psychological stress and female sex hormones,

1
2
3 which have been implicated in migraine genesis, are known to exert their
4
5 physiological effects partly through epigenetic mechanisms (6, 8).
6
7

8
9
10 In this study, subjects were recruited from the Norwegian population-based Nord-
11 Trøndelag Health (HUNT) Study, where they gave blood samples and were assessed
12 for headache at two time points 11 years apart. In order to identify changes in DNA
13 methylation associated with headache chronification we compared cases, who
14 transformed from episodic to chronic headache during the follow-up period, with
15 controls who did not develop chronic headache. For all selected subjects, genome-
16 wide DNA methylation levels were characterized at baseline and follow-up.
17
18
19
20
21
22
23
24
25
26

27 **Materials and Methods**

28 *Participants*

29
30
31 In the HUNT2 (1995–1997) and HUNT3 (2006–2008) studies, the entire population
32 of the Norwegian county of Nord-Trøndelag, 20 years of age or older, was invited to
33 complete extensive questionnaires concerning health-related issues, participate in a
34 clinical examination and donate blood samples. Among 92,566 individuals in HUNT2
35 and 94,194 in HUNT3 invited to participate, 51,383 (56%) and 39,701 (42%),
36 respectively, answered the headache questionnaire (9, 10).
37
38
39
40
41
42
43
44
45
46
47

48 The headache classification used in this study has been described in detail elsewhere
49 (9-11). Briefly, in each survey those who answered 'yes' to the screening question
50 'Have you suffered from headache during the last year?' were defined as headache
51 sufferers and asked to fill in the other headache questions. Participants indicated the
52 number of days with headache per month, with the options < 7, 7-14 or > 14
53
54
55
56
57
58
59
60

1
2
3 days/month in HUNT2 and the options < 1, 1-6, 7-14 or > 14 days/month in HUNT3.

4
5 Chronic daily headache (CDH) was defined as headache occurring on ≥ 15

6
7 days/month. In HUNT2, acute medication overuse was defined as 'analgesic use daily
8
9 or almost daily for ≥ 1 month during the last 12 months', and in HUNT3 as 'over-the-
10
11 counter-medication use for headache ≥ 4 days/week during the last month'.

12
13 Medication-overuse headache was defined as the combination of CDH and acute
14
15 medication overuse (9, 11, 12). This headache classification has been validated by
16
17 interview diagnoses (9, 10). In HUNT2, the sensitivity and specificity were,
18
19 respectively 85% and 83% for headache suffering (Cohen's kappa $\kappa = 0.57$), and 91%
20
21 and 56% for headache frequency < 7 days per month ($\kappa = 0.50$). In HUNT3, the
22
23 sensitivity and specificity were, respectively 88% and 86% for headache suffering (κ
24
25 = 0.70), 69% and 99% for CDH ($\kappa = 0.75$) and 75% and 100% for medication-
26
27 overuse headache ($\kappa = 0.75$).
28
29
30
31
32
33

34 Cases for the current study were selected among participating women who at the time
35
36 of HUNT2 (baseline) were ≤ 35 years of age and reported headache on < 7
37
38 days/month, and at the time of HUNT3 (follow-up) reported ≥ 15 headache
39
40 days/month (CDH). To avoid sample heterogeneity resulting from different DNA
41
42 methylation patterns in men and women, only women were included. Likewise, to
43
44 avoid DNA methylation changes resulting from the onset of menopause during
45
46 follow-up only women ≤ 35 years of age at baseline were included. In total 43
47
48 subjects fulfilled these criteria. After excluding samples with missing DNA from
49
50 either baseline or follow-up, 40 cases were included in the study. We selected an
51
52 equal number of controls, who were matched with cases on their headache frequency
53
54 and age at baseline, but at follow-up either did not have headache anymore or had
55
56
57
58
59
60

1
2
3 headache on < 7 days/month. Average time between baseline and follow-up
4
5 examinations was 11.4 years (range 10-12.6 years).
6
7

8 *Ethics*

9
10 Signed informed consent was obtained from all participants in the HUNT2 and
11
12 HUNT3 surveys, and the present study was approved by the Regional Committee for
13
14 Medical Research Ethics (2012/2316/REK midt).
15
16

17 *Genome-wide quantification of DNA methylation*

18
19 A detailed description of sample handling, quantification of DNA methylation, data
20
21 normalization and quality control is given in **Supplemental Methods**. Briefly, we
22
23 performed array quantification of DNA methylation on genomic DNA isolated from
24
25 leukocytes, after bisulfite conversion, using the Illumina Infinium
26
27 HumanMethylation450 BeadChip (Illumina, San Diego, CA, USA). For Stage 1, 96
28
29 samples from 24 cases and 24 controls were analyzed. For Stage 2, 64 samples from
30
31 16 cases and 16 controls were analyzed. The methylation level at each CpG site for
32
33 each sample was calculated as a β -value, scaling from 0 (not methylated) to 1 (fully
34
35 methylated). After sample-wise quality control steps, 36 cases and 35 controls
36
37 contributed to the final analysis. An overview of the study design and participants in
38
39 the final analysis are given in **Figure 1**. After marker-wise quality control steps, out
40
41 of 485,775 CpG markers initially interrogated 431,282 and 436,517 markers were
42
43 available for analysis in Stage 1 and Stage 2, respectively.
44
45
46
47
48
49
50
51
52
53
54
55
56
57
58
59
60

Analytic approach

Baseline characteristics

Baseline characteristics were compared between cases and controls by Fisher's exact test (for binary variables) or independent samples *t*-test (for continuous variables).

The examined variables included known or suggested risk factors for the development of chronic daily headache (4, 13); age (continuous); low educational level (upper secondary school or less as highest education); self-reported daily use of tranquilizers last year (yes, no); current daily smoking (yes, no); low physical activity (< 1 hour light exercise per week); body-mass index (continuous); Hospital Anxiety and Depression Scale (HADS) for each of anxiety and depression (continuous) (14), chronic musculoskeletal complaints (yes, no) (15); gastrointestinal complaints (yes, no) (16), self-reported diabetes mellitus (yes, no) and self-reported rheumatoid or osteoarthritis (yes, no). Of the participants included in the study, 3 had missing information on physical activity and 1 on chronic musculoskeletal complaints.

Association analysis and replication

The effect of headache chronification (case-control status) was modeled on changes in DNA methylation levels. For each individual, normalized methylation level estimate (β -value) at baseline was subtracted from methylation level estimate at follow-up for each CpG site. Resulting methylation level changes at each CpG site were then compared between cases and controls using linear regression model adjusted for age, using the *lm* package in R software (17). Data from each stage was analyzed separately and the 20 CpG sites showing strongest association with chronification in Stage 1 were taken forward for replication in Stage 2. A Bonferroni-corrected *p*-value threshold ($0.05/20 = 0.0025$) was used to consider statistically significant replication.

Meta-analysis

Subsequently, a fixed-effects meta-analysis was performed on DNA methylation data from Stage 1 and Stage 2, weighted by the inverse variance, using the GWAMA software (18). In total 436,549 CpG markers were present in either stage after quality control and could be used in the analysis, resulting in a Bonferroni-corrected p-value threshold of 1.15×10^{-7} ($0.05/436,549$).

Characterization of top-ranking CpG sites

Functional profiling of the meta-analysis top-ranking CpG sites was carried out using g:Profiler web-based software (19), see **Supplemental Methods** for a full description.

Briefly, g:Profiler performs a statistical gene set enrichment analysis to find functional gene groups or biological pathways that are significantly over-represented in user-provided input. The results presented are based on the 200 top-ranking CpG sites from the meta-analysis, and results were considered significant if the multiple testing corrected p-value for the enriched group or pathway was ≤ 0.05 .

Characterization of gene expression in various human tissues was retrieved from the GTEx database (20). Although DNA methylation is largely tissue-specific, inter-individual variation in DNA methylation has been shown to correlate between blood and brain for a subset of CpG sites (21). Correlation of DNA methylation levels between blood and brain at the top CpG sites was analyzed using the Blood Brain DNA Methylation Comparison tool (<http://epigenetics.essex.ac.uk/bloodbrain>) that utilizes DNA methylation data of blood and four different brain regions from matched samples (21).

Analysis of medication overuse

Overuse of acute headache medications is a known risk factor for headache chronification. To evaluate to what extent medication overuse influenced the identified associations, the association analysis and meta-analysis was repeated stratified by medication overuse. Cases with or without medication overuse at follow-up were analyzed separately against all controls. Results were visualized as forest plots using the *metafor* R package (version 1.9-8) (22). Additionally, unsupervised clustering of the samples was performed using the *hclust* R package, based on their methylation levels at follow-up at each of the 200 top-ranking CpG sites from the initial meta-analysis.

Results

Demographic variables and potential risk factors for CDH did not differ between cases and controls at baseline (**Table 1**). However, four participants reported medication overuse at baseline, and all four later developed CDH. Likewise no difference between cases and controls was found for the listed variables when Stage 1 and Stage 2 were analyzed separately (data not shown). Average time between baseline and follow-up examinations was 11.4 years (range 10-12.6 years). At the time of follow-up 17 of 36 cases (47%) and 0 of 35 controls reported overuse of acute headache medication.

The 20 CpG sites that demonstrated the strongest association with headache chronification in Stage 1 are listed in **Table 2**. Using the Bonferroni-corrected statistical significance level of 0.0025, none of these CpG sites reached statistical significance for replication in Stage 2. When data from the two stages were combined

1
2
3 in a fixed-effects meta-analysis, no CpG sites reached the multiple-testing corrected
4 study-wide significance threshold of 1.15×10^{-7} . The most strongly associated CpG
5 marker was cg01010870 (p-value = 6.17×10^{-6}), located near the transcription start
6 site of the gene *SH2D5* (**Table 3**) that is highly expressed in various regions of the
7 human brain (**Supplemental Figure 1**). The second most strongly associated CpG
8 marker cg11086695 (p-value = 6.95×10^{-6}) is intergenic, located 76 kb downstream
9 from *NPTX2* and 141 kb downstream from *TMEM130*. For 6 of the top 10 CpG
10 markers (**Table 3**), methylation levels in blood showed high correlation with
11 methylation levels in one or several regions of the human brain at p-value < 0.05 (21),
12 exemplified for the most significantly associated CpG site (cg01010870) in **Figure 2**.
13
14
15
16
17
18
19
20
21
22
23
24
25
26

27 Genomic regions corresponding to the 200 top-ranking CpG sites from the meta-
28 analysis were significantly enriched for genes belonging to specific biological
29 functions (**Table 4, Supplemental Table 1**). Statistically strongest enrichment was
30 observed for "calcium ion binding" (p-value = 1.21×10^{-5}), followed by "biological
31 adhesion" (p-value = 4.23×10^{-5}), "intracellular estrogen receptor signaling" (p-value
32 = 0.02), and "negative regulation of homotypic cell-cell adhesion" (p-value = 0.04).
33
34
35
36
37
38
39
40
41
42

43 When stratifying the meta-analysis for overuse of acute headache medications among
44 cases, the associations for the 10 top-ranking CpG sites from the initial meta-analysis
45 had the same direction and were of comparable strength in each of the two groups
46 (**Figure 3**). Likewise, unbiased hierarchical cluster analysis based on the 200 top-
47 ranking CpG sites did not discriminate between cases with and without medication
48 overuse (**Figure 4**).
49
50
51
52
53
54
55
56
57
58
59
60

Discussion

This is, to our knowledge, the first study of epigenetic changes in headache chronification. Using a retrospective case-control design, DNA methylation changes were examined across the genome comparing patients who converted from episodic to chronic headache during a 11 year follow-up period with matched controls. In the discovery stage several CpG sites showed suggestive association to headache chronification, but these failed to replicate in the second stage. Combining association results from both stages in a fixed-effects meta-analysis we identified CpG sites that may point to genes involved in headache chronification. An enrichment was found for genes related to calcium ion binding, biological adhesion, and intracellular estrogen receptor signaling.

Since cases in this study reported episodic headache at baseline and CDH at the time of follow-up, it is likely that they represent *transformed* rather than *de-novo* chronic headache. A limitation is however that the questionnaire-based assessment did not allow distinction of chronic migraine from other types of chronic headache. Previous epidemiological studies suggest that approximately half of those with CDH fulfill criteria for chronic migraine (1), making it likely that migraineurs contribute substantially to our case group.

Medication overuse is a major risk factor for headache chronification, and it has previously been shown that medication overuse headache accounts for about half of the participants who report CDH in the HUNT population (13). A similar proportion was seen in this study with 17 of 36 cases (47%), but none of the controls, reporting medication overuse at the time of follow-up. Notably, all 4 participants who reported

1
2
3 medication overuse at baseline had developed chronic headache at follow-up. Given
4
5 our design, it is feasible that at least some of the DNA methylation changes result
6
7 from medication use. Still, when stratifying the meta-analysis results by cases with
8
9 and without medication overuse, the strength and direction of association for the top
10
11 10 loci from the meta-analysis were similar between the groups (**Figure 3**). Also,
12
13 unsupervised hierarchical clustering of the samples based on methylation levels for
14
15 the top 200 CpG sites did not discriminate cases with from cases without medication
16
17 overuse (**Figure 4**). The results therefore suggest that medication overuse is unlikely
18
19 to explain the identified associations.
20
21

22
23
24
25 The most significant CpG site is at the *SH2D5* gene, which encodes the SH2 Domain
26
27 Containing 5 protein. The second strongest associated CpG site is 76 kb downstream
28
29 from the nearest gene *NPTX2*, which encodes the Neuronal Pentraxin II protein. Both
30
31 proteins are highly expressed in adult human brain (23, 24) (**Supplemental Figure 1**),
32
33 and DNA methylation levels at the associated CpG sites are highly correlated between
34
35 brain and blood (**Table 3 and Figure 2**). Both proteins have presumed roles in
36
37 regulating synaptic plasticity. The SH2 Domain Containing 5 protein regulates
38
39 synaptic plasticity through the control of Rac-GTP levels (25). Neuronal Pentraxin II
40
41 regulates synaptic plasticity by acting as an inhibitor of excitatory synapses, through
42
43 binding and clustering of glutamatergic AMPA receptors. Neuronal Pentraxin II is
44
45 induced by neuronal activity, and has an assumed function in rebalancing excitation-
46
47 inhibition after periods of increased synaptic activity (23). Of interest, another of the
48
49 top associated CpG markers is related to glutamate signaling. *GRID2* encodes the
50
51 glutamate receptor $\delta 2$, an ionotropic glutamate receptor which is expressed in several
52
53 brain regions, with highest expression in the cerebellum (20, 26). Epigenetic
54
55
56
57
58
59
60

1
2
3 alteration of synaptic plasticity has been previously hypothesized as a possible
4
5 mechanism of migraine chronification (6). Support for this comes from the
6
7 experimental finding that synchronous neuronal activity, which also occurs in cortical
8
9 spreading depression of the migraine aura (27), results in DNA methylation changes
10
11 in brain-specific genes related to neuronal plasticity (28). One may envisage that as
12
13 neuronal activity can cause epigenetic changes altering synaptic plasticity, migraine
14
15 attacks in a feed-forward loop may promote subsequent migraine attacks leading to
16
17 chronification. Our findings seem to provide at least some support for a role of
18
19 synaptic plasticity in headache chronification. Regardless, it is far from clear whether
20
21 such changes are a cause or consequence of frequent headache attacks. Furthermore,
22
23 our findings may implicate that glutamatergic activity is implicated not only in
24
25 migraine pathogenesis (29), but also in the transition from episodic to chronic
26
27 headache.
28
29
30
31
32
33

34 When considering the more extensive list of 200 top-ranking CpG sites, there is a
35
36 statistically significant enrichment in genes related to several specific functional
37
38 groups and pathways. The strongest enrichment was seen for calcium ion binding.
39
40 Calcium ion binding and signaling is important in a wide range of cellular systems,
41
42 including the synaptic release of neurotransmitters (30). While this presents a
43
44 plausible mechanism for calcium ion imbalance in migraine pathogenesis, no genetic
45
46 association to this or other calcium channels have been found for the common forms
47
48 of migraine (31). The second strongest enrichment was found for genes involved in
49
50 biological cell adhesion. Cell adhesion molecules have multiple roles in tissue
51
52 development and function. In the human brain they play a major role at synapses,
53
54 where they control synaptic morphology and plasticity, and at the neurovascular unit
55
56
57
58
59
60

1
2
3 they form the molecular interface between the vascular and the central nervous
4 system and are involved in the complex signaling between these systems (32, 33).

5
6
7 Lastly, in this study of female subjects, we found enrichment for genes involved in
8 estrogen receptor signaling. This corresponds well with lines of evidence suggesting a
9 role of estrogen in migraine pathogenesis (34). Estrogen receptor signaling has also
10 been discussed specifically in relation to possible epigenetic mechanisms in migraine,
11 since the estrogen receptors predominantly assert their action through the epigenetic
12 programming of target genes (6).
13
14
15
16
17
18
19

20
21
22
23 Strengths of this study include the genome-wide assessment of DNA methylation
24 sites, which allowed us to search for genetic loci associated with headache
25 chronification without relying on previous hypotheses. Also, the headache
26 classification used in this study has been validated by clinical interview. Given the
27 longitudinal design we could determine DNA methylation levels in both cases and
28 controls at two time points, before and after the development of chronic headache,
29 which gave the possibility to detect changes in DNA methylation levels occurring
30 during the natural course of the disease.
31
32
33
34
35
36
37
38
39
40
41
42

43 Our study has clear limitations. Despite a large baseline population of 51,000
44 individuals with available DNA who were characterized with respect to headache, and
45 a follow-up time of 11 years, only 36 cases fulfilled inclusion criteria and could be
46 used in the final analysis. This resulted in limited statistical power, as indicated by the
47 failure to replicate signals identified in the discovery stage in the smaller replication
48 sample. We therefore focused our subsequent analyses on the combined dataset of
49 both stages in order to maximize the power to detect true signals. The loci identified
50
51
52
53
54
55
56
57
58
59
60

1
2
3 from the combined analysis aggregate in functionally meaningful pathways,
4
5 indicating the presence of true signals. Nevertheless, the reported associations will
6
7 require replication in independent samples, but given our complex design this will be
8
9 challenging. This clearly demonstrates the difficulty of designing studies of epigenetic
10
11 changes during the natural course of incident disease, and suggests that international
12
13 collaboration is required to achieve robust sample sizes when using such a study
14
15 design. Another limitation was that we determined DNA methylation in leucocytes
16
17 from whole blood, whereas DNA methylation patterns are to a considerable extent
18
19 tissue-specific, so our findings may not be representative of changes occurring in the
20
21 more relevant tissue in headache, in particular the brain (8). However, for the majority
22
23 of the top associated markers, DNA methylation levels in blood correlated well with
24
25 DNA methylation levels in one or more brain regions, suggesting that our design has
26
27 good potential to detect DNA methylation relevant to migraine. This is also in line
28
29 with previous studies that have found that DNA methylation patterns in non-affected
30
31 tissues such as blood can be of value, even leading to treatment decisions (35).
32
33
34
35
36
37

38 A better understanding of the mechanisms underlying headache chronification will be
39
40 important for developing better strategies to treat and prevent headaches in these
41
42 severely affected patients. Epigenetic changes represent modifiable factors, and
43
44 thereby offer potential targets for novel drug therapies (5). Although candidate
45
46 regions identified in this study require independent replication and further
47
48 characterization, this is a first step towards understanding epigenetic changes
49
50 occurring in headache chronification.
51
52
53
54
55
56
57
58
59
60

Article highlights

- The two CpG sites with strongest association to headache chronification were found in relation to genes that regulate synaptic plasticity.
- Associated CpG sites also showed enrichment for genes involved in calcium ion binding, cell adhesion and estrogen receptor pathways.
- The results suggest possible mechanisms by which epigenetic DNA methylation may be involved in the chronification of headache.

Acknowledgements

This work was supported by the Research Council of Norway (grant 231187/F20 to B.S.W.). P.P. was supported by the Nordic Information for Action eScience Center (NIASC); a Nordic Center of Excellence financed by NordForsk (Project number 62721) and by Estonian Research Council project IUT20-60 Omics for health: an integrated approach to understand and predict human disease. The research leading to these results has received funding from the European Union's Seventh Framework programme project EUROHEADPAIN project (grant nr 602633 to A.P. & A.M.v.d.M.) and the Center for Medical Systems Biology (CMSB) established in the Netherlands Genomics Initiative/Netherlands Organization for Scientific Research (NGI/NWO) (project nr. 05020602409 to A.M.v.d.M.). The Nord-Trøndelag Health Study (The HUNT Study) is a collaboration between HUNT Research Centre (Faculty of Medicine, Norwegian University of Science and Technology NTNU), Nord-Trøndelag County Council, Central Norway Health Authority, and the Norwegian Institute of Public Health. The authors would like to acknowledge Dr. Tsun-Po Yang and Dr. Eshwar Meduri for their advice on data normalization.

Conflict of interest Statement

None declared.

Figure legends

Figure 1: Diagram of the study design and participants. A total of 36 female headache patients who transformed from episodic to chronic headache ('cases') between examinations at baseline and follow-up were matched against 35 female headache patients who did not transform to chronic headache ('controls').

Figure 2: Correlation of DNA methylation in blood and four brain regions for cg01010870 (SH2D5). Top: Boxplot of the distribution of DNA methylation values for cg01010870 split by tissue. Bottom: Four scatterplots demonstrating the relationship between DNA methylation in whole blood and four brain regions: PFC=pre-frontal cortex; EC=entorhinal cortex; STG=superior temporal gyrus; CER=cerebellum. Plots are retrieved using the Blood Brain DNA Methylation Comparison tool (21).

Figure 3. Forest plots showing meta-analysis results separately for cases with and without medication overuse. Meta-analysis beta-value (Beta) and its 95% confidence intervals (95% CI) for the top 10 CpG sites (cg01010870 to cg14118171) from the meta-analysis.

Figure 4: Unsupervised clustering of cases based on the top 200 CpG sites from the meta-analysis. Unsupervised hierarchical clustering using methylation status at

1
2
3 follow-up did not discriminate between cases with (marked in yellow) and without
4
5 medication overuse in either Stage 1 (A) or Stage 2 (B).
6
7

8
9
10 Supplemental Figure 1. Relative expression of SH2D5 in various human tissues.

11 Retrieved from the GTEx database (20). RPKM=Reads Per Kilobase of transcript per
12
13 Million mapped reads. Box plots are shown as median and 25th and 75th percentiles;
14
15 points are displayed as outliers if they are above or below 1.5 times the interquartile
16
17 range.
18
19

20
21
22
23 **References**

- 24
25 [1] Natoli JL, Manack A, Dean B, Butler Q, Turkel CC, Stovner L, Lipton RB.
26
27 Global prevalence of chronic migraine: a systematic review. Cephalalgia.
28
29 2010;30:599-609.
30
31
32 [2] Ashina M. Neurobiology of chronic tension-type headache. Cephalalgia.
33
34 2004;24:161-72.
35
36 [3] Lanteri-Minet M, Duru G, Mudge M, Cottrell S. Quality of life impairment,
37
38 disability and economic burden associated with chronic daily headache, focusing on
39
40 chronic migraine with or without medication overuse: a systematic review.
41
42 Cephalalgia. 2011;31:837-50.
43
44
45 [4] Diener HC, Dodick DW, Goadsby PJ, Lipton RB, Olesen J, Silberstein SD.
46
47 Chronic migraine--classification, characteristics and treatment. Nature reviews
48
49 Neurology. 2011;8:162-71.
50
51
52 [5] Yan H, Tian S, Slager SL, Sun Z, Ordog T. Genome-Wide Epigenetic Studies
53
54 in Human Disease: A Primer on -Omic Technologies. Am J Epidemiol. 2016;183:96-
55
56 109.
57
58
59
60

- 1
2
3 [6] Eising E, N AD, van den Maagdenberg AM, Ferrari MD. Epigenetic
4 mechanisms in migraine: a promising avenue? *BMC medicine*. 2013;11:26.
5
6
7 [7] Feil R, Fraga MF. Epigenetics and the environment: emerging patterns and
8 implications. *Nat Rev Genet*. 2011;13:97-109.
9
10
11 [8] Labrujere S, Stolck L, Verbiest M, de Vries R, Garrelds IM, Eilers PH, et al.
12 Methylation of migraine-related genes in different tissues of the rat. *PloS one*.
13
14
15
16
17
18 [9] Hagen K, Zwart JA, Aamodt AH, Nilsen KB, Brathen G, Helde G, et al. The
19 validity of questionnaire-based diagnoses: the third Nord-Trondelag Health Study
20
21
22
23
24
25 [10] Hagen K, Zwart JA, Vatten L, Stovner LJ, Bovim G. Head-HUNT: validity
26 and reliability of a headache questionnaire in a large population-based study in
27
28
29
30
31
32 [11] Linde M, Stovner LJ, Zwart JA, Hagen K. Time trends in the prevalence of
33
34
35
36
37
38
39 [12] Zwart JA, Dyb G, Hagen K, Svebak S, Stovner LJ, Holmen J. Analgesic
40
41
42
43
44
45
46 [13] Hagen K, Linde M, Steiner TJ, Stovner LJ, Zwart JA. Risk factors for
47
48
49
50
51
52 [14] Bjelland I, Dahl AA, Haug TT, Neckelmann D. The validity of the Hospital
53
54
55
56
57
58
59
60

- 1
2
3 [15] Kvalheim S, Sandven I, Hagen K, Zwart JA. Smoking as a risk factor for
4 chronic musculoskeletal complaints is influenced by age. The HUNT study. Pain.
5 2013;154:1073-9.
6
7
8
9 [16] Aamodt AH, Stovner LJ, Hagen K, Zwart JA. Comorbidity of headache and
10 gastrointestinal complaints. The Head-HUNT Study. Cephalalgia. 2008;28:144-51.
11
12 [17] R Core Team (2013). R: A language and environment for statistical
13 computing. R Foundation for Statistical Computing, Vienna, Austria. URL
14 <http://www.R-project.org/>.
15
16 [18] Magi R, Morris AP. GWAMA: software for genome-wide association meta-
17 analysis. BMC bioinformatics. 2010;11:288.
18
19 [19] Reimand J, Arak T, Vilo J. g:Profiler--a web server for functional
20 interpretation of gene lists (2011 update). Nucleic Acids Res. 2011;39:W307-15.
21
22 [20] The Broad Institute of MIT and Harvard. GTEx Portal, database version 6.
23 Retrieved February 26, 2016, from <http://www.gtexportal.org/> [WWW document].
24
25 [21] Hannon E, Lunnon K, Schalkwyk L, Mill J. Interindividual methylomic
26 variation across blood, cortex, and cerebellum: implications for epigenetic studies of
27 neurological and neuropsychiatric phenotypes. Epigenetics. 2015;10:1024-32.
28
29 <http://epigenetics.iop.kcl.ac.uk/bloodbrain/>.
30
31 [22] Viechtbauer W. Conducting Meta-Analyses in R with the metafor Package. J
32 Stat Softw. 2010;36:1-48.
33
34 [23] Chang MC, Park JM, Pelkey KA, Grabenstatter HL, Xu D, Linden DJ, et al.
35 Narp regulates homeostatic scaling of excitatory synapses on parvalbumin-expressing
36 interneurons. Nat Neurosci. 2010;13:1090-7.
37
38
39
40
41
42
43
44
45
46
47
48
49
50
51
52
53
54
55
56
57
58
59
60

- 1
2
3 [24] Pelkey KA, Barksdale E, Craig MT, Yuan X, Sukumaran M, Vargish GA, et
4 al. Pentraxins coordinate excitatory synapse maturation and circuit integration of
5 parvalbumin interneurons. *Neuron*. 2015;85:1257-72.
6
7
8
9 [25] Gray EJ, Petsalaki E, James DA, Bagshaw RD, Stacey MM, Rocks O, et al.
10 Src homology 2 domain containing protein 5 (SH2D5) binds the breakpoint cluster
11 region protein, BCR, and regulates levels of Rac1-GTP. *J Biol Chem*.
12 2014;289:35397-408.
13
14 [26] Coutelier M, Burglen L, Mundwiler E, Abada-Bendib M, Rodriguez D,
15 Chantot-Bastaraud S, et al. GRID2 mutations span from congenital to mild adult-
16 onset cerebellar ataxia. *Neurology*. 2015;84:1751-9.
17
18 [27] Lauritzen M. Pathophysiology of the migraine aura. The spreading depression
19 theory. *Brain*. 1994;117 (Pt 1):199-210.
20
21 [28] Guo JU, Ma DK, Mo H, Ball MP, Jang MH, Bonaguidi MA, et al. Neuronal
22 activity modifies the DNA methylation landscape in the adult brain. *Nat Neurosci*.
23 2011;14:1345-51.
24
25 [29] Vecchia D, Pietrobon D. Migraine: a disorder of brain excitatory-inhibitory
26 balance? *Trends Neurosci*. 2012;35:507-20.
27
28 [30] Clapham DE. Calcium signaling. *Cell*. 2007;131:1047-58.
29
30 [31] Nyholt DR, LaForge KS, Kallela M, Alakurtti K, Anttila V, Farkkila M, et al.
31 A high-density association screen of 155 ion transport genes for involvement with
32 common migraine. *Hum Mol Genet*. 2008;17:3318-31.
33
34 [32] McCarty JH. Cell adhesion and signaling networks in brain neurovascular
35 units. *Curr Opin Hematol*. 2009;16:209-14.
36
37 [33] Sakisaka T, Takai Y. Cell adhesion molecules in the CNS. *J Cell Sci*.
38 2005;118:5407-10.
39
40
41
42
43
44
45
46
47
48
49
50
51
52
53
54
55
56
57
58
59
60

1
2
3
4
5
6
7
8
9
10
11
12
13
14
15
16
17
18
19
20
21
22
23
24
25
26
27
28
29
30
31
32
33
34
35
36
37
38
39
40
41
42
43
44
45
46
47
48
49
50
51
52
53
54
55
56
57
58
59
60

[34] Sacco S, Ricci S, Degan D, Carolei A. Migraine in women: the role of hormones and their impact on vascular diseases. *J Headache Pain*. 2012;13:177-89.

[35] Schubeler D. Function and information content of DNA methylation. *Nature*. 2015;517:321-6.

For Peer Review

Table 1. Demographic and clinical characteristics at baseline for cases and controls

	Controls (n = 35)	Cases (n = 36)	p-value
Age (mean [SE])	26.1 [0.71]	26.3 [0.76]	0.85 ^a
Higher education (n, [%])	6 [17.1]	10 [27.8]	0.40 ^b
Acute medication overuse (n, [%])	0 [0]	4 [11.1]	0.12 ^b
Daily use of tranquilizers (n, [%])	0 [0]	0 [0]	n.a.
Daily smoking (n, [%])	9 [25.7]	10 [27.8]	1.0 ^b
Low physical activity (n, [%])	22 [66.7]	20 [57.1]	0.46 ^b
Body-mass index (mean [SE])	25.9 [0.70]	25.2 [0.68]	0.44 ^a
HADS Anxiety score (mean [SE])	4.20 [0.52]	5.28 [0.64]	0.20 ^a
HADS Depression score (mean [SE])	2.46 [0.37]	2.51 [0.51]	0.94 ^a
Chronic musculoskeletal complaints (n, [%])	9 [25.7]	16 [45.7]	0.13 ^b
Gastrointestinal complaints (n, [%])	22 [62.9]	25 [69.4]	0.62 ^b
Diabetes mellitus (n, [%])	0 [0]	1 [2.8]	1.0 ^b
Arthritis (n, [%])	0 [0]	1 [2.8]	1.0 ^b

n.a.=not applicable.

^aIndependent samples *t*-test. ^bFisher's exact test.

Table 2. Summary statistics of the 20 CpG sites that showed strongest association with headache chronification in Stage 1

Marker	Chr	Position	Gene(s)*	Discovery (Stage 1)			Replication (Stage 2)		
				β	SE	p	β	SE	p
cg00113321	7	157737485	<i>PTPRN2</i>	0.031	0.0054	1.17E-06	0.003	0.0112	0.79
cg01010870	1	20732775	<i>SH2D5</i>	0.022	0.0041	3.93E-06	0.009	0.0077	0.27
cg20968963	2	2767914	<i>MYT1L</i> ; <i>LINC01250</i>	0.021	0.0040	4.41E-06	0.000	0.0077	0.99
cg07195851	5	3517408	<i>LINC01019</i>	-0.039	0.0075	5.17E-06	0.003	0.0123	0.78
cg18321073	5	12795593	<i>LINC01194</i>	-0.033	0.0063	7.17E-06	-0.012	0.0110	0.29
cg18221862	2	192194504	<i>TMEFF2</i>	0.019	0.0038	8.58E-06	-0.009	0.0058	0.13
cg12614711	7	1496305	<i>INTS1</i>	0.011	0.0022	8.98E-06	-0.012	0.0042	0.007
cg13432241	4	153468133	<i>KIAA0922</i>	-0.016	0.0032	1.25E-05	-0.005	0.0043	0.21
cg03091590	19	42196421	<i>POU2F2</i>	0.023	0.0047	2.14E-05	0.005	0.0087	0.56
cg24993607	13	112602844	<i>RP11-88E10.4</i>	0.023	0.0049	2.25E-05	0.001	0.0072	0.92
cg14006774	19	44676311	<i>CEACAM19</i>	0.027	0.0059	3.81E-05	0.003	0.0102	0.79
cg15127702	7	101436336	<i>COL26A1</i>	0.048	0.0104	3.97E-05	0.008	0.0176	0.65
cg17509967	19	13506280	<i>CACNA1A</i>	0.011	0.0025	3.99E-05	-0.004	0.0063	0.53
cg26835520	16	32253720	<i>TP53TG3D</i>	-0.022	0.0049	4.90E-05	0.002	0.0050	0.69
cg24281422	8	67064238	<i>COPS5</i> ; <i>CSPPI</i>	-0.014	0.0030	5.03E-05	0.010	0.0069	0.16
cg08231664	14	102050295	<i>DYNC1H1</i>	0.023	0.0050	5.38E-05	-0.012	0.0065	0.08
cg20137441	12	132553440	<i>FBRSL1</i>	0.023	0.0051	5.52E-05	-0.003	0.0061	0.58
cg26764019	19	2462520	<i>LOC101928602</i> ; <i>GADD45B</i>	-0.016	0.0036	6.08E-05	0.003	0.0061	0.67
cg04388053	X	153904893	<i>AVPR2</i>	0.021	0.0048	6.49E-05	-0.013	0.0062	0.04
cg14209854	16	11276493	<i>RMI2</i>	0.022	0.0050	6.52E-05	0.004	0.0078	0.63

β , SE (standard error) and p (p-value) for association between headache chronification and change in CpG site methylation (linear regression model), adjusted for age.

Chr=chromosome. Position=genome position (build GRCh38). *For probes not located in direct relation to a gene, the two nearest genes are listed, separated by semicolon.

Table 3. CpG loci demonstrating strongest association to headache chronification in combined meta-analysis

Marker	Chr	Position	Gene**	β	SE	p	β (Stage 1)	β (Stage 2)
cg01010870*	1	20732775	<i>SH2D5</i>	0.018	0.0041	6.17E-06	0.022	0.009
cg11086695*	7	98705889	<i>NPTX2; TMEM130</i>	-0.039	0.0086	6.95E-06	-0.038	-0.041
cg00113321*	7	157737485	<i>PTPRN2</i>	0.024	0.0055	1.23E-05	0.031	0.003
cg18321073	5	12795593	<i>LINC01194</i>	-0.026	0.0061	1.41E-05	-0.033	-0.012
cg02969243*	X	11427642	<i>ARHGAP6</i>	-0.027	0.0062	1.50E-05	-0.028	-0.024
cg05678960*	Y	6265797	<i>TSPY2; LINC00280</i>	0.056	0.0130	1.89E-05	0.054	0.078
cg13952745	4	92304315	<i>GRID2</i>	-0.016	0.0038	1.91E-05	-0.016	-0.016
cg20458019*	4	2275622	<i>ZFYVE28</i>	0.015	0.0036	2.30E-05	0.015	0.015
cg23174760	1	63150382	<i>RP11-335E6.2</i>	0.022	0.0052	2.51E-05	0.024	0.019
cg14118171	9	131475765	<i>PRRC2B</i>	0.014	0.0033	2.70E-05	0.012	0.016

* Methylation levels in blood showing high correlation with methylation levels in one or more regions of the human brain at p-value < 0.05.

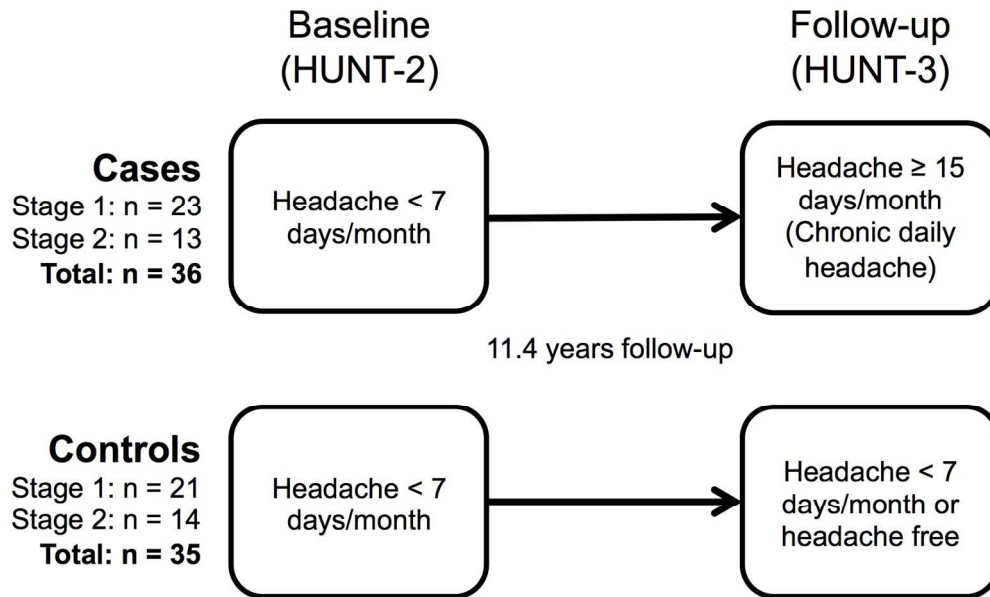
** For CpG markers not located in direct relation to a gene, the two nearest genes are listed.

β , SE (standard error) and p (p-value) for association between headache chronification and change in CpG site methylation in meta-analysis of results from Stages 1 and 2. Chr=chromosome. Position=genome position (build GRCh38).

Table 4. Functional profiling of top associated CpG sites and corresponding genes

p-value*	Term ID	Term name
1.21E-05	GO:0005509	calcium ion binding
4.23E-05	GO:0022610	biological adhesion
3.87E-05	GO:0007155	cell adhesion
7.21E-06	GO:0098609	cell-cell adhesion
6.52E-10	GO:0098742	cell-cell adhesion via plasma-membrane adhesion molecules
6.68E-12	GO:0007156	homophilic cell adhesion via plasma membrane adhesion molecules
0.024	GO:0030520	intracellular estrogen receptor signaling pathway
0.037	GO:0034111	negative regulation of homotypic cell-cell adhesion

* Functional profiling using *g:Profiler*. The p-values are corrected for multiple testing. Highest-level hierarchical groups and pathways ('main terms') that were significant are marked in bold. Increased indent indicates deeper level in the local hierarchy under the group or pathway.



28 Figure 1: Diagram of the study design and participants. A total of 36 female headache patients who
29 transformed from episodic to chronic headache ('cases') between examinations at baseline and follow-up
30 were matched against 35 female headache patients who did not transform to chronic headache ('controls')

31 151x91mm (300 x 300 DPI)

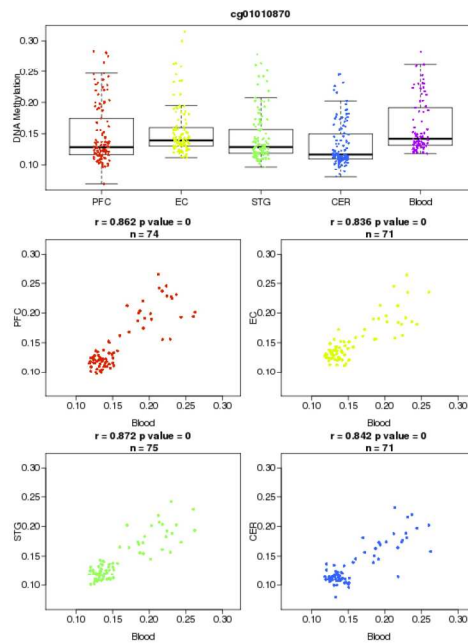


Figure 2: Correlation of DNA methylation in blood and four brain regions for cg01010870 (SH2D5). Top: Boxplot of the distribution of DNA methylation values for cg01010870 split by tissue. Bottom: Four scatterplots demonstrating the relationship between DNA methylation in whole blood and four brain regions: PFC=pre-frontal cortex; EC=entorhinal cortex; STG=superior temporal gyrus; CER=cerebellum. Plots are retrieved using the Blood Brain DNA Methylation Comparison tool (21)

297x209mm (300 x 300 DPI)

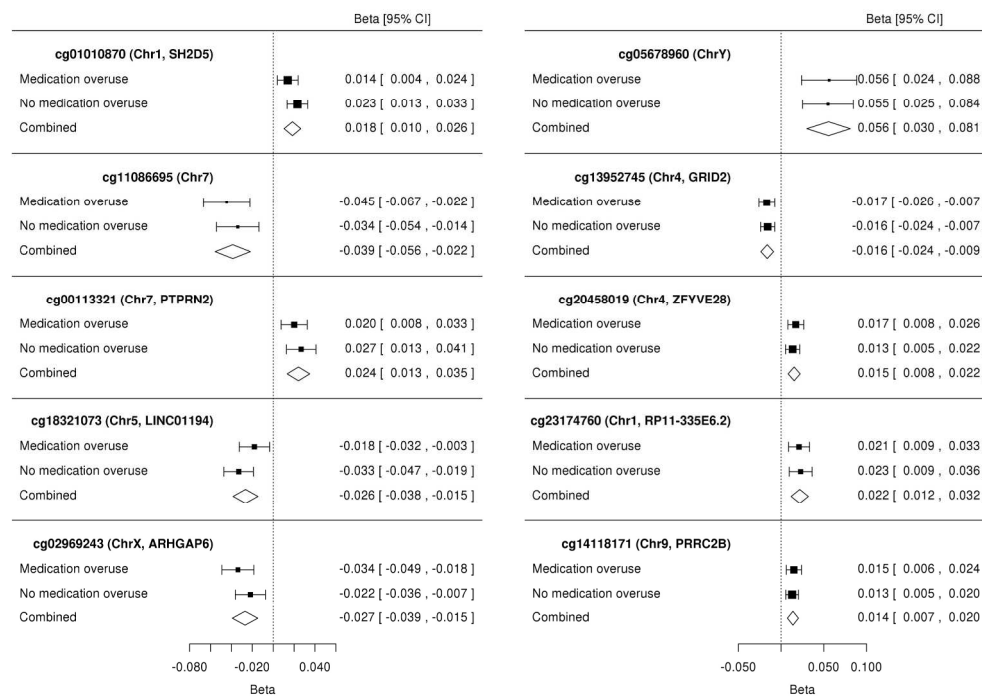


Figure 3. Forest plots showing meta-analysis results separately for cases with and without medication overuse. Meta-analysis beta-value (Beta) and its 95% confidence intervals (95% CI) for the top 10 CpG sites (cg01010870 to cg14118171) from the meta-analysis

254x179mm (300 x 300 DPI)

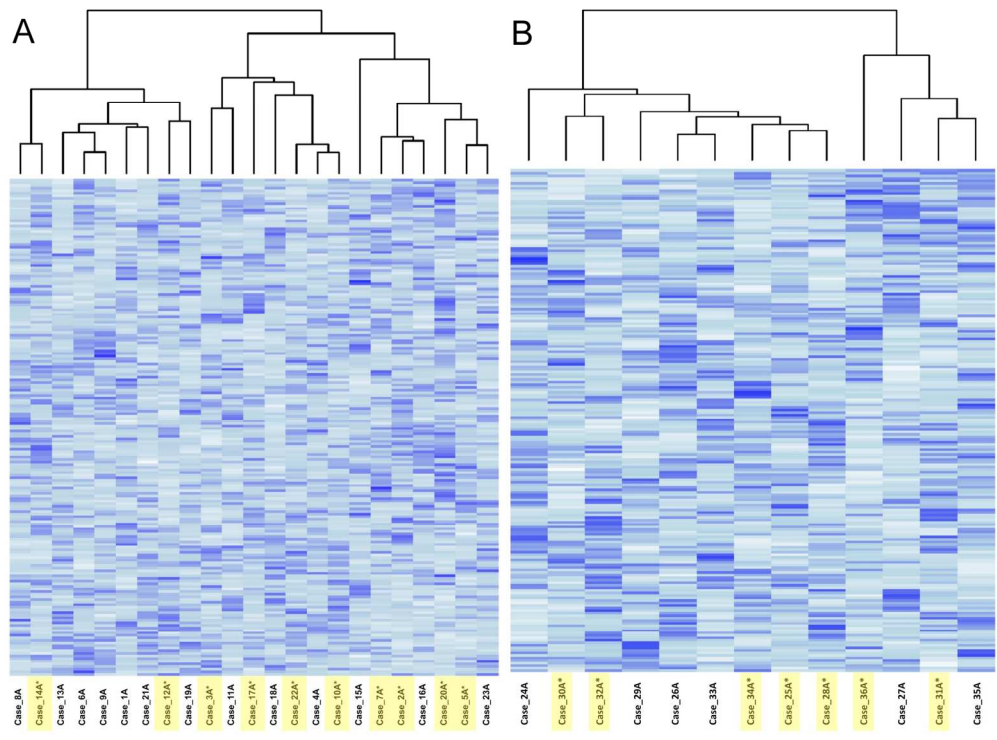


Figure 4: Unsupervised clustering of cases based on the top 200 CpG sites from the meta-analysis. Unsupervised hierarchical clustering using methylation status at follow-up did not discriminate between cases with (marked in yellow) and without medication overuse in either Stage 1 (A) or Stage 2 (B)

178x132mm (300 x 300 DPI)

Epigenetic DNA methylation changes associated with headache chronification: A retrospective case-control study

SUPPLEMENTAL METHODS

Blood sampling and DNA isolation

Blood samples were donated from subjects in the HUNT2 or HUNT3 studies at the time of inclusion. Serum was separated from whole blood within 2 hours by centrifugation, placed in a refrigerator together with a blood clot or EDTA whole blood, and transported in a cooler within 1 - 3 days to the HUNT Biobank, where it was stored at -70°C . DNA was isolated from leukocytes from thawed blood clots or EDTA whole blood by using Gentra Puregene Blood Kit (Qiagen Diagnostics GmbH, Hamburg, Germany) or MasterPure DNA purification Kit for blood, Buffy Coat DNA Purification Protocol (Epicentre) and stored at -20°C . DNA concentrations were quantified using PicoGreen reagents, and every eight normalized sample was spectrophotometrically tested a second time using NanoDrop (ND1000 or ND8000) (Thermo Fisher Scientific Inc., Waltham, MA, USA). Purity was assessed based on the A260/A280 ratios.

Genome-wide quantification of DNA methylation

Bisulfite conversion and array quantification of DNA methylation was performed in two separate stages. In Stage 1, 96 samples from 24 cases and 24 controls were analyzed at the Institute for Molecular Medicine Finland (FIMM), Helsinki, Finland; in Stage 2, 64 samples from 16 cases and 16 controls were analyzed at the Wellcome Trust Sanger Institute, Cambridge, UK. Bisulfite conversion of 1 μg of the DNA sample was performed using the EZ-96 DNA Methylation Kit (Zymo Research, Irvine, CA, USA) according to the manufacturer's protocol. 5 μl of the bisulfite converted DNA were used for genome-wide methylation profiling using the Illumina Infinium HumanMethylation450 BeadChip (Illumina, San Diego, CA, USA) according to manufacturer's protocol. After hybridization and washing, the BeadChips were scanned using the Illumina HiScan SQ scanner. The efficiency of the bisulfite conversion was checked according to the manufacturer's protocol.

Data normalization and quality control

Raw image data were imported into the GenomeStudio (Illumina version 2011.1) Methylation module (version 1.9), which was used to extract the fluorescent signal intensities and pre-normalize the data. Briefly, background signal intensity was subtracted from the raw signal intensity values and data were normalized with respect to the Illumina internal control probes. The methylation level was calculated as a β -value (*AVG_Beta*), scaling from 0 (not methylated) to 1 (fully methylated), representing the fraction of methylated DNA molecules at the corresponding CpG site in the assayed sample. These data were exported from the GenomeStudio as standard Illumina report files and further normalized and analyzed with custom scripts. Data for stages 1 and 2 were jointly quantile-normalized (1) with R software (version 3.2.3) (2) as described by Grundberg et al. (3), followed by the PCA analysis of β -values to detect any potential outliers and other quality control steps.

In sample-wise quality control steps, altogether 9 samples were excluded. Of the 40 cases and 40 controls selected for methylation typing (24 cases and 24 controls

1
2
3 in Stage 1; 16 cases and 16 controls in Stage 2), samples were excluded because of
4 low DNA concentration ($n = 2$); because they were red staining outliers ($n = 2$); had
5 gender mismatch between methylation typing and phenotype annotation ($n = 1$); or
6 were sample outliers as identified by PCA analysis ($n = 4$). Samples were also
7 excluded if after above-mentioned exclusions they did not have data for both time
8 points available, resulting in 36 cases (23 in Stage 1 and 13 in Stage 2) and 35
9 controls (21 in Stage 1 and 14 in Stage 2) contributing to the final analysis.

10
11
12 Marker (CpG site) wise quality control was carried out similarly to Grundberg
13 and colleagues (3). Briefly, out of 485,775 CpG markers initially interrogated by the
14 HumanMethylation450 chip, all markers were excluded that had a call rate ≤ 0.9 ;
15 overlapped with single nucleotide variants with minor allele frequency $\geq 5\%$ in the
16 CEU panel of the 1000Genomes Project (4); or overlapped with copy number variants
17 in 1000Genomes Project. After quality control 431,282 and 436,517 markers were
18 available for analysis in Stage 1 and Stage 2, respectively.

20 21 **Genomic annotation of interrogated CpG sites**

22 To assign each assayed CpG marker to their corresponding gene, genomic and gene-
23 level annotations provided by Illumina (HumanMethylation450_15017482_v.1.1.csv,
24 based on the human reference sequence assembly version GRCh37/hg19) were used.
25 In order to get the latest genomic annotation of the meta-analysis top-ranking CpG
26 sites for functional profiling, chromosomal coordinates of the top 1000 CpG sites
27 were converted to the current version of the human reference sequence assembly
28 (GRCh38/hg38) with the liftOver web-based batch conversion tool
29 (<http://genome.ucsc.edu/cgi-bin/hgLiftOver>, by using default parameters).

30 31 32 **Blood cell composition estimates**

33 White blood cell (WBC) composition is regarded a main source of variation in DNA
34 methylation analyses of whole blood. To check for possible WBC composition biases
35 in our samples, the WBC composition was estimated from the DNA methylation
36 profiles using the R-package minfi (version 1.8.9) developed by Houseman et al. (5).
37 No significant differences were found in white blood cell composition between cases
38 and controls in either Stage 1 or Stage 2.

39 40 41 42 **Functional profiling of top-ranking CpG sites using g:profiler**

43 Functional profiling of the meta-analysis top-ranking CpG sites was carried out by
44 utilizing g:Profiler web-based software (version r1536, <http://biit.cs.ut.ee/gprofiler>)
45 using Ensembl 83 genomic annotations, Gene Ontology release 2016-01-21 and
46 KEGG biological pathways release 2016-01-25 (6). Considering all genes in user-
47 provided gene lists or chromosomal regions, g:Profiler performs statistical gene set
48 enrichment analysis to find which functional gene groups or biological pathways are
49 significantly over-represented in user-provided input. As our input CpG site
50 coordinates were ordered by their meta-analysis association p-values, the 'Ordered
51 query' option was used, and we also required at least 3 CpG site-related genes in any
52 tested functional group or pathway (option 'Size of query / term intersection'). Only
53 CpG markers that were successfully called and showed the same effect direction in
54 both stages were included, in order to enrich the input for true positive signals. The
55 optimal size of the input set of CpG sites for the gene set enrichment analysis depends
56 on a balance between including a sufficient number of sites to enable the detection of
57 enrichment, while limiting the input set so that the highest possible proportion of true
58 signals is obtained. To this end, the analysis was run using incrementally larger input
59
60

sets, including 10, 20, 50, 100 and 200 meta-analysis top-ranking CpG markers respectively. The sets including 10, 20, 50 and 100 markers did not return significant enriched functional groups or pathways and are therefore not presented. The results were considered significant if the multiple testing corrected p-value for enriched group or pathway was ≤ 0.05 .

References

- [1] Bolstad BM, Irizarry RA, Astrand M, Speed TP. A comparison of normalization methods for high density oligonucleotide array data based on variance and bias. *Bioinformatics*. 2003;19:185-93.
- [2] R Core Team (2013). R: A language and environment for statistical computing. R Foundation for Statistical Computing, Vienna, Austria. URL <http://www.R-project.org/>.
- [3] Grundberg E, Meduri E, Sandling JK, Hedman AK, Keildson S, Buil A, et al. Global analysis of DNA methylation variation in adipose tissue from twins reveals links to disease-associated variants in distal regulatory elements. *Am J Hum Genet*. 2013;93:876-90.
- [4] Genomes Project C, Auton A, Brooks LD, Durbin RM, Garrison EP, Kang HM, et al. A global reference for human genetic variation. *Nature*. 2015;526:68-74.
- [5] Houseman EA, Accomando WP, Koestler DC, Christensen BC, Marsit CJ, Nelson HH, et al. DNA methylation arrays as surrogate measures of cell mixture distribution. *BMC bioinformatics*. 2012;13:86.
- [6] Reimand J, Arak T, Vilo J. g:Profiler--a web server for functional interpretation of gene lists (2011 update). *Nucleic Acids Res*. 2011;39:W307-15.

1
2
3
4
5
6
7
8
9
10
11
12
13
14
15
16
17
18
19
20
21
22
23
24
25
26
27
28
29
30
31
32
33
34
35
36
37
38
39
40
41
42
43
44
45
46
47
48
49

Supplemental Table 1. Significantly over-represented functional groups, and their corresponding genes

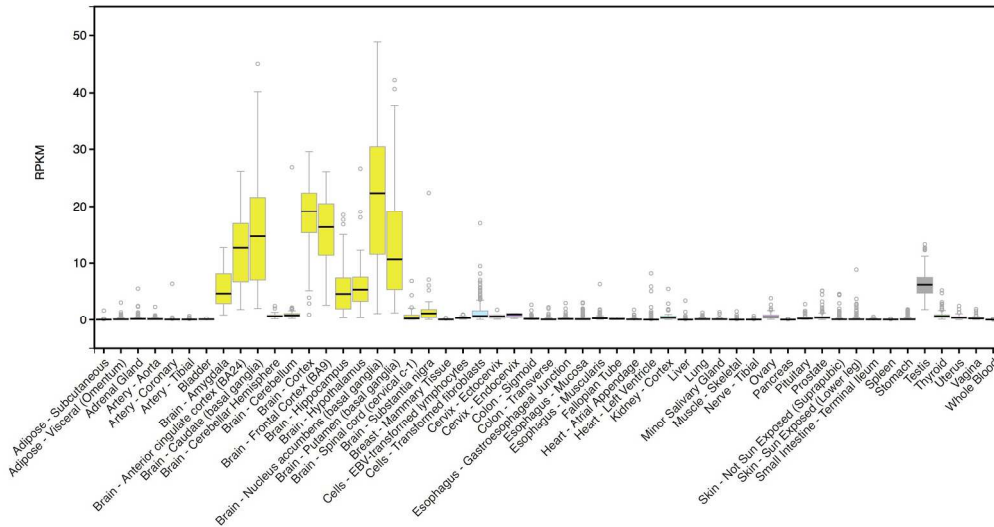
Term name	Term ID	Term type	p-value	Term group	Depth in group	Gene list*
Negative regulation of homotypic cell-cell adhesion	GO:0034111	Biological process	3.67E-02	4	1	<i>IL4R</i> (ENSG00000077238), <i>KIAA0922</i> (ENSG00000121210), <i>CIQTNF1</i> (ENSG00000173918), <i>ABAT</i> (ENSG00000183044)
Intracellular estrogen receptor signaling pathway	GO:0030520	Biological process	2.39E-02	3	1	<i>ESR1</i> (ENSG00000091831), <i>CNOT1</i> (ENSG00000125107), <i>DYX1C1</i> (ENSG00000256061)
Biological adhesion	GO:0022610	Biological process	4.23E-05	2	1	<i>FYN</i> (ENSG00000010810), <i>ARHGAP6</i> (ENSG00000047648), <i>PVR</i> (ENSG00000073008), <i>IL4R</i> (ENSG00000077238), <i>PCDHGA2</i> (ENSG00000081853), <i>PCDHB15</i> (ENSG00000113248), <i>NRP2</i> (ENSG00000118257), <i>TGFBI</i> (ENSG00000120708), <i>KIAA0922</i> (ENSG00000121210), <i>NLGN4X</i> (ENSG00000146938), <i>HSD17B12</i> (ENSG00000149084), <i>GRID2</i> (ENSG00000152208), <i>COL26A1</i> (ENSG00000160963), <i>CIQTNF1</i> (ENSG00000173918), <i>CNTNAP2</i> (ENSG00000174469), <i>ABAT</i> (ENSG00000183044), <i>DLL1</i> (ENSG00000198719), <i>PCDHGA1</i> (ENSG00000204956), <i>PCDHGA5</i> (ENSG00000253485), <i>PCDHGA7</i> (ENSG00000253537), <i>PCDHGA6</i> (ENSG00000253731), <i>PCDHGA8</i> (ENSG00000253767), <i>PCDHGB2</i> (ENSG00000253910), <i>PCDHGB4</i> (ENSG00000253953), <i>PCDHGB1</i> (ENSG00000254221), <i>PCDHGA3</i> (ENSG00000254245), <i>PCDHGB3</i> (ENSG00000262209), <i>PCDHGA4</i> (ENSG00000262576)
Cell adhesion	GO:0007155	Biological process	3.87E-05	2	2	<i>FYN</i> (ENSG00000010810), <i>ARHGAP6</i> (ENSG00000047648), <i>PVR</i> (ENSG00000073008), <i>IL4R</i> (ENSG00000077238), <i>PCDHGA2</i> (ENSG00000081853), <i>PCDHB15</i> (ENSG00000113248), <i>NRP2</i> (ENSG00000118257), <i>TGFBI</i> (ENSG00000120708), <i>KIAA0922</i> (ENSG00000121210), <i>NLGN4X</i> (ENSG00000146938), <i>HSD17B12</i> (ENSG00000149084), <i>GRID2</i> (ENSG00000152208), <i>COL26A1</i> (ENSG00000160963), <i>CIQTNF1</i> (ENSG00000173918), <i>CNTNAP2</i> (ENSG00000174469), <i>ABAT</i> (ENSG00000183044), <i>DLL1</i> (ENSG00000198719), <i>PCDHGA1</i> (ENSG00000204956), <i>PCDHGA5</i> (ENSG00000253485), <i>PCDHGA7</i>

						(ENSG00000253537), <i>PCDHGA6</i> (ENSG00000253731), <i>PCDHGA8</i> (ENSG00000253767), <i>PCDHGB2</i> (ENSG00000253910), <i>PCDHGB4</i> (ENSG00000253953), <i>PCDHGB1</i> (ENSG00000254221), <i>PCDHGA3</i> (ENSG00000254245), <i>PCDHGB3</i> (ENSG00000262209), <i>PCDHGA4</i> (ENSG00000262576)
Cell-cell adhesion	GO:0098609	Biological process	7.21E-06	2	3	<i>IL4R</i> (ENSG0000077238), <i>PCDHGA2</i> (ENSG0000081853), <i>PCDHB15</i> (ENSG00000113248), <i>KIAA0922</i> (ENSG00000121210), <i>CIQTNFI</i> (ENSG00000173918), <i>ABAT</i> (ENSG00000183044), <i>PCDHGA1</i> (ENSG00000204956), <i>PCDHGA5</i> (ENSG00000253485), <i>PCDHGA7</i> (ENSG00000253537), <i>PCDHGA6</i> (ENSG00000253731), <i>PCDHGA8</i> (ENSG00000253767), <i>PCDHGB2</i> (ENSG00000253910), <i>PCDHGB4</i> (ENSG00000253953), <i>PCDHGB1</i> (ENSG00000254221), <i>PCDHGA3</i> (ENSG00000254245), <i>PCDHGB3</i> (ENSG00000262209), <i>PCDHGA4</i> (ENSG00000262576)
Cell-cell adhesion via plasma-membrane adhesion molecules	GO:0098742	Biological process	6.52E-10	2	4	<i>PCDHGA2</i> (ENSG0000081853), <i>PCDHB15</i> (ENSG00000113248), <i>PCDHGA1</i> (ENSG00000204956), <i>PCDHGA5</i> (ENSG00000253485), <i>PCDHGA7</i> (ENSG00000253537), <i>PCDHGA6</i> (ENSG00000253731), <i>PCDHGA8</i> (ENSG00000253767), <i>PCDHGB2</i> (ENSG00000253910), <i>PCDHGB4</i> (ENSG00000253953), <i>PCDHGB1</i> (ENSG00000254221), <i>PCDHGA3</i> (ENSG00000254245), <i>PCDHGB3</i> (ENSG00000262209), <i>PCDHGA4</i> (ENSG00000262576)
Homophilic cell adhesion via plasma membrane adhesion molecules	GO:0007156	Biological process	6.68E-12	2	5	<i>PCDHGA2</i> (ENSG0000081853), <i>PCDHB15</i> (ENSG00000113248), <i>PCDHGA1</i> (ENSG00000204956), <i>PCDHGA5</i> (ENSG00000253485), <i>PCDHGA7</i> (ENSG00000253537), <i>PCDHGA6</i> (ENSG00000253731), <i>PCDHGA8</i> (ENSG00000253767), <i>PCDHGB2</i> (ENSG00000253910), <i>PCDHGB4</i> (ENSG00000253953), <i>PCDHGB1</i> (ENSG00000254221), <i>PCDHGA3</i> (ENSG00000254245), <i>PCDHGB3</i> (ENSG00000262209), <i>PCDHGA4</i> (ENSG00000262576)

1
2
3
4
5
6
7
8
9
10
11
12
13
14
15
16
17
18
19
20
21
22
23
24
25
26
27
28
29
30
31
32
33
34
35
36
37
38
39
40
41
42
43
44
45
46
47
48
49

Calcium ion binding	GO:0005509	Molecular function	1.21E-05	1	1	<i>PCDHGA2</i> (ENSG00000081853), <i>PCDHB15</i> (ENSG00000113248), <i>SLC25A12</i> (ENSG00000115840), <i>DLL1</i> (ENSG00000198719), <i>PCDHGA1</i> (ENSG00000204956), <i>PCDHGA5</i> (ENSG00000253485), <i>PCDHGA7</i> (ENSG00000253537), <i>PCDHGA6</i> (ENSG00000253731), <i>PCDHGA8</i> (ENSG00000253767), <i>PCDHGB2</i> (ENSG00000253910), <i>PCDHGB4</i> (ENSG00000253953), <i>PCDHGB1</i> (ENSG00000254221), <i>PCDHGA3</i> (ENSG00000254245), <i>PCDHGB3</i> (ENSG00000262209), <i>PCDHGA4</i> (ENSG00000262576)
----------------------------	------------	--------------------	----------	---	---	----------------------------------------------------------------------------------------------------------------------------------------------------------------------------------------------------------------------------------------------------------------------------------------------------------------------------------------------------------------------------------------------------------------------------------------------------------------------------------------------------------------------------

Gene set enrichment analysis using *g:Profiler*. The p-values are corrected for multiple testing.
 *Genes corresponding to the top 200 CpG sites (See Supplementary Methods, Genomic annotation of interrogated CpG sites), which are annotated to the given term name. HUGO Gene Nomenclature Committee name followed (in parentheses) by Ensembl ID.



Supplemental Figure 1. Relative expression of SH2D5 in various human tissues. Retrieved from the GTEx database (20). RPKM=Reads Per Kilobase of transcript per Million mapped reads. Box plots are shown as median and 25th and 75th percentiles; points are displayed as outliers if they are above or below 1.5 times the interquartile range

204x108mm (300 x 300 DPI)