

memo

COVID-19-EPIDEMIC :

COVID-19 and risk factors
for hospital admission,
severe disease and death –
a rapid review, 3rd update

Title	COVID-19 and risk factors for hospital admission, severe disease and death – a rapid review, 3 rd update
Institution	Folkehelseinstituttet / Norwegian Institute of Public Health
Responsible	Camilla Stoltenberg, Director-General
Authors	Himmels JPW, <i>senior advisor, Norwegian Institute of Public Health</i> , Borge TC, <i>senior advisor, Norwegian Institute of Public Health</i> Brurberg KG, <i>Head of Department, Norwegian Institute of Public Health</i> Gravningen KM, <i>senior medical officer, Norwegian Institute of Public Health</i> Feruglio SL, <i>senior medical officer, Norwegian Institute of Public Health</i> Berild JD, <i>medical officer, Norwegian Institute of Public Health</i>
ISBN	978-82-8406-141-2
Memo	November – 2020
Publication type	Rapid review
Number of pages	28 (31 appendices included)
Commissioned by	Folkehelseinstituttet / Norwegian Institute of Public Health
Citation	Himmels JPW, Borge TC, Brurberg KG, Gravningen KM, Feruglio SL, Berild JD. COVID-19: COVID-19 and risk factors for hospital admission, severe disease and death [Covid-19 og risikofaktorer for sykehusinnleggelse, alvorlig sykdom og død - en hurtigoversikt, tredje oppdatering. Hurtigoversikt 2020] Oslo: Norwegian Institute of Public Health, 2020.

Key messages

This rapid review is an update of a version published on May 12th, 2020. In this review, only peer-reviewed population-based studies with more than 5000 laboratory test positive cases are included.

The findings are based on searches in MEDLINE and Embase on October 27th, 2020. One researcher screened the search results, and two researchers selected studies for inclusion and synthesised the results. Experts in the field assisted with study inclusion and provided helpful input during the review process. In the current situation, there remains an urgent need for identifying the most important evidence quickly. Hence, we opted for this rapid approach despite an inherent risk of overlooking key evidence or making misguided judgements.

We included five studies that reported results from multivariate analyses of demographic and medical risk factors. We excluded risk factors that constituted laboratory findings, vital signs or symptoms of COVID-19. Two studies were from England, one from the UK, one from the USA and one study was from Denmark.

Meta-analysis was not feasible, and the main results of this rapid review are therefore presented in tabular and narratively. Risk factors associated with (i) hospitalisation, (ii) severe/critical disease, and (iii) death due to COVID-19 are reported separately below.

Risk factors for hospitalisation due to COVID-19

Three studies assessed risk factors for need for hospitalisation due to COVID-19. Overall, age, comorbidities and severity of disease were found to be strong predictors of hospital admission. All three studies provided a granular overview of adjusted hazard ratios (HRs)/odds ratios (ORs) for a broad selection of comorbidities, conditions and ongoing treatments. Most of these were associated with a greater risk for admission, with apparent increases in risk based on severity of condition. Two studies showed a clear dose response relationship between increasing age and hospital admission. Two studies reported an increased risk for hospital admission in adult males. Two studies reported an increased risk of hospital admission with increasing body mass index (BMI) and the majority of assessed ethnicities compared to whites. One study reported increasing risk by number of co-existing comorbidities and severe kidney disease, diabetes type I, ongoing chemotherapy, severe immunodeficiency, heart failure and Down syndrome stand out with a greater associated risk of admission (OR/HR ≥ 3).

Risk factors for developing more severe or critical COVID-19 (ICU treatment)

Two studies assessed risk factors for ICU admissions due to COVID-19, but information on ICU admission alone was only provided by a single study with descriptive information. We therefore included severe illness in this outcome group, as another study defined this as a composite measure including ICU admissions. Overall, age was found to be the strongest predictor of severe COVID-19, with a dose response relationship between increasing age and increased risk. Furthermore, male sex, morbid obesity (BMI >40), heart failure and diabetes was associated with

increased risk for severe COVID-19. Being of African American decent was associated with decreased risk.

Risk factors for death due to COVID-19

Four studies assessed risk factors for death due to COVID-19. All studies provided a granular overview of predicting factors. Overall, increasing age was found to be the strongest predictor of death due to COVID-19. Furthermore, male sex, number of and severity of most comorbidities were found to be significant predictors of COVID-19-related death. Ethnicity other than white was consistently associated with modest but increased risk of death, with Blacks having the highest risk of death. Two studies found increasing risk of death with increasing degree of deprivation. Kidney disease, diabetes mellitus type I and II, dementia, ongoing chemotherapy, organ transplant patients, severe immunodeficiency, major psychiatric disorder with antipsychotics, cerebral palsy and Down syndrome (one study) were reported as the strongest predictors of COVID-19 related death (OR/HR ≥ 3). Most singular comorbidities were associated with an increased risk of death.

Conclusion

Based on the data at hand, the elderly are clearly the main group at risk of hospital admission, severe illness, and death if infected by COVID-19. Most comorbidities appear to increase risk. An increasing number and severity of comorbidities contribute to a further increase in the overall risk. Male sex, obesity, non-white ethnicity and deprivation are also associated with increased risk.

Hovedbudskap

Denne hurtigoppsummeringen er en oppdatering av en tidligere versjon, publisert 12. mai, 2020 (1). I denne oppdaterte versjonen inkluderte vi kun fagfellevurderte populasjonsbaserte studier med over 5000 deltagere med påvist covid-19.

Resultatene som presenteres i denne oppsummeringen er basert på litteratursøk i MEDLINE og Embase den 27. oktober 2020. En forsker gjennomgikk søkeresultatene og to forskere valgte ut studier for inklusjon, uthenting av data og sammenstilling av resultater. Ekspertene i relevante fagfelt bidro i vurderingen av studier for inklusjon samt bisto med faglig input fortløpende igjennom reviewprosessen.

Sett i lys av dagens situasjon er det et stort behov for å raskt kunne innhente evidensbasert kunnskap om populasjonsgrupper som er sårbare for alvorlige utfall knyttet til covid-19. Derfor valgte vi en hurtigoppsummeringstilnærming for denne rapporten på tross av den potensielle risikoen for å overse viktig informasjon eller å foreta forhastede vurderinger.

Vi inkluderte fem studier som rapporterte resultater fra multivariate analyser av demografiske og medisinske risikofaktorer. Vi ekskluderte risikofaktorer rapportert som biologiske markører, fysiologiske funksjoner og symptomer på covid-19. De inkluderte studiene var fra følgende land; to fra England, én fra Storbritannia, én fra USA og én fra Danmark.

Sammenstilling av resultatene med metaanalytiske metoder ble vurdert som ikke gjennomførbart, så hovedresultatene i denne hurtigoppsummeringen blir presentert narrativt og i tabellformat. Risikofaktorer assosiert med (i) sykehusinnleggelse, (ii) alvorlig sykdomsforløp og (iii) død knyttet til covid-19 rapporteres separat nedenfor.

Risikofaktorer for sykehusinnleggelse på grunn av covid-19

Tre studier undersøkte risikofaktorer for sykehusinnleggelse på grunn av covid-19. Samlet sett så var høy alder, komorbiditet og alvorlighetsgrad av lidelser assosiert med økt risiko for sykehusinnleggelse. Alle studiene rapporterte resultater fra multivariate analyser med HRs eller ORs som effektestimater for et stort antall demografiske og medisinske risikofaktorer. De fleste medisinske tilstandene var assosiert med forhøyet risiko for sykehusinnleggelse, hvor tilstandens alvorlighetsgrad kombinert med antall komorbide lidelser i stor grad påvirket risikoen. To studier viste en sterk positiv sammenheng mellom økt alder og økt risiko for sykehusinnleggelse. Videre rapporterte to studier forhøyet risiko for sykehusinnleggelse for menn, de med overvekt og fedme, og de fleste ikke-hvite etniske grupper. Videre ble alvorlig nyresykdom, type 1-diabetes, pågående cellegiftkur, hjertesvikt, alvorlig immunsvikt og Downs syndrom assosiert med en betydelig forhøyet risiko for sykehusinnleggelse (OR/HR ≥ 3).

Risikofaktorer for alvorlig eller kritisk covid-19 forløp og innleggelse ved akuttmottak

To studier undersøkte risikofaktorer for innleggelse ved akuttmottak på grunn av covid-19, men kun én studie så på dette utfallet separat og det ble kun beskrevet deskriptivt i løpende tekst. Derfor inkluderte vi alvorlig sykdomsforløp i denne utfallsgruppen, da en annen studie definerte dette som et komposittmål hvor innleggelse ved akuttmottak var inkludert. I denne studien var økt alder den sterkeste prediktoren for alvorlig sykdomsforløp, med en klar dose-respons sammenheng. Videre ble menn, fedme grad III (BMI>40), hjertesvikt, diabetes assosiert med en forhøyet risiko for alvorlig sykdomsforløp. Afroamerikansk etnisitet var assosiert med en lavere risiko for alvorlig sykdomsforløp.

Risikofaktorer for covid-19 relatert død

Fire studier undersøkte risikofaktorer for covid-19 relatert død. Samlet sett så ble det funnet at økende alder var den sterkeste prediktoren for covid-19 relatert død. Videre ble ikke-hvit etnisitet, menn, de fleste medisinske tilstander, komorbiditet og sykdommenes alvorlighetsgrad identifisert som risikofaktorer for covid-19 relatert død. To studier fant også en økt risiko for covid-19 relatert død ved økt grad av fattigdom. Alvorlig nyresykdom, diabetes, demens, pågående cellegiftkur, organtransplantasjonspasienter, alvorlig immunsvikt, psykiske lidelser behandlet med antipsykotika, cerebral parese og Downs syndrom ble rapportert som de sterkeste medisinske prediktorene for covid-19 relatert død (OR/HR >=3).

Konklusjon

Basert på resultatene fra de inkluderte studiene er det tydelig at eldre mennesker er den populasjonen med høyest risiko for sykehusinnleggelse, alvorlig sykdomsforløp og død relatert til covid-19. De fleste kroniske sykdommer er assosiert med forhøyet risiko, hvor komorbiditet og sykdomsalvorlighet har stor betydning for den overordnede risikoen for de ulike covid-19 utfallene. Menn, ikke-hvit etnisitet, fattige og de med fedme har også en sannsynlig forhøyet risiko for covid-19 utfallene inkludert i denne hurtigoversikten.

Table of content

Key messages	2
Hovedbudskap	4
Table of content	6
Problem statement	8
Methods	9
Literature search	9
Study selection	9
Review process	9
Peer review	10
Results	11
Description of studies	11
Risk factors for need for hospitalisation due to COVID-19	14
Brief summary	14
Clift et al	14
Petrilli et al	14
Reilev et al	14
Across the studies	15
Risk factors for severe illness, including ICU admission, due to COVID-19	18
Brief summary	18
Reilev et al	18
Petrilli et al	18
Risk factors for death due to COVID-19	20
Brief summary	20
Clift et al	20
Reilev et al	20
Williamson et al	21
Across the studies	21
Discussion and conclusion	24
Conclusion	25
References	26
Appendix	29

Appendix 1; Search strategy

29

Appendix 2; Excluded studies

31

Problem statement

In relation to the ongoing COVID-19 outbreak, it is important to gather information about which patient groups are most at risk of severe outcomes. The outbreak team at the Norwegian Institute of Public Health has asked us to update a rapid review of the existing research on risk factors for hospitalisation, serious/critical COVID-19, or death, published May 20th 2020 (1).

Methods

Literature search

To investigate which demographic and medical risk factors are associated with hospitalisation, severity of disease, and death due to COVID-19, we searched for studies with more than 5000 participants that had laboratory confirmed COVID-19 and reported risk factors for the three main outcomes. Research librarian Elisabet Hafstad conducted a search on October 27th, 2020 in the MEDLINE and Embase database for studies published in the period 01.08.2020 -26.10.2020.

Inclusion criteria:

Population: More than 5000 confirmed COVID-19 participants from the general population.
COVID-19 cases should be defined by PCR/ antigen testing.

Outcome: Hospital admission, ICU admission, ICU with ventilation, severe illness, death

Study types: Cohort studies, prospective studies, retrospective studies

Study selection

We included publications assessing the importance of various demographic and medical risk factors for the risk of COVID-19-related hospitalisation, severe disease/ICU admission and death. The factors examined were age, sex, ethnicity, deprivation, body mass index (BMI), underlying comorbidities, as well as substance and medicine use. Clinical and laboratory-based risk factors were not included in this report. In this third report update we excluded studies with less than 5000 participants due to power considerations. Only studies where the relative importance of various risk factors was assessed using multivariate statistical models were included. We excluded systematic reviews and studies only assessing risk factors in univariate analyses.

Review process

One researcher (JH) performed title and abstract screening. Two researchers (TB, JH) reviewed the studies in full text, selected studies for inclusion, and extracted and summarised data/results from included studies in tables. A group of experts in the field assisted during the study inclusion process (KG, SF, JB). This rapid review includes a formal quality assessment with the Newcastle-Ottawa quality assessment scale of included papers (2), but does not include a grading of the certainty of evidence. Therefore, the results should be interpreted with caution.

Peer review

Kirsten Gravningen, Siri Feruglio (both senior medical officers, Norwegian Institute of Public Health), and Jacob Berild (medical officer, Norwegian Institute of Public Health) specified the review criteria, assisted in final article selection, formatting of tables and critically reviewed the draft before publication.

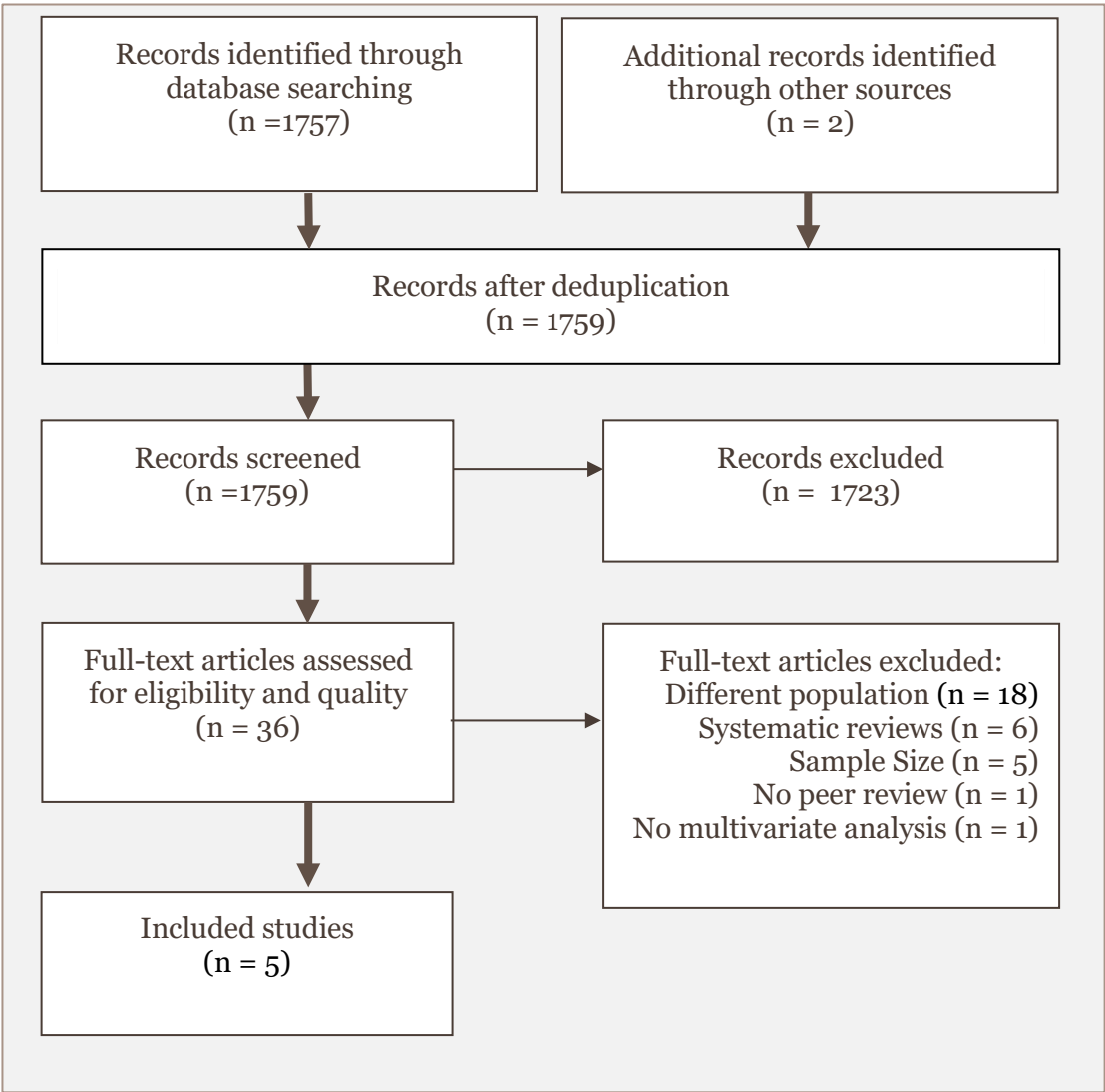
Results

Description of studies

Results of the literature search

We identified 1757 references through the systematic literature searches in MEDLINE and Embase. JH screened all titles and abstracts. We considered 36 references possibly relevant and read these in full text.

Figure 1. PRISMA flow diagram of study inclusion



Following full text screening, 11 studies were discussed with a group of experts determining final inclusion. We included five studies that reported results from multivariate analyses of demographic (e.g. sex, ethnicity, smoking) and medical risk factors (3-7). Two studies were from England (3, 4), one from the UK (7), one from the USA (5), and one from Denmark (6). All studies were published in international peer reviewed journals.

Included studies

We included five studies (Table 1.) and excluded 31 studies (Appendix 2).

Table 1. Included reviews

First author	Study type	Study population	Outcomes reported	Sample size					Covariates included in multivariate model
				Total	COVID - 19 positive*	Severe illness	Hospitalised	Died	
Barron (3) England	Retrospective study	Individuals registered with a general practice	Death (Death in hospital with COVID-19 in the overall population)	61,414,470 individuals in general practice	Unclear	.	.	23,698	Covariates included in multivariate model 1: Age, sex, ethnicity, deprivation, geographic region, coronary heart disease, cerebrovascular disease and heart failure. Multivariate model 2: Age, sex, ethnicity, deprivation, geographic region, and diabetes status
Clift (4) England	Population based cohort study among	Individuals in general practice	1. Death (Death in from COVID-19 either in hospital or outside hospital) 2. Hospitalisation	6,083,102	Unclear	.	10,776	4,384	Covariates included in multivariate model: Age, BMI, deprivation score, residency, ethnicity, kidney disease, cancer, diabetes, lung disease, heart disease, neurologic disease, mental illness, and more. All models were stratified by sex.
Petrilli (5) USA	Prospective cohort study of	Patients in an academic medical centre in New York/Long Island	Hospitalization , severe illness	11,544	5,279	990	2,741	.	Age at time of testing, sex, ethnicity, hypertension, hyperlipidemia, coronary artery disease, heart failure, pulmonary disease, malignancy, diabetes, obesity
Reilev (6) Denmark	Cohort study	Nationwide cohort tested for COVID-19	Severe illness, hospitalization death	410,697	11,122	314	2,254	577	Age, sex, chronic lung disease, hypertension, ischaemic heart disease, heart failure, atrial fibrillation, stroke, diabetes, dementia, cancer, chronic liver disease, kidney disease, alcohol abuse, substance abuse, major psychiatric disorders, organ transplantation, overweight/obesity, and/or rheumatoid arthritis/connective-tissue disease. (Only provided descriptive information for ICU outcome)
Williamson (7) UK	Cohort registry study	Primary care patients	Death	17,278,392	.	.	.	10,926	Age, sex, BMI, smoking, IMD, hypertension/high blood pressure, asthma, chronic heart disease, diabetes, non-haematological cancer, haematological malignancy, reduced kidney function, liver disease, stroke or dementia, other neurological disease, organ transplant, asplenia, rheumatoid arthritis, lupus or psoriasis, other immunosuppressive condition.

We distinguish between studies that explore risk factors associated with

- (i) need for hospitalisation due to COVID-19 (N=3)(4-6),
- (ii) development of more severe /critical COVID-19 (N=2) (5, 6), and
- (iii) death due to COVID-19 (N=5) (3-7)

Quality assessment

We performed quality assessment of included studies with the Newcastle–Ottawa Scale (NOS) for cohort studies (4-7) and case-control studies (3) (Table 2.) The NOS assesses methodological quality relating to three aspects of a study (Selection, Comparability and Outcome) and categorises studies as being of good, fair or poor methodological quality, based on level of fulfilment for each of the three criteria (maximum score is 9 points). We set no cut-off for included studies by total quality score.

Table 2. Newcastle–Ottawa Scale quality assessment

First author	Selection				Comparability	Outcome			Total score
	1	2	3	4	5	6	7	8	
Barron	1(a)	1(a)	1(a)	1(a)	2(a,b)	1(b)	1(a)	1(a)	9
Clift	1(b)	1(a)	1(a)	1(a)	2(a,b)	1(b)	1(a)	1(a)	9
Petrilli	1(b)	1(a)	1(a)	1(a)	2(a,b)	1(b)	1(a)	1(a)	9
Reilev	1(b)	1(a)	1(a)	1(a)	2(a,b)/0 ⁱ	1(b)	1(a)	1(a)	9/7 ⁱ
Williamson	1(b)	1(a)	1(a)	1(a)	2(a,b)	1(b)	1(a)	1(b)	9

ⁱ For ICU admission outcome, only descriptive information was provided in text

Risk factors for need for hospitalisation due to COVID-19

Brief summary: Three studies (4-6) assessed risk factors for need for hospitalisation due to COVID-19. All studies provided a granular overview of predicting factors. Results are listed side by side in Table 3. Overall, age, comorbidities and severity of disease were found to be strong predictors of hospital admission. Heart failure, kidney disease, diabetes, Down syndrome and ongoing chemotherapy is reported to have an especially high risk. Some evidence suggests that sex and ethnicity is associated with increased risk of hospital admission (4, 5).

Clift et al (4) reported characteristics of hospitalisation in a nationwide cohort comprising 1205 general practices in England with linkage to COVID-19 test results, Hospital Episode Statistics, and death registry data. The results in detail, based on 10776 admitted COVID-19 cases in the study period January 24th to April 30th, 2020 are presented in Table 3 stratified by sex. Hospital admission was defined as an ICD-10 code for either confirmed or suspected COVID-19, or new hospital admission associated with a confirmed SARS-CoV-2 infection in the study period. The authors report increased risk for all ethnicities compared to non-Hispanic whites, and most of the assessed comorbidities. Interestingly, the adjusted hazard ratios for body mass index, age, and the interaction between age and type 2 diabetes for hospital admissions due to COVID-19 showed higher risks associated with younger ages (Figure A, B in supplementary table of original study). The authors found the highest risk for populations undergoing chemotherapy, followed by individuals suffering from severe kidney disease.

The authors point out that no systematic community testing was performed and that only those unwell enough to attend hospital were tested. This, they conclude would overestimate risks of severe outcomes in those who tested positive.

Petrilli et al (5) investigated risk factors associated with admission to hospital based on a prospective cohort study with 5279 confirmed COVID-19 cases in New York City, USA, between March 1st, 2020 and April 8th, 2020, with complete follow-up through May 5th. 2741 participants were admitted to hospital, of whom 1904 were discharged alive without hospice care and 665 were discharged to hospice care or died. The strongest risk factor for hospital admission was age, with an OR of >2 for all age groups older than 44 years and OR 37.9 (95% confidence interval 26.1 to 56.0) for ages 75 years and older. Other risk factors were heart failure (OR 4.4, 2.6 to 8.0), male sex (OR 2.8, 2.4 to 3.2), chronic kidney disease (OR 2.6, 1.9 to 3.6), and BMI above normal weight range (e.g., for BMI >40: OR 2.5, 1.8 to 3.4). Petrilli et al also found a reduced OR for current and former smokers but increased OR for those with unknown smoking status (15% of participants). Detailed findings are listed in table 3, side by side with other relevant studies.

The authors point out that data on patients not admitted to hospital were more limited and might not have had reported a less detailed medical history. In addition, this limitation may have been further exacerbated by that patients treated and discharged from the emergency department were not commonly tested and thus omitted from analysis unless later admitted to the hospital. As this was a single centre study, some not admitted patients might have been admitted to other institutions, and some discharged patients might have been readmitted elsewhere with critical illness or could have died post-discharge.

Reilev et al (6) reports characteristics of hospital admissions in a nationwide cohort comprising 11 122 confirmed COVID-19 cases in Denmark starting February 7th, 2020 until May 19th, 2020. In general, the authors observed only minor differences in age, sex, medical history and prior drug use between PCR positive cases and test-negative individuals. Among all PCR-positive

cases, the median age was 48 years. Eighty percent of the PCR positive cases were community-managed and 20% were hospitalised, with more than 60% among cases hospitalised being older than 70 years. Twenty-two percent of those who died were managed in the community. Fifteen percent of community-managed cases had two or more comorbidities, whereas the corresponding proportion was 56% for hospitalised cases. The majority of hospitalised cases were admitted on the date of the positive PCR test (57%). The strongest predictors for hospital admission were age and number of comorbidities. Most major chronic diseases were associated with hospitalisation, with ORs ranging from 1.3–1.4 (e.g. stroke, ischaemic heart disease) to 2.6–3.4 (e.g. heart failure, hospital-diagnosed kidney disease, organ transplantation). Detailed findings are listed in table 3, side by side with other relevant studies.

The authors point out that test strategy in Denmark was initially directed at those who were most sick and potentially in need of medical care. This test strategy may have contributed to an overestimation of the case fatality and the proportion of hospitalised cases. They also report a strict, early lockdown with hospital capacity never being overwhelmed. The communicated seriousness and ease of healthcare access might also have influenced patients to present early, and a low threshold for admittance.

Across the studies, trends are apparent. However, due to the heterogeneity between studies in relation to study designs, risk factor definitions, data analysis and –reporting, we stress that there are uncertainties in direct comparisons of results between included studies.

Two studies showed a clear dose response relationship between increasing age and risk of hospital admission (5, 6). Two studies reported an increased adjusted HR/OR for hospital admission in men and for people overweight and obese (5, 6). Based on two studies, the majority of non-whites were at increased risk of admission. Three studies (4-6) provided a granular overview of adjusted HRs/ORs for a broad selection of comorbidities, conditions and ongoing treatments. Most of these were associated with a greater risk for admission, with apparent increases in risk based on severity of condition. One study (6) reported increasing risk by number of co-existing comorbidities. Severe kidney disease, diabetes type I, ongoing chemotherapy, severe immunodeficiency, heart failure, and Down syndrome stand out with a greater associated risk of hospital admission (OR/HR ≥ 3).

Table 3. Studies assessing risk factors predicting hospitalisation due to COVID-19; overview of reported findings by author, significant values greater-than-or-equal 3 are marked red, values greater-than-or-equal 2 are marked orange, all significant findings below 2 are bold black. Non-significant findings are one font size smaller.

Author	Clift	Petrilli	Reilev
Country	England	US	Denmark
Participants	6,083,102	11,544	410,697
COVID-19 admitted	10,776	2,741	11,122
Testing method	PCR	PCR	PCR
Statistic	Adjusted hazard ratio (95% CI)	Adjusted odds ratio (95% CI)	Adjusted odds ratio (95% CI)
Participants sex	men women	mixed	mixed
Age		reference	
19-44			
20-39			OR 0.4 (0.3-0.5) ¹
40-49			OR 0.6 (0.5-0.8) ¹
50-59			reference
45-54		OR 2.14 (1.76 to 2.59) ^{***}	
60-69			OR 1.6 (1.3-1.9) ¹
55-64		OR 3.67 (3.01 to 4.48) ^{***}	
70-79			OR 4.7 (3.9-5.7) ¹
65-74		OR 8.7 (8.77 to 11.22) ^{***}	
> 75		OR 37.87 (26.1 to 56.03) ^{***}	
80-89			OR 4.8 (3.9-5.8) ¹
> 90			OR 3.5 (2.6-4.7) ¹
Sex			
male		OR 2.76 (2.39 to 3.2) ^{***}	OR 1.8 (1.6-2.0) ¹
Race/ ethnicity			
non-Hispanic white	reference	reference	
non-Hispanic African American		OR 0.81 (0.65 to 1.01)	
Asian		OR 1.29 (0.97 to 1.72)	
Blacks	HR 2.59 (2.27 to 2.97)	HR 2.30 (1.97 to 2.68)	
Indian	HR 2.15 (1.89 to 2.44)	HR 1.89 (1.60 to 2.24)	
Chinese	HR 1.51 (1.03 to 2.20)	HR 1.15 (0.71 to 1.85)	
Pakistani	HR 2.01 (1.72 to 2.36)	HR 1.52 (1.21 to 1.89)	
Bangladeshi:	HR 1.71 (1.41 to 2.08)	HR 1.41 (1.11 to 1.79)	
Asian (other)	HR 2.29 (1.91 to 2.74)	HR 2.14 (1.74 to 2.64)	
Hispanic		OR 1.63 (1.35 to 1.97) ^{***}	
other/multiracial	HR: 2.12 (1.83 to 2.46)	HR 1.90 (1.64 to 2.21)	OR 1.6 (1.21 to 2.11) ^{***}
unknown		OR 0.89 (0.65 to 1.23)	
Comorbidities			
0 comorbidity			reference
1 comorbidity			OR 1.7 (1.5-2.0) ²
2 comorbidities			OR 2.1 (1.8-2.5) ²
3 comorbidities			OR 3.1 (2.5-3.8) ²
4+ comorbidities			OR 3.9 (3.2-4.8) ²
Cardiovascular			
Heart failure	HR 1.33 (1.21 to 1.46)	HR 1.38 (1.23 to 1.55)	OR 4.43 (2.59 to 8.04) ^{***}
CAD /CHD /IHD	HR 1.06 (0.99 to 1.14)	HR 1.11 (1.02 to 1.22)	OR 1.08 (0.81 to 1.44)
Atrial fibrillation	HR 1.19 (1.10 to 1.29)	HR 1.34 (1.22 to 1.47)	
Thrombo-embolism	HR 1.30 (1.17 to 1.44)	HR 1.34 (1.21 to 1.50)	OR 1.4 (1.2-1.7) ²
Peripheral vascular disease	HR 1.27 (1.13 to 1.42)	HR 1.21 (1.03 to 1.44)	
Congenital heart disease	HR 0.97 (0.75 to 1.25)	HR 0.97 (0.75 to 1.25)	
Hypertension			OR 1.78 (1.49 to 2.12) ^{***}
Stroke	HR 1.31 (1.20 to 1.42)	HR 1.39 (1.27 to 1.53)	OR 1.7 (1.5-1.9) ²
Hyperlipidaemia			OR 0.62 (0.52 to 0.74)
Kidney			
chronic kidney disease/ Hospital-diagnosed kidney disease			OR 2.6 (1.89 to 3.61) ^{***}
Chronic kidney disease stage 3	HR 1.28 (1.19 to 1.38)	HR 1.35 (1.25 to 1.46)	
Chronic kidney disease stage 4	HR 2.00 (1.67 to 2.39)	HR 1.79 (1.48 to 2.17)	
Chronic kidney disease stage 5	HR 3.86 (3.25 to 4.58)	HR 4.17 (3.39 to 5.12)	
Chronic kidney disease stage 5 with dialysis	HR 5.90 (4.22 to 8.25)	HR 3.72 (2.06 to 6.75)	
Chronic kidney disease stage 5 with transplant	HR 7.09 (5.30 to 9.47)	HR 5.54 (3.55 to 8.67)	
Liver			
Chronic liver disease			OR 2.3 (1.6-3.3) ²
Cirrhosis of the liver	HR: 1.88 (1.46 to 2.41)	HR 1.83 (1.35 to 2.49)	
Pulmonary			
Pulmonary disease (chronic obstructive pulmonary disease or asthma)			OR 1.08 (0.88 to 1.33)
COPD	HR: 1.36 (1.25 to 1.49)	HR 1.34 (1.21 to 1.49)	
Asthma	HR: 1.10 (1.02 to 1.19)	HR 1.12 (1.04 to 1.21)	
Rare lung conditions (bronchiectasis, cystic fibrosis, or alveolitis)	HR 1.28 (1.06 to 1.55)	HR 1.28 (1.06 to 1.55)	
Pulmonary hypertension or pulmonary fibrosis	HR 1.56 (1.12 to 2.17)	HR 1.56 (1.12 to 2.17)	
Endocrine			
Diabetes			OR 2.24 (1.84 to 2.73) ^{***}
DM1	HR: 3.66 (2.90 to 4.62)	HR 4.03 (3.12 to 5.22)	
DM2	HR: 2.57 (2.27 to 2.91)	HR 2.64 (2.27 to 3.07)	
Any insulin use			OR 2.3 (1.7-3.0) ²
Non-insulin glucose-lowering-drug use			OR 1.7 (1.4-2.1) ²
Insulin monotherapy use			OR 2.4 (1.5-3.6) ²

Neurological, mental				
Dementia	HR: 2.12 (1.92 to 2.34)	HR 1.73 (1.56 to 1.92)		OR 0.5 (0.4–0.7) ²
Severe mental illness	HR: 1.28 (1.19 to 1.38)	HR 1.37 (1.28 to 1.47)		
Major psychiatric disorder				OR 2.1 (1.2–3.7) ²
Major psychiatric disorder, Benzodiazepines and derivate use				OR 1.7 (1.4–2.1) ²
Major psychiatric disorder, Antipsychotic use				OR 1.5 (1.1–1.9) ²
Major psychiatric disorder, Antidepressant use				OR 1.3 (1.1–1.5) ²
Motor neurone disease, multiple sclerosis, myasthenia gravis, or Huntington's	HR 2.47 (1.90 to 3.22)	HR 2.47 (1.90 to 3.22)		
Cerebral palsy	HR 2.66 (1.42 to 4.98)	HR 2.66 (1.42 to 4.98)		
Epilepsy	HR 1.57 (1.33 to 1.86)	HR 1.57 (1.33 to 1.86)		
Parkinson	HR 1.70 (1.32 to 2.18)	HR 1.70 (1.32 to 2.18)		
No learning disability	ref			
Learning disability apart from Down's Syndrome	HR 1.38 (1.22 to 1.56)	HR 1.53 (1.34 to 1.76)		
Down's syndrome	HR 4.36 (2.39 to 7.94)	HR 4.36 (2.39 to 7.94)		
Other				
Organ transplantation				OR 3.4 (1.7–6.6) ²
Solid organ transplant (excluding kidney and bone marrow)	HR: 2.02 (1.27 to 3.21)	HR 1.57 (0.80 to 3.05)		
Rheumatoid arthritis				OR 1.5 (1.1–1.9) ²
Rheumatoid arthritis or SLE (Lupus)	HR: 1.30 (1.07 to 1.57)	HR 1.35 (1.17 to 1.56)	OR 0.88 (0.65 to 1.19)	OR 1.4 (1.2–1.6) ²
Malignancy				
Blood cancer	HR: 1.29 (1.05 to 1.57)	HR 1.40 (1.10 to 1.78)		
Respiratory tract cancer	HR: 1.44 (1.14 to 1.83)	HR 1.65 (1.25 to 2.17)		
Not on chemotherapy in last 12 months	reference	reference		
Chemotherapy grade A	HR 1.72 (1.24 to 2.37)	HR 2.11 (1.48 to 3.01)		
Chemotherapy grade B	HR 3.64 (2.95 to 4.49)	HR 4.19 (3.28 to 5.37)		
Chemotherapy grade C	HR 4.11 (2.20 to 7.68)	HR 15.53 (8.36 to 28.85)		
Sickle cell disease or severe immunodeficiency	HR: 4.87 (2.67 to 8.87)	HR 6.68 (4.06 to 10.97)		
Oral steroids 4+ scripts in past 6 months	HR 1.42 (1.25 to 1.62)	HR 1.92 (1.71 to 2.17)		
BMI				
< 25			reference	
> 25 / 25 - 29.9 (Overweight)			OR 1.3 (1.07 to 1.57)**	
> 30			OR 1.8 (1.47 to 2.2)***	OR 2.1 (1.8–2.5) ² (Based on ICD code for overweight)
>40 / ≥40 (Obese class III)			OR 2.45 (1.78 to 3.36)***	
unknown			OR 0.47 (0.31 to 0.69)***	
Smoking/ Substance abuse				
Never smoker			reference	
Current smoker			OR 0.59 (0.43 to 0.81)**	
Former smoker			OR 0.69 (0.56 to 0.85)***	
Unknown smoking status			OR 1.43 (1.16 to 1.75)***	
Alcohol abuse				OR 1.7 (1.3–2.3) ²
Substance abuse				OR 1.3 (0.9–1.9) ²
Explanatory information	Adjusted for variables shown, deprivation, and fractional polynomial terms for body mass index (BMI) and age. Model includes fractional polynomial terms for age (3 3) and BMI (0.5 0.5 ln (bmi)) and interaction terms between age terms and type 2 diabetes.		Pvalue: *** = p<0.001; ** = p<0.01, * = p<0.05	¹ = Age-, sex- and number of comorbidities adjusted OR (95% CI), table 4 in supplementary files of original study; ² = Age and sex-adjusted OR (95% CI);

Risk factors for severe illness, including ICU admission, due to COVID-19

Brief summary: Two studies (5, 6) assessed risk factors in relation to ICU admissions, but information on ICU admission alone was provided by just one study and only with descriptive information (6). Therefore, we included severe illness in this outcome group, as Petrilli et al defined this as a composite measure including ICU admissions. Overall, increasing age, male sex, morbid obesity, heart failure, diabetes and unknown smoking status was associated with increased risk for severe illness. Being of non-Hispanic African American descent was associated with decreased risk of severe illness. A dose response relationship between increasing age and increasing risk of severe illness was observed.

Reilev et al (6) report on characteristics of ICU admissions in a nationwide cohort comprising 11,122 confirmed COVID-19 cases in Denmark in the period February 7th, 2020 until May 19th, 2020. Compared to non-ICU participants, ICU admitted participants (2.8%) were comprised of a higher ratio of men (73%) to women (27%) (non-ICU: men (51%), women (49%)) and were slightly younger (median 68 (interquartile range(IQR) 58–75)) (non-ICU: median 72 (IQR 55–81)). Compared to fatal cases (5.2%), non-fatal cases admitted to the ICU were younger and presented with fewer comorbidities. The authors argue this might be due to ICU prioritisation of patients with better outcome prospects if provided with intensive care treatment, for example ventilation.

Petrilli et al (5) investigated risk factors associated with critical illness based on a prospective cohort study with 5279 confirmed COVID-19 cases in New York City, USA, between March 1st, 2020 and April 8th, 2020. They defined critical illness as a composite measure incorporating ICU admission, use of mechanical ventilation, discharge to hospice or death. In their fully adjusted models, they report increased risk of severe illness for age, with a 2-fold increase in risk for age groups 55-64 years, 3-fold increase for ages 65-74, and almost 3.5-fold increase for those aged ≥ 75 . For morbid obesity and unknown smoking status they report about a 50% increase in risk, and almost a 1-fold increased risk associated with heart failure. The authors state that overall, risk of severe illness decreased across the study period. For details on reported risk factors, see Table 4.

Table 4. Studies assessing risk factors predicting development of severe illnessⁱ due to COVID-19; overview of reported findings by author, significant values greater-than-or-equal 3 are marked red, values greater-than-or-equal 2 are marked orange, all significant findings below 2 are bold black. Non-significant findings are one font size smaller.

Author	Petrilli
Country	US
Participants	11,544
Testing method	PCR
COVID-19 admitted	2,741
Statistic	Adjusted odds ratio (95% CI)
Participants sex	Mixed
Age	
19-44	reference
45-54	OR 1.12 (0.80 to 1.6)
55-64	OR 2.04 (1.50 to 2.8)***
65-74	OR 2.88 (2.09 to 4.0)***
≥75	OR 3.46 (2.46 to 4.8)***
Male sex	OR 1.54 (1.29 to 1.8)***
Ethnicity	
non-Hispanic white	reference
non-Hispanic African American	OR 0.67 (0.51 to 0.9)**
Asian	OR 1.30 (0.92 to 1.8)
Hispanic	OR 0.93 (0.74 to 1.2)
Other/multiracial	OR 1.15 (0.84 to 1.6)
Unknown	OR 1.23 (0.80 to 1.9)
BMI	
18.5-24.9 (Normal weight)	reference
30 -34.9 (Obese class I)	OR 0.86 (0.69 to 1.1)
35-39.9 (Obese class II)	OR 0.98 (0.77 to 1.2)
≥40 (Obese class III)	OR 1.52 (1.04 to 2.2)*
Unknown	OR 0.80 (0.46 to 1.4)
Coronary artery disease	OR 0.96 (0.77 to 1.2)
Heart failure	OR 1.88 (1.43 to 2.5)***
Hyperlipidaemia	OR 0.94 (0.77 to 1.1)
Hypertension	OR 0.96 (0.77 to 1.2)
Diabetes	OR 1.24 (1.03 to 1.5)*
Asthma or COPD	OR 0.89 (0.70 to 1.1)
Chronic kidney disease	OR 1.07 (0.85 to 1.3)
Cancer	OR 1.23 (0.95 to 1.6)
Smoking	
Never	reference
Former	OR 1.06 (0.85 to 1.3)
Current	OR 0.77 (0.52 to 1.2)
Unknown	OR 1.52 (1.19 to 1.9)**

ⁱ Definition of severe illness: care in the intensive care unit, use of mechanical ventilation, discharge to hospice, or death

ⁱⁱ P-value: *** = p<0.001; ** = p<0.01; * = p<0.05

Risk factors for death due to COVID-19

Brief summary: Four studies assessed risk factors for death due to COVID-19 (3, 4, 6, 7). All studies provided a granular overview of predicting factors. Results are summarised side by side in Table 5. Overall, increasing age was found to be the strongest predictor of death due to COVID-19. Furthermore, male sex, ethnicity, most comorbidities, increasing severity and number of comorbidities were found to be significant predictors of COVID-19-related death.

Barron et al (3) performed a whole-population study assessing risks of COVID-19 related in-hospital death between March 1st and May 11th, 2020. The authors included 61,414,470 individuals registered with a general practice in England who were alive on Feb 16, 2020. They used multivariable logistic regression to examine the effect of diabetes status, by type, on in-hospital COVID-19 related death, adjusting for demographic factors and cardiovascular comorbidities. 0.4% had a recorded diagnosis of type 1 diabetes, 4.7% type 2 diabetes and 0.1% another types of diabetes. 23 698 COVID-19 related in-hospital deaths occurred during the study period, where 7434 deaths, about one third, occurred in people with type 2 diabetes, 364 with type 1 diabetes, and 69 in people with other types of diabetes. Adjusted for age, sex, index of multiple deprivation, ethnicity and region, the OR for death in people with type 1 diabetes was 3.51 (95% CI 3.16–3.90) and for people with type 2 diabetes 2.03 (1.97–2.09) compared with the population without known diabetes. A limitation with this study is that the registration of death was limited to in-hospital occurrences. The authors were also limited in their ability to adjust for other comorbidities because of limitations in the datasets used and available.

Clift et al (4) report on characteristics related to death due to COVID-19 in a nationwide cohort comprising 1205 general practices in England with linkage to COVID-19 test results, Hospital Episode Statistics, and death registry data. The practices were randomly assigned to a derivation dataset and to a validation cohort. The validation cohort provided a basis for two calibrations of the risk models over different periods. The results in detail, based on 4384 deaths of the derivation cohort, are presented by sex in Table 5. Their primary outcome was time to death from COVID-19 (either in hospital or outside hospital), defined as confirmed or suspected death from COVID-19 as per the death certification or death occurring in an individual with confirmed SARS-CoV-2 infection at any time in the period 24 January to 30 April 2020. Their findings show increased hazard ratios for all non-white males, and most of the investigated comorbidities. Interestingly, the adjusted hazard ratios for body mass index, age, and the interaction between age and type 2 diabetes for deaths due to COVID-19 showed higher risks associated with younger ages. The highest risk was identified in individuals with Down syndrome, with a HR of 2.55 (18.13-58.42) in women and HR 9.80 (4.62-20.78) in men.

The authors point out that no systematic community testing was performed and that only those unwell enough to attend hospital were tested. This, they conclude would overestimate risks of severe outcomes in those who tested positive.

Reilev et al (6) investigated risk factors for death due to COVID-19 in a nationwide cohort comprising 11 122 confirmed COVID-19 cases in Denmark in the period February 7th, 2020 until May 19th, 2020. During this period there were 577 COVID-19-related deaths registered. They report a mortality rate of below 5% for persons under 80 years of age without any comorbidities, while almost 4 out of 5 fatal cases had two or more co-morbidities. The strongest predictor for death was age, with a clear dose response relationship, with odds of death being 4.4 times greater for age group 60-69 compared to the reference group (50-59), and the odds of death for those 90 years old and above being 90 times greater than the reference group. Weaker,

but still significant, findings were reported for male sex (OR 1.94 (1.89–1.99)), dementia (OR 1.7 (1.3–2.2)) and major psychiatric disorders (OR 1.5–3)).

Williamson et al (7) investigated risk factors for COVID-19-related death in a retrospective registry study of 17 278 392 adults in the UK. 10 926 COVID-19-related deaths were included. Highest risks were found for high age (70–79: HR 6.07 (5.51–6.69), >80: HR 20.60 (18.70–22.68)), organ transplantation (HR 3.53 (2.77–4.49)), blood cancer diagnosed less than one year ago (HR 2.80 (2.08–3.78)), neurological disorders (HR 2.58 (2.38–2.79)) and kidney disease (HR 2.52 (2.33–2.72)). Increased risk was also seen for male sex (HR 1.59 (1.53–1.65)), ethnicities other than white (HR 1.3–1.5), diabetes (HR 1.90 (1.72–2.09)), chronic liver disease (HR 1.75 (1.51–2.03)), obesity (BMI 35–39.9 HR 1.40 (1.30–1.52), BMI \geq 40 HR 1.92 (1.72–2.13)) and deprivation score (HR 1.79 (1.68–1.91) for most deprived). The authors found a lower risk associated with current smoking status (HR: 0.89 (0.82–0.97)), but the association was found to be largely driven by chronic respiratory disease, of which smoking is a key risk factor. The authors highlight that these findings need to be evaluated with caution. For more details on reported results, see Table 5.

Across the studies, trends are apparent. These trends need to be interpreted with caution due to heterogeneity in study designs, selected predicting factors, data analysis and data reporting. All studies assessing age as a predictor found it to be a consistent and strong risk factor for death with a steep and continuous increase in risk with increasing age. Ethnicity other than white was also consistently, but more modestly, associated with increased risk of death, with Blacks having the highest risk of death. Two studies (3, 7) found increasing risk of death with increasing degree of deprivation (measure by Indices of multiple deprivation (IMD)). Most medical risk factors investigated are associated with higher risk of death, with increasing numbers and severity of comorbidities increasing the risk for death further. Of the medical risk factors, severe kidney disease, diabetes mellitus type I and II, dementia, ongoing chemotherapy, organ transplant patients, severe immunodeficiency, major psychiatric disorder with antipsychotic treatment, cerebral palsy and Down syndrome is associated with the highest risk of death (OR/HR \geq 3). Williamson et al found increasing risk with increasing BMI above normal weight, this was not found by Reilev et al for patients with medical overweight.

Table 5. Studies assessing risk factors predicting death due to COVID-19; overview of reported findings by author, significant values greater-than-or-equal 3 are marked red, values greater-than-or-equal 2 are marked orange, all significant findings below 2 are bold black. Non-significant findings are one font size smaller.

Author	Williamson	Cliff	Barron	Reilev
Country	UK	England	England	Denmark
Participants	17,278,392	6,083,102	61,414,470	410,697
Testing method	ICD U071 or U072	PCR	Positive test or COVID-19 registered as cause of death	PCR
COVID-19 admitted		10776		11122
COVID-19 deaths	10,926	4,384	23698 in-hospital	577 (5.2%)
Statistic	Adjusted hazard ratio (95 % CI)	Adjusted hazard ratio (95 % CI)		Adjusted odds ratio (95 % CI)
Participants sex	mixed	men	women	mixed
Age				
0-39				OR 0.01 (0.01-0.01)
18-39	HR 0.06 (0.04-0.08)			
40-49	HR 0.30 (0.25-0.36)			OR 0.11 (0.10-0.12)
50-59	reference			OR 0.36 (0.34-0.39)
60-69	HR 2.40 (2.16-2.66)			reference
70-79	HR 6.07 (5.51-6.69)			OR 4.4 (2.5-7.9)²
>80	HR 20.60 (18.70-22.68)			OR 15.2 (8.7-26.3)²
80-89				OR 29.9 (17.2-51.9)²
> 90				OR 90.2 (50.2-162.2)²
Sex				
male	HR 1.59 (1.53-1.65)			OR 1.94 (1.89-1.99)
Number of comorbidities				
0				reference
1				2.6 (1.6-4.0)²
2				2.6 (1.7-4.1)²
3				3.5 (2.2-5.4)²
+4				5.2 (3.4-8.0)²
Index of multiple deprivation quintile				
1	HR 1.79 (1.68-1.91)			OR 1.88 (1.80-1.96)
2	HR 1.51 (1.42-1.61)			OR 1.53 (1.47-1.60)
3	HR 1.22 (1.15-1.30)			OR 1.25 (1.20-1.31)
4	HR 1.12 (1.05-1.19)			OR 1.14 (1.09-1.19)
5 (least deprived)	reference			reference
Race/ ethnicity				
non-Hispanic white	reference	reference	reference	reference
Black	HR 1.48 (1.29-1.69)	HR 3.03 (2.42-3.80)	HR 1.98 (1.39-2.83)	OR 1.71 (1.61-1.82)
Asian	HR 1.45 (1.32-1.58)			OR 1.35 (1.28-1.42)
Indian		HR 1.59 (1.25-2.01)	HR 1.89 (1.43-2.51)	
Chinese		HR 2.47 (1.49-4.09)	HR 1.21 (0.51-2.90)	
Pakistani		HR 1.84 (1.39-2.44)	HR 1.40 (0.91-2.14)	
Bangladeshi		HR 2.27 (1.65-3.12)	HR 1.41 (0.88-2.26)	
Asian (other)		HR 2.02 (1.49-2.74)	HR 1.19 (0.72-1.97)	
other/multiracial	HR 1.43 (1.11-1.84)	HR 2.04 (1.60-2.58)	HR 1.73 (1.28-2.35)	OR 1.43 (1.23-1.67)
other	HR 1.33 (1.10-1.61)			
unknown				OR 0.33 (0.31-0.35)
Cardiovascular				
Heart failure		HR 1.40 (1.24-1.59)	HR 1.37 (1.18-1.60)	OR 1.1 (0.8-1.5) ¹
CAD /CHD /IHD	HR 1.17 (1.12-1.22)	HR 1.13 (1.02-1.24)	HR 1.24 (1.10-1.40)	OR 0.7 (0.5-0.9) ¹
Atrial fibrillation		HR 1.11 (1.00-1.24)	HR 1.18 (1.04-1.34)	OR 1.1 (0.8-1.4) ¹
Thrombo-embolism		HR 1.18 (1.01-1.38)	HR 1.18 (1.01-1.38)	
Peripheral vascular disease		HR 1.42 (1.15-1.76)	HR 1.42 (1.15-1.76)	
Congenital heart disease		HR 1.23 (0.75-2.03)	HR 1.23 (0.75-2.03)	
Hypertension	HR 0.89 (0.85-0.93)			OR 0.6 (0.5-0.8) ¹
Stroke		HR 1.24 (1.11-1.38)	HR 1.34 (1.19-1.51)	OR 1.0 (0.8-1.3) ¹
Stroke or dementia	HR 2.16 (2.06-2.27)			
Kidney				
Chronic kidney disease				OR 1.3 (0.9-1.8) ¹
Kidney disease, eGFR 30-60	HR 1.33 (1.28-1.40)			
Kidney disease, eGFR < 30	HR 2.52 (2.33-2.72)			
Chronic kidney disease stage 3		HR 1.18 (1.06-1.30)	HR 1.30 (1.17-1.45)	
Chronic kidney disease stage 4		HR 1.83 (1.46-2.29)	HR 1.37 (1.05-1.80)	
Chronic kidney disease stage 5		HR 2.40 (1.83-3.15)	HR 3.00 (2.19-4.12)	
Chronic kidney disease stage 5 with dialysis		HR 2.68 (0.86-8.36)	HR 3.67 (2.02-6.66)	
Chronic kidney disease stage 5 with transplant		HR 3.20 (1.62-6.33)	HR 7.84 (3.38-18.17)	
Spleen				
Asplenia	HR 1.34 (0.98-1.83)			
Liver				
Chronic liver disease	HR 1.75 (1.51-2.03)			OR 1.2 (0.7-2.3) ¹
Cirrhosis of the liver		HR 1.29 (0.83-2.02)	HR 1.85 (1.15 to 2.99)	
Pulmonary				
Pulmonary disease (COPD or asthma)				OR 1.1 (0.8-1.4) ¹
Respiratory disease excluding asthma	HR 1.63 (1.55-1.71)			
COPD		HR 1.25 (1.11-1.42)	HR 1.50 (1.29-1.74)	
Asthma		HR 1.03 (0.91-1.17)	HR 0.84 (0.73-0.97)	
Asthma with no recent OCS use	HR 0.99 (0.93-1.05)			
Asthma with recent OCS use	HR 1.13 (1.01-1.26)			
Rare lung conditions (bronchiectasis, cystic fibrosis, or alveolitis)		HR 0.85 (0.60-1.19)	HR 0.85 (0.60-1.19)	
Pulmonary hypertension or pulmonary fibrosis		HR 1.55 (1.00-2.40)	HR 1.55 (1.00-2.40)	

Endocrine				
Diabetes				OR 1.1 (0.8-1.4) ¹
DM type 1	HR 5.84 (3.97-8.60)	HR 4.02 (2.07-7.82)	OR 3.51 (3.16-3.90)	
DM Type 2 (at mean age)	HR 4.74 (3.34-6.71)	HR 6.29 (4.08-9.70)	OR 2.03 (1.97-2.09)	
Other Diabetes			OR 2.14 (1.69-2.71)	
With HbA1c < 58 mmol/mol	HR 1.31 (1.24-1.37)			
With HbA1c ≥ 58 mmol/mol	HR 1.95 (1.83-2.08)			
With no recent HbA1c measure	HR 1.90 (1.72-2.09)			
Diabetes, Non-insulin glucose lowering drugs				OR 1.0 (0.7-1.3) ¹
Diabetes, Insulin				OR 1.3 (0.9-1.8) ¹
Diabetes, Insulin monotherapy				OR 1.0 (0.6-1.7) ¹
Neurological, mental				
No learning disability	reference	reference		
Learning disability apart from Down's syndrome	HR 1.36 (1.14-1.60)	HR 1.36 (1.11-1.65)		
Down's syndrome	HR 9.80 (4.62-20.78)	HR 32.55 (18.13-58.42)		
Parkinsons disease	HR 1.13 (0.79-1.62)	HR 1.13 (0.79-1.62)		
Dementia	HR 3.14 (2.81-3.50)	HR 2.91 (2.58-3.28)		OR 1.7 (1.3-2.2)¹
Epilepsy	HR 1.58 (1.23-2.03)	HR 1.58 (1.23-2.03)		
Motor neurone disease, multiple sclerosis, myaesthesia gravis, or Huntington's	HR 1.99 (1.24-3.18)	HR 2.75 (1.83-4.12)		
Cerebral Palsy	HR 3.45 (1.10-10.78)	HR 3.45 (1.10-10.78)		
Severe mental illness	HR 1.26 (1.13-1.42)	HR 1.29 (1.15-1.45)		
Major psychiatric disorder				OR 1.9 (0.9-3.9) ¹
Major psychiatric disorder, Benzodiazepines and derivates				OR 1.8 (1.4-2.4)¹
Major psychiatric disorder, Antipsychotics				OR 3.0 (2.1-4.2)¹
Major psychiatric disorder, Antidepressants				OR 1.5 (1.2-1.9)¹
Neurological disorders often with compromised respiratory function (MND, MG/MS, Parkinsons, CP etc)	HR: 2.58 (2.38-2.79)			
Other neurological disease	HR 2.58 (2.38-2.79)			
Other				
Organ transplantation	HR 3.53 (2.77-4.49)			OR 2.0 (0.8-5.1) ¹
Solid organ transplant (excluding kidney and bone marrow)	HR 1.46 (0.36-5.92)	HR 1.46 (0.36- 5.92)		
Rheumatoid arthritis/	HR 1.02 (0.75-1.38)	HR 1.32 (1.06-1.65)		OR 0.9 (0.6-1.3) ¹
Rheumatoid arthritis, lupus or psoriasis	HR 1.19 (1.11-1.27)			
Sickle cell disease or severe immunodeficiency	HR 4.41 (1.41-13.81)	HR 5.94 (1.89-18.67)		
Other immunosuppressive condition	HR 2.21 (1.68-2.90)			
Oral steroids 4+ scripts in past 6 months	HR 1.44 (1.19-1.73)	HR 1.83 (1.52-2.19)		
Bone marrow or stem cell transplant in past 6 months	HR 1.58 (0.95-2.62)	HR 2.78 (0.22-34.55)		
Cancer				
Malignancy				OR 1.0 (0.8-1.3) ¹
Cancer (non-haematological, versus none), Diagnosed <1 year ago	HR 1.72 (1.50-1.96)			
Cancer (non-haematological, versus none), Diagnosed 1-4.9 years ago	HR 1.15 (1.05-1.27)			
Cancer (non-haematological, versus none), Diagnosed ≥5 years ago	HR 0.96 (0.91-1.03)			
Blood cancer	HR 1.29 (0.97-1.71)	HR 1.50 (1.06-2.12)		
Blood cancer, Diagnosed <1 year ago	HR 2.80 (2.08-3.78)			
Blood cancer, Diagnosed ≥5 years ago	HR 2.46 (2.06-2.95)			
Blood cancer, Diagnosed 1-4.9 years ago	HR 1.61 (1.39-1.87)			
Respiratory tract cancer	HR 1.27 (0.89-1.81)	HR 1.70 (1.16-2.49)		
Radiotherapy in past 6 months	HR 2.09 (1.48-2.96)	HR 2.11 (1.30-3.41)		
Not on chemotherapy in past 12 months	reference	reference		
Chemotherapy grade A	HR 1.74 (1.10-2.75)	HR 2.30 (1.35-3.94)		
Chemotherapy grade B	HR 3.50 (2.54-4.82)	HR 3.52 (2.29-5.42)		
Chemotherapy grade C	HR 3.37 (1.17-9.64)	HR 17.31 (6.52-45.98)		
BMI				
18.5-24.9 (Normal weight)	reference			
30 -34.9 (Obese class I)	HR: 1.05 (1.00-1.11)			OR 1.0 (0.7-1.4) ¹ , defined as medical overweight
35-39.9 (Obese class II)	HR: 1.40 (1.30-1.52)			
≥40 (Obese class III)	HR: 1.92 (1.72-2.13)			
Smoking/ Substance abuse				
Never smoked	reference			
Current smoker	HR: 0.89 (0.82-0.97)			
Former smoker	HR: 1.19 (1.14-1.24)			
Substance abuse				OR 1.3 (0.7-2.2) ¹
Alcohol abuse				OR 1.3 (0.9-2.0) ¹
Explanatory information	Models were adjusted for age using a four-knot cubic spline for age, except for estimation of age-group hazard ratios.	Age, BMI, deprivation score, residency, ethnicity, kidney disease, cancer, diabetes, lung disease, heart disease, neurologic disease, mental illness, and more . All models were stratified by sex.	Data are the results of a multivariable logistic regression, which included the explanatory variables shown, plus region	¹ = Age-, sex- and number of comorbidities adjusted OR (95% CI); tbl 4 in suppl. of original study; ² = Age and sex-adjusted OR (95% CI)

Discussion and conclusion

We included five studies assessing possible risk factors for hospitalisation, ICU admission/severe or critical disease, and death due to COVID-19. We excluded studies with fewer than 5000 laboratory test positive cases, and studies that only reported results from univariate analyses, as several larger studies with multivariate analyses had become available since we published the previous version of this rapid review (May 12th, 2020).

In this review update, older and increasing age stands out as the predominant individual risk factor for hospital admission, severe disease, and death due to COVID-19. Male sex, race/ethnicity, deprivation score and obesity are all factors that also appear to be associated with increased risk. Furthermore, most comorbidities appear to be associated with increased risk, with increased number and severity of comorbid condition(s) appearing to be of compelling importance for increased risk of hospital admission and death.

Individuals with some conditions stand out as having particularly high risk, and further investigations are required to obtain more robust data, for example for individuals with Down syndrome. Generally, there is high agreement among study findings in relation to important risk factors. For differing results there is a need to identify and evaluate what the driving factors for these differences are. For example, there remains uncertainty on smoking as an independent risk factor. Smoking increases the risk of cardiovascular disease, cancer and chronic lung disease, all of which are risk factors for severe COVID-19. In analyses where one adjusts for both smoking and diseases caused by smoking, conflicting findings have been reported on smoking as a separate risk factor. Therefore, further studies are needed to clarify the role of smoking as an independent risk factor in relation to COVID-19 related outcomes.

Documentation for ICU admissions is less exhaustively covered compared to the other outcomes. The threshold for ICU admission might also be less clear than for hospital admission or death. Also, ICU admission might not provide an accurate image of those with the most severe illness, but rather a combination of those with severe illness that have a better prognosis. Depending on available resources and a necessity for care triage, patients might be admitted to intensive care differently at different times. This is important to consider when interpreting the reported findings. Hence, ICU admissions might not provide a good basis for decisions relating to which population groups are at most risk for severe COVID-19 outcomes.

The outcome hospitalisation might also not be completely representative, as ease of access to care might vary from one setting to another. Several factors influence seeking medical care and hospital admission, e.g., higher out of pocket payments might disincentivise individuals seeking help, leading to only registration of more severe. This is particularly relevant to consider for studies from the USA, as there is no universal healthcare program. On the other hand, ease of access might overrepresent less severe cases, as suspected in the Danish study. In addition, organisational aspects of how care is provided vary between countries. In Norway, nursing home patients with COVID-19 are usually not admitted to hospital but managed within the nursing home setting.

Nonetheless, since our last update the evidence base regarding important risk factors for hospital admission or death is more robust. We were able to reaffirm some of our previous findings and to expand and strengthen our evidence base. We were able to increase the threshold for minimum participants tenfold, while only looking at peer reviewed publications. Additionally, we performed quality assessment of included studies. We did not grade the certainty of evidence, which is why the results from this review should still be interpreted with caution. It should be noted that only associations are reported in the included studies, hence causal relationships cannot be confirmed or refuted.

The included studies were heterogeneous in terms of statistical methods and procedures applied for selection of factors to include in the multivariate model. Some studies provided odds ratios whereas other studies reported hazard ratios. As several registry studies looking at a similar population in the same country were included, there is a possibility that some study participants are included in more than one study. There was also large variability in the number of factors included in the multivariate model. One study reported all results separately for each sex. We also found large variability in the way different factors were categorised. Differences in reporting also represent differences in target population and characteristics, as for example ethnical groups in one location may not be representative for that of another location. The existing heterogeneity impairs direct comparison of risk estimates across studies, and meta-analysis was therefore not feasible.

Conclusion

The elderly are clearly the main group at risk of hospital admission, severe illness, and death if infected by COVID-19. Most comorbidities appear to increase risk, with increasing number of and severity of comorbidities contributing to a further increase in the overall risk. Male sex, obesity, non-white ethnicity and deprivation are also associated with increased risk.

References

1. Flodgren GM VD, Brurberg KG. . COVID-19: Risk factors associated with disease severity – a rapid review, 2nd update.
2. GA Wells BS, D O'Connell, J Peterson, V Welch, M Losos, P Tugwell. The Newcastle-Ottawa Scale (NOS) for assessing the quality of nonrandomised studies in meta-analyses.
3. Barron E, Bakhai C, Kar P, Weaver A, Bradley D, Ismail H, et al. Associations of type 1 and type 2 diabetes with COVID-19-related mortality in England: a whole-population study. *Lancet Diabetes Endocrinol.* 2020;8(10):813-22.
4. Clift AK, Coupland CAC, Keogh RH, Diaz-Ordaz K, Williamson E, Harrison EM, et al. Living risk prediction algorithm (QCOVID) for risk of hospital admission and mortality from coronavirus 19 in adults: national derivation and validation cohort study. *BMJ.* 2020;371:m3731.
5. Petrilli CM, Jones SA, Yang J, Rajagopalan H, O'Donnell L, Chernyak Y, et al. Factors associated with hospital admission and critical illness among 5279 people with coronavirus disease 2019 in New York City: prospective cohort study. *BMJ.* 2020;369:m1966.
6. Reilev M, Kristensen KB, Pottegard A, Lund LC, Hallas J, Ernst MT, et al. Characteristics and predictors of hospitalization and death in the first 11 122 cases with a positive RT-PCR test for SARS-CoV-2 in Denmark: a nationwide cohort. *Int J Epidemiol.* 2020.
7. Williamson EJ, Walker AJ, Bhaskaran K, Bacon S, Bates C, Morton CE, et al. Factors associated with COVID-19-related death using OpenSAFELY. *Nature.* 2020;584(7821):430-6.
8. Abate BB, Kassie AM, Kassaw MW, Aragie TG, Masresha SA. Sex difference in coronavirus disease (COVID-19): a systematic review and meta-analysis. *BMJ Open.* 2020;10(10):e040129.
9. Akiyama S, Hamdeh S, Micic D, Sakuraba A. Prevalence and clinical outcomes of COVID-19 in patients with autoimmune diseases: a systematic review and meta-analysis. *Ann Rheum Dis.* 2020.
10. Attaubi M, Poulsen A, Theede K, Pedersen N, Larsen L, Jess T, et al. Prevalence and Outcomes of COVID-19 Among Patients With Inflammatory Bowel Disease—A Danish Prospective Population-based Cohort Study. *Journal of Crohn's and Colitis.* 2020.
11. Attaway AA, Zein J, Hatipoglu US. SARS-CoV-2 infection in the COPD population is associated with increased healthcare utilization: An analysis of Cleveland clinic's COVID-19 registry. *EClinicalMedicine.* 2020;26:100515.
12. Barochiner J, Martinez R. Use of inhibitors of the renin-angiotensin system in hypertensive patients and COVID-19 severity: A systematic review and meta-analysis. *J Clin Pharm Ther.* 2020.
13. Boulle A, Davies MA, Hussey H, Ismail M, Morden E, Vundle Z, et al. Risk factors for COVID-19 death in a population cohort study from the Western Cape Province, South Africa. *Clin Infect Dis.* 2020.
14. Caraballo C, McCullough M, Fuery MA, Chouairi F, Keating C, Ravindra NG, et al. COVID-19 infections and outcomes in a live registry of heart failure patients across an integrated health care system. *PLOS ONE.* 2020;15(9):e0238829.

15. de Chaisemartin C, de Chaisemartin L. BCG vaccination in infancy does not protect against COVID-19. Evidence from a natural experiment in Sweden. *Clin Infect Dis*. 2020.
16. Derikx LAAP, Lantinga MA, de Jong DJ, van Dop WA, Creemers RH, Römken TEH, et al. Clinical Outcomes of Covid-19 in Patients with Inflammatory Bowel Disease: A Nationwide Cohort Study. *Journal of Crohn's and Colitis*. 2020.
17. Du Y, Lv Y, Zha W, Zhou N, Hong X. Association of Body mass index (BMI) with Critical COVID-19 and in-hospital Mortality: a dose-response meta-analysis. *Metabolism*. 2020;154373.
18. Fresan U, Guevara M, Elia F, Albeniz E, Burgui C, Castilla J, et al. Independent role of morbid obesity as a risk factor for COVID-19 hospitalization: a Spanish population-based cohort study. *Obesity (Silver Spring)*. 2020.
19. Graziani DS, J.B.; Del Rio-Bermudez, C.; Morena, D.; Díaz, T.; Castillo, M.; Alonso, M.; Ancochea, J.; Lumbreras, S.; Izquierdo, J.L. . Characteristics and Prognosis of COVID-19 in Patients with COPD. *J. Clin. Med*. 2020, 9, 3259.
20. Harrison SL, Fazio-Eynullayeva E, Lane DA, Underhill P, Lip GYH. Comorbidities associated with mortality in 31,461 adults with COVID-19 in the United States: A federated electronic medical record analysis. *PLOS Medicine*. 2020;17(9):e1003321.
21. Hippisley-Cox J, Young D, Coupland C, Channon KM, Tan PS, Harrison DA, et al. Risk of severe COVID-19 disease with ACE inhibitors and angiotensin receptor blockers: cohort study including 8.3 million people. *Heart*. 2020;106(19):1503-11.
22. Hamer M, Gale CR, Kivimäki M, Batty GD. Overweight, obesity, and risk of hospitalization for COVID-19: A community-based cohort study of adults in the United Kingdom. *Proceedings of the National Academy of Sciences*. 2020;117(35):21011-3.
23. Hamer M, Gale CR, Batty GD. Diabetes, glycaemic control, and risk of COVID-19 hospitalisation: Population-based, prospective cohort study. *Metabolism*. 2020;112:154344.
24. Holman N, Knighton P, Kar P, O'Keefe J, Curley M, Weaver A, et al. Risk factors for COVID-19-related mortality in people with type 1 and type 2 diabetes in England: a population-based cohort study. *The Lancet Diabetes & Endocrinology*. 2020;8(10):823-33.
25. Ioannou GN, Locke E, Green P, Berry K, O'Hare AM, Shah JA, et al. Risk Factors for Hospitalization, Mechanical Ventilation, or Death Among 10 131 US Veterans With SARS-CoV-2 Infection. *JAMA Network Open*. 2020;3(9):e2022310-e.
26. Lee SW, Yang JM, Moon SY, Yoo IK, Ha EK, Kim SY, et al. Association between mental illness and COVID-19 susceptibility and clinical outcomes in South Korea: a nationwide cohort study. *The Lancet Psychiatry*.
27. Li J, Huang DQ, Zou B, Yang H, Hui WZ, Rui F, et al. Epidemiology of COVID-19: A systematic review and meta-analysis of clinical characteristics, risk factors, and outcomes. *Journal of Medical Virology*.n/a(n/a).
28. Punjani N, Ha A, Caputo J, Wang V, Wiechmann L, Chiasson MA, et al. Outcome Disparities Among Men and Women With COVID-19: An Analysis of the New York City Population Cohort. *J Drugs Dermatol*. 2020;19(10):960-7.
29. O'Reilly GM, Mitchell RD, Mitra B, Akhlaghi H, Tran V, Furyk JS, et al. Epidemiology and clinical features of emergency department patients with suspected and confirmed COVID-19: A multisite report from the COVID-19 Emergency Department Quality Improvement Project for July 2020 (COVED-3). *Emergency Medicine Australasia*.n/a(n/a).
30. Ravanan R, Callaghan CJ, Mumford L, Ushiro-Lumb I, Thorburn D, Casey J, et al. SARS-CoV-2 infection and early mortality of waitlisted and solid organ transplant recipients in England: A national cohort study. *American Journal of Transplantation*. 2020;20(11):3008-18.
31. Rentsch CT, Kidwai-Khan F, Tate JP, Park LS, King JT, Jr., Skanderson M, et al. Patterns of COVID-19 testing and mortality by race and ethnicity among United States veterans: A nationwide cohort study. *PLOS Medicine*. 2020;17(9):e1003379.
32. Schultze A, Walker AJ, MacKenna B, Morton CE, Bhaskaran K, Brown JP, et al. Risk of COVID-19-related death among patients with chronic obstructive pulmonary disease or

- asthma prescribed inhaled corticosteroids: an observational cohort study using the OpenSAFELY platform. *The Lancet Respiratory Medicine*. 2020;8(11):1106-20.
33. Yang JM, Koh HY, Moon SY, Yoo IK, Ha EK, You S, et al. Allergic disorders and susceptibility to and severity of COVID-19: A nationwide cohort study. *Journal of Allergy and Clinical Immunology*. 2020;146(4):790-8.
 34. Yanover C, Mizrahi B, Kalkstein N, Marcus K, Akiva P, Barer Y, et al. What Factors Increase the Risk of Complications in SARS-CoV-2–Infected Patients? A Cohort Study in a Nationwide Israeli Health Organization. *JMIR Public Health Surveill*. 2020;6(3):e20872.
 35. Yonas E, Alwi I, Pranata R, Huang I, Lim MA, Gutierrez EJ, et al. Effect of heart failure on the outcome of COVID-19 — A meta analysis and systematic review. *The American Journal of Emergency Medicine*.
 36. Wang Q, Xu R, Volkow ND. Increased risk of COVID-19 infection and mortality in people with mental disorders: analysis from electronic health records in the United States. *World Psychiatry*.n/a(n/a).
 37. Woolford SJ, D'Angelo S, Curtis EM, Parsons CM, Ward KA, Dennison EM, et al. COVID-19 and associations with frailty and multimorbidity: a prospective analysis of UK Biobank participants. *Aging Clinical and Experimental Research*. 2020;32(9):1897-905.
 38. Zhu Z, Hasegawa K, Ma B, Fujiogi M, Camargo CA, Jr., Liang L. Association of obesity and its genetic predisposition with the risk of severe COVID-19: Analysis of population-based cohort data. *Metabolism - Clinical and Experimental*. 2020;112.

Appendix

Appendix 1; Search strategy

Search: 2020-10-27

Ovid MEDLINE(R) ALL 1946 to October 26, 2020

1	((((pneumonia or covid* or coronavirus* or corona virus* or ncov* or 2019-ncov or sars*).mp. or exp pneumonia/) and Wuhan.mp.) or (coronavirus disease 2019 or 2019-ncov or ncov19 or ncov-19 or 2019-novel CoV or sars-cov2 or sars-cov-2 or sars-coronavirus2 or sars-coronavirus-2 or sars-like coronavirus* or coronavirus-19 or covid19 or covid-19 or covid 2019 or ((novel or new or nouveau) adj2 (CoV or nCoV or covid or coronavirus* or corona virus or pandemic*2)) or ((covid or covid19 or covid-19) and pandemic*2) or (coronavirus* and pneumonia)).mp. or COVID-19.rx,px,ox. or severe acute respiratory syndrome coronavirus 2.os.	68513
2	Hospitalization/ or exp Mortality/ or Critical Care/ or exp Intensive Care Units/ or exp Respiration, Artificial/ or (hospitalization* or hospitalization* or hospitalized or hospitalised or ((admit* or admission*) adj3 hospital*) or death* or mortality or ICU or ((intensive or critical) adj3 care) or ventilat* or intubat*).mp.	2535401
3	Cohort Studies/ or Prospective Studies/ or Meta-Analysis.pt. or Systematic Review.pt. or (population-based or (large adj population*) or nationwide or nation-wide).mp. or (cohort* or systematic review or meta-analys*).ti.	1225100
4	1 and 2 and 3	1765
5	(202008* or 202009* or 202010*).dt.	361781
6	4 and 5 [referanser lagt til august, september, oktober 2020]	834
7	4 not 5 [referanser lagt til fram til juli 2020]	931

Embase 1974 to 2020 October 26

1	(((pneumonia or covid* or coronavirus* or corona virus* or ncov* or 2019-ncov or sars*).mp. or exp pneumonia/) and Wuhan.mp.) or (coronavirus disease 2019 or 2019-ncov or ncov19 or ncov-19 or 2019-novel CoV or sars-cov-2 or sars-cov-2 or sars-coronavirus2 or sars-coronavirus-2 or sars-like coronavirus* or coronavirus-19 or covid19 or covid-19 or covid 2019 or ((novel or new or nouveau) adj2 (CoV or nCoV or covid or coronavirus* or corona virus or pandemic*2)) or ((covid or covid19 or covid-19) and pandemic*2) or (coronavirus* and pneumonia)).mp. or (coronavirus disease 2019 or severe acute respiratory syndrome coronavirus 2).sh,dj.	69616
2	Hospitalization/ or exp Mortality/ or Intensive Care/ or exp Intensive Care Unit/ or exp Artificial Ventilation/ or (hospitalization* or hospitalization* or hospitalized or hospitalised or ((admit* or admission*) adj3 hospital*) or death* or mortality or ICU or ((intensive or critical) adj3 care) or ventilat* or intubat*).mp.	3620613
3	Cohort Analysis/ or Prospective Study/ or Systematic Review/ OR Meta Analysis/ or (population-based or (large adj population*) or nationwide or nation-wide).mp. or (cohort* or systematic review or meta-analys*).ti.	1785709
4	1 and 2 and 3	3102
5	Limit 4 to embase status	2323
6	(202008* or 202009* or 202010*).dc.	664242
7	5 and 6 [referanser lagt til august, september, oktober 2020]	1648
8	5 not 6 [referanser lagt til fram til juli 2020]	675

Appendix 2; Excluded studies

Table of excluded studies

First author	Reason for exclusion
Abate (8)	Systematic review
Akiyama (9)	Systematic reviews
Attouabi (10)	Different population
Attaway (11)	Different population
Barochiner (12)	Systematic reviews
Boulle (13)	Different population
Caraballo (14)	Different population
de Chaisemartin (15)	Different population
Derikx (16)	Different population
Du (17)	Systematic reviews
Fresan (18)	Different population
Graziani (19)	Not peer reviewed
Harrison (20)	Different population
Hippisley-Cox (21)	Different population
Hamer (22)	Sample size
Hamer (23)	Sample size
Holman (24)	Different population
Ioannou (25)	Different population
Lee (26)	Different population
Li (27)	Systematic reviews
Punjani (28)	No multivariate analysis reported
O'Reilley (29)	Sample size
Ravanan (30)	Different population
Rentsch (31)	Different population
Schultze (32)	Different population
Yang (33)	Different population
Yanover (34)	Sample size
Yonas (35)	Systematic reviews
Wang (36)	Different population
Woolford (37)	Sample size
Zhu (38)	Different population

