

## Systematic Review and Meta- and Pooled Analysis

### Maternal Medication Use and Childhood Cancer in Offspring—Systematic Review and Considerations for Researchers

Sarah Hjorth\*, Caroline H. Hemmingsen, Justine Bénévent, Anne Broe, Anton Pottegaard, Lina S. Mørch, Maarit K. Leinonen, Susanne K. Kjaer, Marie Hargreave, and Hedvig Nordeng

\* Correspondence to Sarah Hjorth, PharmacoEpidemiology and Drug Safety Research Group, Department of Pharmacy, University of Oslo, Postboks 1068 Blindern 0316 Oslo, Norway (e-mail: [s.h.andersen@farmasi.uio.no](mailto:s.h.andersen@farmasi.uio.no)).

Initially submitted January 12, 2021; accepted for publication May 17, 2021.

Cancer is an important cause of childhood mortality, yet the etiology is largely unknown. A combination of pre- and postnatal factors is thought to be implicated, including maternal medication use. We aimed to provide: 1) a systematic review of peer-reviewed publications on associations between maternal medication use and childhood cancer, with a focus on study design and methodology; and 2) suggestions for how to increase transparency, limit potential biases, and improve comparability in studies on maternal medication use and childhood cancer. We conducted a systematic search in the PubMed, Embase, Scopus, Cochrane, and Web of Science databases to June 8, 2020. Altogether, 112 studies were identified. The reviewed studies were heterogeneous in study design, exposure, and outcome classification. In 21 studies (19%), the outcome was any childhood cancer. Of the 91 papers that reported on specific types of cancer, 62% did not report the cancer classification system. The most frequently investigated medication groups were sex hormones (46 studies, excluding fertility medications), and anti-infectives (37 studies). Suggestions for strengthening future pharmacoepidemiologic studies on maternal medication use and childhood cancer relate to choice of cancer classification system, exposure windows, and methods for identification of, and control for, potential confounders.

cancer; child; delayed effects; medications; pharmacoepidemiology; prenatal exposure

Abbreviations: ICC, *International Classification of Childhood Cancers*; ICD, *International Classification of Diseases*.

The worldwide incidence of childhood cancer is estimated at 140 per million person-years and is increasing (1–3). The etiology of childhood cancer is largely unknown but thought to be explained by both pre- and postnatal factors (4–6). The increasing incidence of childhood cancer could point to environmental risk factors that have changed over time (2–4).

The only fully established transplacental chemical carcinogen is diethylstilbestrol (7). The research on diethylstilbestrol sparked an interest in the investigation of maternal medication use and risk of childhood cancers (8). In recent years, some studies (9–12), but not all (13, 14), pointed to an association between maternal medication use and childhood cancer. A review of the literature before 1997 illustrated the heterogeneity in the literature, in particular with regard to the applied cancer classification (8). Suggestions for methods have been provided for pharmacoepidemiologic studies of

medication-cancer associations in adults (15), but to our knowledge, guidance has not been provided for maternal medication–childhood cancer associations. Therefore, we aimed to provide: 1) a review of peer-reviewed publications on associations between maternal medication use and childhood cancer, with a focus on study design and methodology; and 2) suggestions on how to increase transparency, limit potential biases, and improve comparability in studies on maternal medication use and childhood cancer.

#### METHODS

##### Search strategy

We conducted a systematic search in PubMed (National Center for Biotechnology Information, Bethesda, Maryland), Embase (Elsevier BV, Amsterdam, the Netherlands),

Scopus (Elsevier BV), Cochrane (John Wiley & Sons, Hoboken, NJ), and Web of Science (Core collection, The Thomson Corporation, Toronto, Canada) from database inception (1966 or earlier depending on database) to June 8, 2020, to address the following specific questions:

- Classification of childhood cancer: How was the outcome classified (as any cancer, or according to specific diagnoses; specified by the International Classification of Diseases (ICD), the International Classification of Childhood Cancers (ICCC), or other)?
- Exposure windows: What timing of maternal medication use was investigated (during pregnancy only, including periods before pregnancy, or during breastfeeding)?
- Study design: What study designs were used?
- Methods and statistics: What statistical and epidemiologic methods were used?
- Follow-up/age at case ascertainment: What was the maximum age at follow-up (cohort studies)/age at case ascertainment (case-control studies)?

Reference lists of relevant reviews and included studies were screened to ensure complete coverage of the published literature. Our initial search used the search terms “child” AND “prenatal” AND “medication” AND “cancer,” including relevant synonyms. However, this search proved too narrow, as more studies were identified from reference lists than from the search itself. Many such studies identified via reference lists did not include the term “medication” in their titles or abstracts. The search was therefore repeated using only “child” AND “prenatal” AND “cancer,” and relevant synonyms. An example of search terms and search strategy for the PubMed database can be found in Web Table 1 (available at <https://doi.org/10.1093/aje/kwab154>).

References were imported into the reference management program Endnote (16), where duplicates were removed. The remaining references were imported to Rayyan QCRI (17), a platform for management of systematic review data. Title and abstract screening, as well as full text screening were performed independently by 2 reviewers (S.H. and C.H.H.). Any disagreement was solved by a discussion among all authors.

### Inclusion criteria

Studies were considered eligible for inclusion if they fulfilled the following criteria for participants, exposures, comparators, outcomes, and study design: Participants were required to be children, defined as individuals under the age of 20 years. The exposure was restricted to maternal pre-pregnancy or pregnancy use of prescription or over-the-counter medication, as identified in prescription data or from self-reported data. To maintain the study focus on therapeutic medications, studies on supplements (vitamins/minerals) and studies on use of illegal substances were not included. Studies that classified exposure as “any medication” were also excluded. Comparators were children born to mothers who did not use the specified medications. This included children born to healthy mothers (population comparators), children born to mothers with illnesses but not receiving

treatment (disease comparators), and children born to mothers who used specified medications other than the medication of interest for the study (active comparators). The outcome was childhood cancer. Studies that used children with other types of cancer as controls were excluded. Randomized controlled trials, cohort studies, and case-control studies were eligible for inclusion. Papers that were not original studies (e.g., reviews and editorials), studies without a comparison group, cross-sectional studies, ecological studies, and animal studies were excluded, as were conference abstracts, study protocols, and pilot studies. No restrictions were applied as to study date or setting, but for resource reasons, the search was limited to peer-reviewed publications in English, French, or one of the Scandinavian languages.

### Data extraction

Data items extracted from the included studies were decided a priori as follows: study design, setting, sample size, number of exposed, number of cases, age at end of follow-up/case ascertainment, exposure and outcome classification, statistical analysis, and adjustment variables. Data was extracted by S.H. and J.B.

No systematic tool like GRADE (18) or ROBINS-I (19) was used to assess risk of bias in the individual studies. Instead, all eligible studies were assessed according to the prespecified questions mentioned above, and studies were discussed in the author group to identify suggestions for future research.

Data was grouped by medication exposure according to indication for use. Given the study aims, no synthesis of study findings was planned.

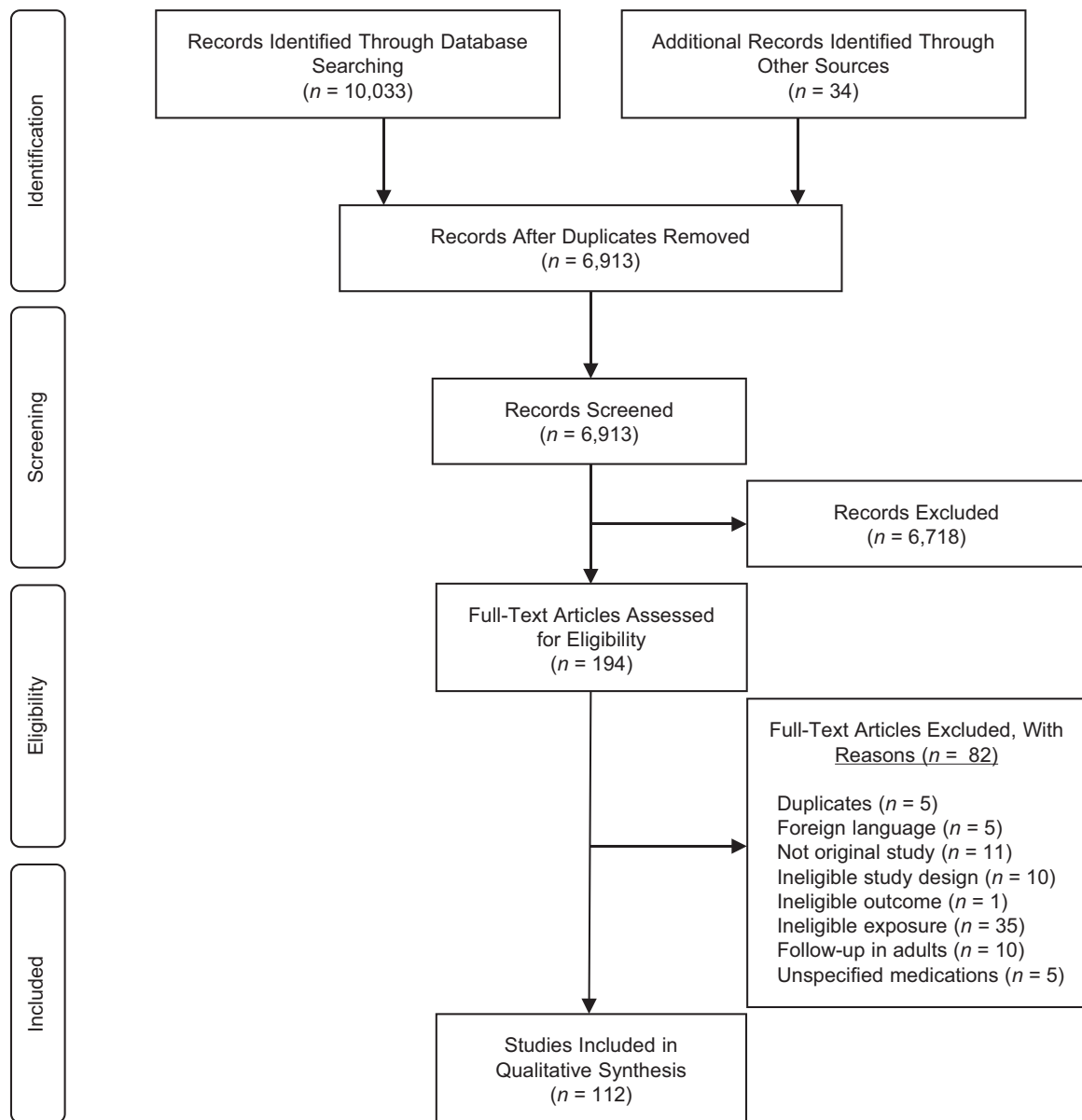
### Post hoc sensitivity analyses

We performed 2 sensitivity analyses post hoc to assess the robustness of the findings. The first was restricted to the most recent studies, published between 2011 and 2020, as methodological developments over the years might have had an impact on the quality of the included studies. The second was a restriction to studies where childhood cancer was the main outcome, given that analyses of main and secondary outcomes might differ systematically.

## RESULTS

The literature search yielded 10,033 studies. After removal of duplicate records, 6,879 studies were left for title and abstract screening. Of these, 160 were relevant for full-text assessment, and 78 were eligible for inclusion (7, 9–14, 20–90). An additional 34 studies were identified from reference lists of included studies and relevant reviews (91–124). See Figure 1 for flowchart showing selection according to Preferred Reporting Items for Systematic Reviews and Meta-Analyses (125).

Data was extracted from 112 studies performed between 1958 and 2020. Studies originated from Europe (50 studies), North America (48 studies), Asia (6 studies), South America



**Figure 1.** Flowchart for selection of studies relating to the associations between maternal medication use and childhood cancer, according to Preferred Reporting Items for Systematic Reviews and Meta-Analyses (125).

(4 studies), and Australia (2 studies). In addition, there were 2 transcontinental studies (Table 1).

### Classification of childhood cancer

In 21 studies (19%), the outcome was a composite endpoint of “any childhood cancer” (Table 1). An additional 13 studies (12%) reported results for any childhood cancer, in addition to specific types of cancer. Of the 91 papers that reported on specific types of cancer, 62% did not report the cancer classification system. In the remaining papers,

the most commonly reported classification system was the ICD. Some studies had their classification system labeled as “other,” for instance, because they used more detailed classifications by disease staging (74). Several studies (32%) reported more than one group or specific type of cancer (range 1–16). The most commonly reported main diagnostic groups were leukemias (25 studies) and central nervous system tumors (14 studies). The most commonly investigated subgroups of childhood cancer were acute lymphoblastic leukemias (26 studies), acute myeloid leukemias (15 studies), and neuroblastomas (14 studies).

**Table 1.** Summary Characteristics of 112 Included Studies on Associations Between Maternal Medication Use and Childhood Cancer, Worldwide, 1958–2020

Study Characteristic	No. of Studies (n = 112)	%
Year of publication		
<1971	1	1
1971–1980	6	5
1981–1990	21	19
1991–2000	19	17
2001–2010	27	24
2011–2020	38	34
Continent where study was conducted		
Africa	0	0
Asia	6	5
Australia	2	2
Europe	50	45
North America	48	43
South America	4	4
Transcontinental	2	2
No. of medication groups investigated		
1	67	60
2	11	10
3	7	6
≥4	27	23
Cancer classification system		
Any cancer	21	19
International Classification of Childhood Cancers	10	9
International Classification of Diseases	17	15
International Classification of Diseases for Oncology	4	4
Other	4	4
Not specified	56	50
Study design <sup>a</sup>		
Case-control	81	72
Case-cohort	7	6
Cohort	24	21
Randomized controlled trial	0	0
Exposure ascertainment <sup>b</sup>		
Maternal retrospective self-report	70	63
Maternal prospective self-report	4	4
Routinely collected health data	43	38
Statistical analysis		
Cox regression	17	15
Descriptive analysis	12	11
Logistic regression	65	58
Poisson regression	2	2
Other	16	14

Table continues

Table 1. Continued

Study Characteristic	No. of Studies (n = 112)	%
Maximum follow-up		
<5 years	10	9
5–9 years	11	10
10–14 years	51	46
≥15 years	33	29
Not specified	7	6
Comparator group <sup>c</sup>		
Population comparator	101	90
Disease comparator	8	7
Active comparator	2	2
Other <sup>d</sup>	3	3
Sample size		
<100	2	2
100–499	34	30
500–999	23	21
1,000–9,999	29	26
≥10,000	24	21
No. of cases <sup>e</sup>		
<100	32	29
100–499	48	43
500–999	17	15
≥1,000	16	14
No. of exposed <sup>e</sup>		
<100	68	61
100–499	42	38
500–999	4	4
≥1,000	21	19
Not stated	9	8
Adjustment or matching strategy in main analysis		
No adjustment or matching	8	7
Only confounders	82	73
At least 1 intermediate factor	19	17
Not specified	3	3

<sup>a</sup> The numbers do not add up because one study presented results from 2 countries. In one country, the design was case-cohort, and in the other, case-control.

<sup>b</sup> The numbers do not add up because 5 studies used 2 sources of exposure ascertainment.

<sup>c</sup> The numbers do not add up because 2 studies had more than 1 type of comparators.

<sup>d</sup> In one study the comparator group included cousins of exposed, in another study it included children of unexposed mothers and exposed fathers, and in the third study it included children of women who used the medication prior to pregnancy only.

<sup>e</sup> Numbers reported for the main analysis. If main exposure or outcome were not stated, all exposures and outcomes were considered equal, and the study could end up in more than one category.

## Exposure

Several studies (40%) investigated more than 1 medication group (range 1–13) (Table 1). The most frequently investigated medication groups were sex hormones (46 stud-

ies, excluding fertility medications), antiinfectives (37 studies), and fertility medications (30 studies) (Web Table 2).

In 15% of studies, more than 1 exposure window was investigated. The majority (56%), investigated maternal medication use anytime during pregnancy, whereas only 6%

investigated use in specific trimesters of pregnancy. Many studies (37%) investigated use prior to pregnancy, mainly use of fertility medications or sex hormones. Although most studies distinguished between use before, during, and after pregnancy, 14% of studies investigated an exposure window including more than one peripregnancy period (e.g., prepregnancy and pregnancy, or pregnancy and breastfeeding). Analyses by dose or duration were available in 10 studies (9%).

Exposure was ascertained by maternal retrospective self-report in 70 studies (63%), from routinely collected health data in 43 studies (38%), and from maternal prospective self-report in 4 studies (4%). Five studies (4%) used 2 sources of exposure ascertainment. A total of 27 studies (24%) accounted for potential exposure misclassification; 24 of these had ascertained exposure by maternal retrospective recall.

### Study design

The majority of studies were case-control studies (81 studies, 72%), 21% were cohort studies, and the remainder were case-cohort studies (Table 1). Two studies had less than 100 participants, and 21% of studies had more than 10,000 participants. In contrast to the high number of participants, 61% of the studies had less than 100 exposed, and 29% of studies had less than 100 cases in their main analysis. In 9 studies, there were either no cases, or no exposed cases or controls, for the main analysis. Almost all studies used population comparators (90%), but disease comparators were used in 8 studies, and active comparators were used in 2 studies. Some studies used more than 1 type of comparator.

### Statistical and epidemiologic methods

The most commonly used statistical analysis was logistic regression (58% of studies). Cox regression was used in 15% of studies, and 2 studies used Poisson regression. Purely descriptive analysis was used in 11% of the studies, mainly when the sample size was limited, or when cancer was not the main outcome of the study. The studies using other statistical methods (14%) were predominantly studies performed in the 1970s and 1980s. An example of a statistical method used in these studies is the Mantel-Haenszel method for stratified analysis (44, 54, 103). Whereas 73% of studies included matching or adjustment for 1 or more potential confounding factors, 7% had no adjustment, and 17% adjusted for at least 1 potential intermediate factor in their main analysis (Table 1). The most frequently included intermediate factors were gestational age at birth (11 studies) and birth weight (10 studies).

### Follow-up/age at case ascertainment

The mean upper limit of follow-up/age at case ascertainment for the children was 14 years. In 35% of studies, the age range was 0–14 years, and in 18% of studies, the age range was 0–19 years. The remaining studies used other age ranges, either determined by the peak incidence of the

type of cancer investigated (e.g., less than 5 years of age for hepatoblastoma (104)), or by data availability (e.g., less than 9 years in a study using data from an existing birth cohort (82)).

### Post hoc sensitivity analyses

In the first sensitivity analysis of 38 studies published between 2011 and 2020, “any childhood cancer” was used as the outcome by a larger proportion of studies than in the studies published before 2011 (26% compared with 15%), and more studies on specific cancer types reported on the classification system used (14 of 28 studies on specific cancer types, 50% compared with 33% in the studies published before 2011). A lower proportion of studies ascertained exposure by maternal retrospective report (39% compared with 74%), but a larger proportion adjusted for at least 1 intermediate factor in a main analysis (29% compared with 11%).

The second sensitivity analysis excluded 7 studies that did not have childhood cancer as their main outcome. The results were largely similar to the main analysis, except that a lower proportion of studies (14 of 105 studies, 13%) had investigated childhood cancer as a composite outcome.

## DISCUSSION

### Main findings

In this review of 112 studies on maternal use of medication before or during pregnancy and childhood cancer in offspring, 19% used “any cancer” as the outcome. A majority of the studies that investigated specific types of cancer did not report the cancer classification system (62%). In most studies (56%), the exposure window was anytime during pregnancy, but 15% of studies investigated more than one exposure window. A majority of studies were case-control studies (72%). Most studies (73%) accounted for potential confounding by matching and/or adjustment, but 17% of studies adjusted for at least 1 intermediate factor in a main analysis. The mean upper limit of follow-up/age at case ascertainment was 14 years.

### Limitations

Of 112 included studies, 34 were identified from reference lists. Half of these investigated fertility medications, whereas the other half did not have any pattern of common characteristics. This could indicate that the search terms included in the literature search were not exhaustive for fertility medications. Because it takes some time from when a study is published to when it can be cited, we might have incomplete coverage of the literature from late 2019 and early 2020. In addition, we had to exclude 5 studies due to language restrictions. For these studies, we have not been able to assess eligibility in a full-text reading, and thus we do not know whether they fulfilled the inclusion criteria for the present review. Authors for whom English is not their first language are more likely to publish studies with

negative findings in local, non-English-language journals (126). It is not known whether methods or reporting differ systematically between studies published in English and studies published in local journals.

### Considerations for future research

*Reporting of cancer types according to the ICCC when possible.* It has been argued that “any cancer” should not be used as an outcome in studies of medication-cancer associations in adults (15). In brief, this is because cancer is a heterogeneous disease, and no known carcinogens increase the risk of every type of cancer (15). This also applies to childhood cancer, arguing for investigations of specific types of cancer when possible. Although limited sample sizes can render a detailed outcome classification impracticable, it should be noted that the grouping of outcomes might in fact reduce study precision. This seemingly counterintuitive claim stems from the fact that investigating several cancer types in one group will introduce heterogeneity leading to increased variance and therefore wider confidence intervals (127). However, for new and rarely used treatments (e.g., biologicals), studies with any cancer as the outcome might be the only option, and might still provide important reassurance or serve to flag initial safety signals. Yet, even if the risk estimate for overall cancer is not increased, this does not rule out the possibility that the studied medication increases the risk of a specific type of cancer. Therefore, results indicating null associations from studies using any cancer as the outcome should be reported and interpreted with caution. On the other hand, if studies using imprecise outcomes do identify a signal, this could warrant further investigation. To prioritize among multiple signals for further investigation, it can be useful to employ methods such as empirical Bayes shrinkage, which adjusts observed estimates of association for random variation and is thought to reduce the number of false positive findings (128). In studies with only a few exposed cases, it might be beneficial to apply a lesson learned from teratology (129, 130) and report on any patterns of specific cancer types, even if statistical analysis is feasible only for a combination of all cancers. It was the presence of a specific type of cancer that first suggested the transplacental carcinogenicity of diethylstilbestrol (7), just as the specific patterns of syndromes or malformations flagged the potential teratogenicity of thalidomide and valproic acid (129).

For studies that have the statistical power to report risk estimates for specific types of childhood cancer, the next question is what classification scheme to use. To facilitate pooling of data in meta-analyses, a standardization of the outcome classification would be helpful (8). The need for standardization led to the development of the ICCC in 1987 (131). Childhood cancers differ from cancers in adults by being embryonal in type and arising in organ systems that do not map onto the traditional sites that are used in classification of adult cancers (131). Therefore, ICCC is based primarily on the type and behavior of the cancer cells, with some site-based groupings to facilitate comparisons with ICD. In addition, the most common childhood cancers have individual codes (131). This makes the ICCC preferable to

ICD for classification of childhood cancers. The International Classification of Diseases for Oncology, while not adapted specifically to childhood cancers, is still preferable to the ICD, because it takes morphology into account. From a pharmacological point of view, it is plausible that morphologically similar cancers will react to medication exposures in a similar fashion, whereas cancers of the same site might not (15). Hence, researchers should consider using the ICCC classification system when possible. The International Classification of Diseases for Oncology, recommended for use in cancer registries, could be an alternative in situations where mapping to the ICCC is not feasible.

*Biological plausibility should guide the exposure definition and exposure windows.* Both preclinical findings (e.g., from in vitro or animal studies) and signals from previous human studies could be helpful to inform the exposure definition. If, for instance, the hypothesis is that hormonal disruption from exposure to oral contraceptives plays a causal role in the development of childhood nonlymphoid leukemias (9), it might be insufficient to study oral contraceptives as a group. Most oral contraceptives contain an estrogen analog and progestin, whereas others contain progestin only. Findings would then be attenuated for “any oral contraceptives,” if estrogen was the causally important substance. Further, analyses by dose or duration of exposure are helpful when feasible, given that there might be threshold levels for effect (15).

Once the exposure has been defined, the relevant exposure window should be chosen. As opposed to teratology, where the relevant exposure window for most malformations is the first trimester (129), relevant exposure window(s) for childhood cancers are largely unknown. One proposed relevant exposure window is immediately after fertilization, when the epigenome is thought to be highly sensitive to environmental factors (132). In the present review, different approaches were seen across studies, mainly ranging from a year before conception until the end of pregnancy. One study considered maternal exposure when the mother was a fetus (84). Seeing that the ovaries and egg cells for future offspring are formed in fetal life (133), it is possible that medications taken throughout the life course could affect the egg cells. Some studies investigated maternal medication use during pregnancy and/or breastfeeding (30, 63, 66, 89, 100). In studies where the exposure window extends beyond the prenatal period, the outcome can happen during the exposure window, thus potentially introducing immortal time bias (134). Immortal time bias can be avoided, for example, by moving the start of follow-up or case ascertainment to the end of the exposure window (134). The use of study design diagrams, as advocated by Schneeweiss et al. (135), could also help to clarify the timing of eligibility, exposure, covariate, and outcome assessment in the study. In Web Figure 1, we provide an example of a study design diagram. Because the relevant exposure window is uncertain, it could be beneficial to investigate several exposure definitions within one study (i.e., ever before pregnancy, 1 year before pregnancy, during pregnancy, during the first trimester, etc.). Another argument for the use of several different exposure definitions is specific to registry- or claims-based studies. In these

studies, exposure in a given time window, such as the first trimester, is not driven solely by prescriptions filled in the time window. Prescriptions filled immediately before the time window might also contribute, if the dispensed medications covered part of the time window (136).

Regardless of the data source, authors should consider the risk of exposure misclassification. With prospective exposure ascertainment, the misclassification is often (but not always) nondifferential, whereas this cannot be assumed for retrospective maternal recall (137). Probabilistic sensitivity analysis is a useful tool to assess the potential impact of misclassification (138).

*Use the new developments in confounder assessment and control.* Most studies in the present review addressed potential confounding through matching, adjustment, or both. Some, mainly newer, studies adjusted for potential intermediate factors such as gestational age and birth weight. In the best case scenario, adjusting for intermediate factors can preclude an estimation of the total effect of the exposure (139). However, it might introduce collider-stratification bias from unmeasured variables associated with both the intermediate factor and the outcome (139). Use of directed acyclic graphs could help ensure that adjustments are not made for intermediate factors (140). In Web Figure 2, we present an example of a directed acyclic graph. In many studies, the limited sample size can pose additional challenges for confounder adjustment. To avoid overfitting the models, serial change-in-estimate approaches for variable selection (141) or confounder summary scores can be used (142). Propensity score methods may be used if the exposure is more prevalent than the disease, because propensity scores are constructed from regression models with exposure as the dependent variable and covariates as independent variables (142).

Another method to estimate confounding in etiological epidemiology is by introducing a negative control (142, 143). A negative exposure control that has been suggested in perinatal pharmacoepidemiology is maternal medication use before pregnancy (142). However, as stated above, it cannot be ruled out that maternal prepregnancy exposure can affect the risk of childhood cancers, and so other negative controls should probably be preferred. Maternal medication use after birth can be used as a negative control in noncommunicable diseases, especially if maternal medication use is assessed when the breastfeeding has ceased. Paternal medication use while the mother is pregnant has been proposed to assess confounding by unmeasured genetic factors, or other unknown factors associated with medication use (144). If the main concern is confounding by the underlying maternal illness, the choice of disease or active comparators could be considered.

A majority of the studies in the present review used population comparators. This is a good choice in situations where the indication for medication use is not thought to influence cancer risk (e.g., contraceptives). However, if the underlying maternal disease has been linked to an increased risk of childhood cancer (e.g., autoimmune disease, human immunodeficiency virus infection (145)), use of population comparators might be inadequate. Here a disease comparator

could instead be used, comparing illness treated with medications to the same illness managed without medication. An active comparator (i.e., comparing different substances used for the same indication, or comparing mono- and polytherapy) should be considered if a suitable comparator exists (15). Sibling comparators are useful primarily if the main source of confounding is thought to be inherited genetic risk (142). Provided that life-course maternal exposure to medications can affect risk of childhood cancers, carryover effects between siblings should be considered (146).

Compared with the choice of epidemiologic methods, the choice of statistical methods is less important. That is because childhood cancer, in particular specific types of cancer, occurs so rarely that estimates of rate ratios and risk ratios will be virtually identical (147).

## CONCLUSION

Studying associations between maternal medication use and childhood cancer is methodologically challenging. This systematic literature review showed that such studies are largely heterogeneous in their study design, exposure, and outcome classification. To improve the transparency, limit potential biases, and improve comparability of future studies, we propose 3 points of consideration bridging the fields of prenatal pharmacoepidemiology and cancer epidemiology. The points include: 1) investigating specific types of childhood cancer according to the ICCC classification when possible, or as a minimum stating the classification system used; 2) carefully considering relevant exposure windows, including whether several exposure windows should be investigated; and 3) using appropriate methods for identification of potential covariates (i.e., directed acyclic graphs) and control of confounding (e.g., disease comparators, active comparators, negative controls).

## ACKNOWLEDGMENTS

Author affiliations: PharmacoEpidemiology and Drug Safety Research Group, Department of Pharmacy, University of Oslo, Oslo, Norway (Sarah Hjorth, Justine Bénévent, Hedvig Nordeng); PharmaTox Strategic Initiative, Faculty of Mathematics and Natural Sciences, University of Oslo, Oslo, Norway (Sarah Hjorth, Justine Bénévent, Hedvig Nordeng); Virus, Lifestyle and Genes, Danish Cancer Society Research Center, Copenhagen, Denmark (Caroline H. Hemmingsen, Susanne K. Kjaer, Marie Hargreave); Department of Medical and Clinical Pharmacology, Toulouse Faculty of Medicine, Centre Hospitalier Universitaire de Toulouse, Toulouse, France (Justine Bénévent); Clinical Pharmacology, Pharmacy and Environmental Medicine, Department of Public Health, University of Southern Denmark, Odense, Denmark (Anne Broe, Anton Pottegaard); Department of Clinical Biochemistry and Pharmacology, Odense University Hospital, Odense, Denmark (Anne Broe); Cancer Surveillance and Pharmacoepidemiology, Danish Cancer



Society Research Center, Copenhagen, Denmark (Lina S. Mørch); Data and Analytics, Information Services Department, Finnish Institute for Health and Welfare, Helsinki, Finland (Maarit K. Leinonen); Department of Child Health and Development, Norwegian Institute of Public Health, Oslo, Norway (Hedvig Nordeng).

M.H. and H.N. share last authorship.

This work was supported by PharmaTox QLS Visiting Scholarship (to J.B.) and a European Research Council Starting Grant (grant 639377 to H.N.).

Data availability: All relevant data are available within the article and Web material.

Conflict of interest: none declared.

## REFERENCES

- Kaatsch P. Epidemiology of childhood cancer. *Cancer Treat Rev.* 2010;36(4):277–285.
- Steliarova-Foucher E, Colombet M, Ries LAG, et al. International incidence of childhood cancer, 2001–10: a population-based registry study. *Lancet Oncol.* 2017;18(6):719–731.
- Grabas MR, Kjaer SK, Frederiksen MH, et al. Incidence and time trends of childhood cancer in Denmark, 1943–2014. *Acta Oncol Stockh Swed.* 2020;59(5):588–595.
- Wiemels J. Perspectives on the causes of childhood leukemia. *Chem Biol Interact.* 2012;196(3):59–67.
- Greaves M. Infection, immune responses and the aetiology of childhood leukaemia. *Nat Rev Cancer.* 2006;6(3):193–203.
- Fucic A, Guszak V, Mantovani A. Transplacental exposure to environmental carcinogens: association with childhood cancer risks and the role of modulating factors. *Reprod Toxicol.* 2017;72:182–190.
- Herbst AL, Ulfelder H, Poskanzer DC. Adenocarcinoma of the vagina. Association of maternal stilbestrol therapy with tumor appearance in young women. *N Engl J Med.* 1971;284(15):878–881.
- Little J. *Epidemiology of Childhood Cancer.* Lyon, France: International Agency for Research on Cancer; 1999.
- Hargreave M, Mørch LS, Andersen KK, et al. Maternal use of hormonal contraception and risk of childhood leukaemia: a nationwide, population-based cohort study. *Lancet Oncol.* 2018;19(10):1307–1314.
- Momen NC, Olsen J, Gissler M, et al. Exposure to systemic antibacterial medications during pregnancy and risk of childhood cancer. *Pharmacoepidemiol Drug Saf.* 2015;24(8):821–829.
- Ye X, Monchka BA, Righolt CH, et al. Maternal use of antibiotics and cancer incidence risk in offspring: a population-based cohort study in Manitoba, Canada. *Cancer Med.* 2019;8(11):5367–5372.
- Hleyhel M, Goujon S, Delteil C, et al. Risk of cancer in children exposed to didanosine in utero. *AIDS.* 2016;30(8):1245–1256.
- Seppälä LK, Vettenranta K, Pitkaniemi J, et al. Maternal diabetes and risk of childhood cancer in the offspring. *Int J Cancer.* 2020;147(3):662–668.
- Momen NC, Munk-Olsen T, Li J, et al. Antidepressant use during pregnancy and childhood cancer in the offspring. *Pharmacoepidemiol Drug Saf.* 2018;27(1):114–118.
- Pottegård A, Friis S, Stürmer T, et al. Considerations for Pharmacoepidemiological studies of drug-cancer associations. *Basic Clin Pharmacol Toxicol.* 2018;122(5):451–459.
- Web of Science Group. *Endnote. Version X9.* 2019. <https://endnote.com/product-details>. Accessed July 22, 2021.
- Ouzzani M, Hammady H, Fedorowicz Z, et al. Rayyan—a web and mobile app for systematic reviews. *Syst Rev.* 2016;5(1):210.
- Guyatt GH, Oxman AD, Vist G, et al. GRADE guidelines: 4. Rating the quality of evidence—study limitations (risk of bias). *J Clin Epidemiol.* 2011;64(4):407–415.
- Sterne JA, Hernán MA, Reeves BC, et al. ROBINS-I: a tool for assessing risk of bias in non-randomised studies of interventions. *BMJ.* 2016;355:i4919.
- Ajrouche R, Rudant J, Orsi L, et al. Maternal reproductive history, fertility treatments and folic acid supplementation in the risk of childhood acute leukemia: the ESTELLE study. *Cancer Causes Control.* 2014;25(10):1283–1293.
- Benhammou V, Warszawski J, Bellec S, et al. Incidence of cancer in children perinatally exposed to nucleoside reverse transcriptase inhibitors. *AIDS.* 2008;22(16):2165–2177.
- Bonaventure A, Simpson J, Ansell P, et al. Prescription drug use during pregnancy and risk of childhood cancer—is there an association? *Cancer Epidemiol.* 2015;39(1):73–78.
- Brinton LA, Krüger Kjær S, Thomsen BL, et al. Childhood tumor risk after treatment with ovulation-stimulating drugs. *Fertil Steril.* 2004;81(4):1083–1091.
- Buckley JD, Sather H, Ruccione K, et al. A case-control study of risk factors for hepatoblastoma. A report from the Childrens Cancer Study Group. *Cancer.* 1989;64(5):1169–1176.
- Bunin GR, Buckley JD, Boesel CP, et al. Risk factors for astrocytic glioma and primitive neuroectodermal tumor of the brain in young children: a report from the Children's Cancer Group. *Cancer Epidemiol Biomarkers Prev.* 1994;3(3):197–204.
- Cardy AH, Little J, McKean-Cowdin R, et al. Maternal medication use and the risk of brain tumors in the offspring: the SEARCH international case-control study. *Int J Cancer.* 2006;118(5):1302–1308.
- Carozza SE, Olshan AF, Faustman EM, et al. Maternal exposure to N-nitrosatable drugs as a risk factor for childhood brain tumours. *Int J Epidemiol.* 1995;24(2):308–312.
- Chambers CD, Johnson DL, Xu R, et al. Birth outcomes in women who have taken adalimumab in pregnancy: a prospective cohort study. *PLoS One.* 2019;14(10):e0223603.
- Chaparro M, Verreth A, Lobaton T, et al. Long-term safety of in utero exposure to anti-TNF $\alpha$  drugs for the treatment of inflammatory bowel disease: results from the multicenter European TEDDY study. *Am J Gastroenterol.* 2018;113(3):396–403.
- Cook MN, Olshan AF, Guess HA, et al. Maternal medication use and neuroblastoma in offspring. *Am J Epidemiol.* 2004;159(8):721–731.
- Cordier S, Iglesias M-J, le Goaster C, et al. Incidence and risk factors for childhood brain tumors in the ILE DE France. *Int J Cancer.* 1994;59(6):776–782.
- Couto AC, Ferreira JD, Pombo-de-Oliveira MS, et al. Pregnancy, maternal exposure to analgesic medicines, and leukemia in Brazilian children below 2 years of age. *Eur J Cancer Prev.* 2015;24(3):245–252.
- Erjaee A, Niknam M, Sadeghi A, et al. A significant breakthrough in the incidence of childhood cancers and

- evaluation of its risk factors in southern Iran. *Indian J Med Paediatr Oncol.* 2017;38(2):158–164.
34. Gilman EA, Wilson LM, Kneale GW, et al. Childhood cancers and their association with pregnancy drugs and illnesses. *Paediatr Perinat Epidemiol.* 1989;3(1):66–94.
  35. Gold E, Gordis L, Tonascia J, et al. Increased risk of brain tumors in children exposed to barbiturates. *J Natl Cancer Inst.* 1978;61(4):1031–1034.
  36. Goldhaber MK, Selby JV, Hiatt RA, et al. Exposure to barbiturates in utero and during childhood risk of intracranial and spinal cord tumors. *Cancer Res.* 1990;50(15):4600–4603.
  37. Golding J, Paterson M, Kinlen LJ. Factors associated with childhood cancer in a national cohort study. *Br J Cancer.* 1990;62(2):304–308.
  38. Green DM, Fiorello A, Zevon MA, et al. Birth defects and childhood cancer in offspring of survivors of childhood cancer. *Arch Pediatr Adolesc Med.* 1997;151(4):379–383.
  39. Heck JE, Lombardi CA, Meyers TJ, et al. Perinatal characteristics and retinoblastoma. *Cancer Causes Control.* 2012;23(9):1567–1575.
  40. Heck JE, Omidakhsh N, Azary S, et al. A case–control study of sporadic retinoblastoma in relation to maternal health conditions and reproductive factors: a report from the Children’s Oncology Group. *BMC Cancer.* 2015;15(1):735.
  41. Infante-Rivard C, Fortier I, Olson E. Markers of infection, breast-feeding and childhood acute lymphoblastic leukaemia. *Br J Cancer.* 2000;83(11):1559–1564.
  42. Kaatsch P, Scheidemann-Wesp U, Schüz J. Maternal use of antibiotics and cancer in the offspring: results of a case-control study in Germany. *Cancer Causes Control CCC.* 2010;21(8):1335–1345.
  43. Kelty E, Hulse G. A retrospective cohort study of birth outcomes in neonates exposed to naltrexone in utero: a comparison with methadone-, buprenorphine- and non-opioid-exposed neonates. *Drugs.* 2017;77(11):1211–1219.
  44. Kinnier-Wilson LM, Kneale GW, Stewart AM. Childhood cancer and pregnancy drugs. *Lancet Lond Engl.* 1981;2(8241):314–315.
  45. Klip H, Burger CW, de Kraker J, et al. Risk of cancer in the offspring of women who underwent ovarian stimulation for IVF. *Hum Reprod.* 2001;16(11):2451–2458.
  46. Kramer S, Ward E, Meadows AT, et al. Medical and drug risk factors associated with neuroblastoma: a case-control study. *J Natl Cancer Inst.* 1987;78(5):797–804.
  47. Kuijten RR, Bunin GR, Nass CC, et al. Gestational and familial risk factors for childhood astrocytoma: results of a case-control study. *Cancer Res.* 1990;50(9):2608–2612.
  48. Kumar A, Vashist M, Rathee R. Maternal factors and risk of childhood leukemia. *Asian Pac J Cancer Prev.* 2014;15(2):781–784.
  49. Kwan ML, Metayer C, Crouse V, et al. Maternal illness and drug/medication use during the period surrounding pregnancy and risk of childhood leukemia among offspring. *Am J Epidemiol.* 2007;165(1):27–35.
  50. Li FP, Fine W, Jaffe N, et al. Offspring of patients treated for cancer in childhood. *J Natl Cancer Inst.* 1979;62(5):1193–1197.
  51. Linet MS, Gridley G, Cnattingius S, et al. Maternal and perinatal risk factors for childhood brain tumors (Sweden). *Cancer Causes Control CCC.* 1996;7(4):437–448.
  52. McCredie M, Maisonneuve P, Boyle P. Antenatal risk factors for malignant brain tumours in New South Wales children. *Int J Cancer.* 1994;56(1):6–10.
  53. McKinney PA, Cartwright RA, Stiller CA, et al. Inter-Regional Epidemiological Study of Childhood Cancer (IRESCC): childhood cancer and the consumption of debendox and related drugs in pregnancy. *Br J Cancer.* 1985;52(6):923–929.
  54. McKinney PA, Cartwright RA, Saiu JM, et al. The Inter-Regional Epidemiological Study of Childhood Cancer (IRESCC): a case control study of aetiological factors in leukaemia and lymphoma. *Arch Dis Child.* 1987;62(3):279–287.
  55. McKinney PA, Juszcak E, Findlay E, et al. Pre- and perinatal risk factors for childhood leukaemia and other malignancies: a Scottish case control study. *Br J Cancer.* 1999;80(11):1844–1851.
  56. Michalek AM, Buck GM, Nasca PC, et al. Gravid health status, medication use, and risk of neuroblastoma. *Am J Epidemiol.* 1996;143(10):996–1001.
  57. Munzer C, Menegaux F, Lacour B, et al. Birth-related characteristics, congenital malformation, maternal reproductive history and neuroblastoma: the ESCALE study (SFCE). *Int J Cancer.* 2008;122(10):2315–2321.
  58. Naumburg E, Bellocco R, Cnattingius S, et al. Perinatal exposure to infection and risk of childhood leukemia. *Med Pediatr Oncol.* 2002;38(6):391–397.
  59. Ognjanovic S, Blair C, Spector LG, et al. Analgesic use during pregnancy and risk of infant leukaemia: a Children’s Oncology Group study. *Br J Cancer.* 2011;104(3):532–536.
  60. Olshan AF, Breslow NE, Falletta JM, et al. Risk factors for Wilms tumor. Report from the National Wilms Tumor Study. *Cancer.* 1993;72(3):938–944.
  61. Olshan AF, Smith J, Cook MN, et al. Hormone and fertility drug use and the risk of neuroblastoma: a report from the Children’s Cancer Group and the Pediatric Oncology Group. *Am J Epidemiol.* 1999;150(9):930–938.
  62. Ou SX, Han D, Severson RK, et al. Birth characteristics, maternal reproductive history, hormone use during pregnancy, and risk of childhood acute lymphocytic leukemia by immunophenotype (United States). *Cancer Causes Control CCC.* 2002;13(1):15–25.
  63. Pombo-de-Oliveira MS, Koifman S, Brazilian Collaborative Study Group of Infant Acute Leukemia. Infant acute leukemia and maternal exposures during pregnancy. *Cancer Epidemiol Biomarkers Prev.* 2006;15(12):2336–2341.
  64. Preston-Martin S, Yu MC, Benton B, et al. *N*-Nitroso compounds and childhood brain tumors: a case-control study. *Cancer Res.* 1982;42(12):5240–5245.
  65. Puumala SE, Ross JA, Olshan AF, et al. Reproductive history, infertility treatment, and the risk of acute leukemia in children with Down syndrome: a report from the Children’s Oncology Group. *Cancer.* 2007;110(9):2067–2074.
  66. Robison LL, Buckley JD, Daigle AE, et al. Maternal drug use and risk of childhood nonlymphoblastic leukemia among offspring. An epidemiologic investigation implicating marijuana (a report from the Childrens Cancer Study Group). *Cancer.* 1989;63(10):1904–1911.
  67. Rodvall Y, Pershagen G, Hrubec Z, et al. Prenatal X-ray exposure and childhood cancer in Swedish twins. *Int J Cancer.* 1990;46(3):362–365.
  68. Roman E, Ansell P, Bull D. Leukaemia and non-Hodgkin’s lymphoma in children and young adults: are prenatal and neonatal factors important determinants of disease? *Br J Cancer.* 1997;76(3):406–415.
  69. Ross JA, Potter JD, Reaman GH, et al. Maternal exposure to potential inhibitors of DNA topoisomerase II and infant

- leukemia (United States): a report from the Children's Cancer Group. *Cancer Causes Control*. 1996;7(6):581–590.
70. Ross JA, Xie Y, Davies SM, et al. Prescription medication use during pregnancy and risk of infant leukemia (United States). *Cancer Causes Control CCC*. 2003;14(5):447–451.
  71. Salonen T. Prenatal and perinatal factors in childhood cancer. *Ann Clin Res*. 1976;8(1):27–42.
  72. Sanders BM, Draper GJ. Childhood cancer and drugs in pregnancy. *Br Med J*. 1979;1(6165):717–718.
  73. Schüz J, Kaatsch P, Kaletsch U, et al. Association of childhood cancer with factors related to pregnancy and birth. *Int J Epidemiol*. 1999;28(4):631–639.
  74. Schüz J, Kaletsch U, Meinert R, et al. Risk factors for neuroblastoma at different stages of disease. Results from a population-based case-control study in Germany. *J Clin Epidemiol*. 2001;54(7):702–709.
  75. Schüz J, Wehkopf T, Kaatsch P. Medication use during pregnancy and the risk of childhood cancer in the offspring. *Eur J Pediatr*. 2007;166(5):433–441.
  76. Shankar S, Davies S, Giller R, et al. In utero exposure to female hormones and germ cell tumors in children. *Cancer*. 2006;106(5):1169–1177.
  77. Shaw AK, Infante-Rivard C, Morrison HI. Use of medication during pregnancy and risk of childhood leukemia (Canada). *Cancer Causes Control*. 2004;15(9):931–937.
  78. Shu XO, Nesbit ME, Buckley JD, et al. An exploratory analysis of risk factors for childhood malignant germ-cell tumors: report from the Childrens Cancer Group (Canada, United States). *Cancer Causes Control*. 1995;6(3):187–198.
  79. Spector LG, Brown MB, Wantman E, et al. Association of in vitro fertilization with childhood cancer in the United States. *JAMA Pediatr*. 2019;173(6):e190392.
  80. Ståhlberg K, Haglund B, Strömberg B, et al. Prenatal exposure to medicines and the risk of childhood brain tumor. *Cancer Epidemiol*. 2010;34(4):400–404.
  81. Søgaard SH, Rostgaard K, Kamper-Jørgensen M, et al. Maternal diabetes and risk of childhood acute lymphoblastic leukaemia in the offspring. *Br J Cancer*. 2018;118(1):117–120.
  82. Tegethoff M, Olsen J, Schaffner E, et al. Asthma during pregnancy and clinical outcomes in offspring: a National Cohort Study. *Pediatrics*. 2013;132(3):483–491.
  83. Thapa PB, Whitlock JA, Brockman Worrell KG, et al. Prenatal exposure to metronidazole and risk of childhood cancer: a retrospective cohort study of children younger than 5 years. *Cancer*. 1998;83(7):1461–1468.
  84. Tournaire M, Epelboin S, Devouche E, et al. Adverse health effects in children of women exposed in utero to diethylstilbestrol (DES). *Therapie*. 2016;71(4):395–404.
  85. van Duijn CM, van Steensel-Moll HA, Coebergh JW, et al. Risk factors for childhood acute non-lymphocytic leukemia: an association with maternal alcohol consumption during pregnancy? *Cancer Epidemiol Biomarkers Prev*. 1994;3(6):457–460.
  86. van Steensel-Moll HA, Valkenburg HA, Vandenbroucke JP, et al. Are maternal fertility problems related to childhood leukaemia? *Int J Epidemiol*. 1985;14(4):555–559.
  87. Walsh LK, Donelle J, Dodds L, et al. Health outcomes of young children born to mothers who received 2009 pandemic H1N1 influenza vaccination during pregnancy: retrospective cohort study. *BMJ*. 2019;366:14151.
  88. Wang Y, Gao P, Liang G, et al. Maternal prenatal exposure to environmental factors and risk of childhood acute lymphocytic leukemia: a hospital-based case-control study in China. *Cancer Epidemiol*. 2019;58:146–152.
  89. Wen W, Shu XO, Potter JD, et al. Parental medication use and risk of childhood acute lymphoblastic leukemia. *Cancer*. 2002;95(8):1786–1794.
  90. Zanrosso CW, Emerenciano M, Goncalves BADA, et al. N-Acetyltransferase 2 polymorphisms and susceptibility to infant leukemia with maternal exposure to dipyrone during pregnancy. *Cancer Epidemiol Biomarkers Prev*. 2010;19(12):3037–3043.
  91. Birch JM, Hartley AL, Teare MD, et al. The Inter-Regional Epidemiological Study of Childhood Cancer (IRESCC): case-control study of children with central nervous system tumours. *Br J Neurosurg*. 1990;4(1):17–25.
  92. Bradbury BD, Jick H. In vitro fertilization and childhood retinoblastoma. *Br J Clin Pharmacol*. 2004;58(2):209–211.
  93. Bunin GR, Kramer S, Marrero O, et al. Gestational risk factors for Wilms' tumor: results of a case-control study. *Cancer Res*. 1987;47(11):2972–2977.
  94. Bunin GR, Meadows AT, Emanuel BS, et al. Pre- and postconception factors associated with sporadic heritable and nonheritable retinoblastoma. *Cancer Res*. 1989;49(20):5730–5735.
  95. Foix-L'Hélias L, Aerts I, Marchand L, et al. Are children born after infertility treatment at increased risk of retinoblastoma? *Hum Reprod*. 2012;27(7):2186–2192.
  96. Gholami A, Salarilak S, Hejazi S, et al. Parental risk factors of childhood acute leukemia: a case-control study. *J Res Health Sci*. 2011;11(2):69–76.
  97. Gold E, Gordis L, Tonascia J, et al. Risk factors for brain tumors in children. *Am J Epidemiol*. 1979;109(3):309–319.
  98. Gradel KO, Kaerlev L. Antibiotic use from conception to diagnosis of child leukaemia as compared to the background population: a nested case-control study. *Pediatr Blood Cancer*. 2015;62(7):1155–1161.
  99. Grufferman S, Wang HH, DeLong ER, et al. Environmental factors in the etiology of rhabdomyosarcoma in childhood. *J Natl Cancer Inst*. 1982;68(1):107–113.
  100. Gurney JG, Mueller BA, Preston-Martin S, et al. A study of pediatric brain tumors and their association with epilepsy and anticonvulsant use. *Neuroepidemiology*. 1997;16(5):248–255.
  101. Hargreave M, Jensen A, Nielsen TSS, et al. Maternal use of fertility drugs and risk of cancer in children—a nationwide population-based cohort study in Denmark. *Int J Cancer*. 2015;136(8):1931–1939.
  102. Hargreave M, Jensen A, Hansen MK, et al. Association between fertility treatment and cancer risk in children. *JAMA*. 2019;322(22):2203–2210.
  103. Hartley AL, Birch JM, McKinney PA, et al. The Inter-Regional Epidemiological Study of Childhood Cancer (IRESCC): case control study of children with bone and soft tissue sarcomas. *Br J Cancer*. 1988;58(6):838–842.
  104. Heck JE, Meyers TJ, Lombardi C, et al. Case-control study of birth characteristics and the risk of hepatoblastoma. *Cancer Epidemiol*. 2013;37(4):390–395.
  105. Howe GR, Burch JD, Chiarelli AM, et al. An exploratory case-control study of brain tumors in children. *Cancer Res*. 1989;49(15):4349–4352.
  106. Johnston HE, Mann JR, Williams J, et al. The Inter-Regional, Epidemiological Study of Childhood Cancer (IRESCC): case-control study in children with germ cell tumours. *Carcinogenesis*. 1986;7(5):717–722.

107. Källén B, Finnström O, Lindam A, et al. Cancer risk in children and young adults conceived by in vitro fertilization. *Pediatrics*. 2010;126(2):270–276.
108. Lerner-Geva L, Boyko V, Ehrlich S, et al. Possible risk for cancer among children born following assisted reproductive technology in Israel. *Pediatr Blood Cancer*. 2017;64(4):e26292.
109. Lupo PJ, Danysh HE, Skapek SX, et al. Maternal and birth characteristics and childhood rhabdomyosarcoma: a report from the Children's Oncology Group. *Cancer Causes Control*. 2014;25(7):905–913.
110. Mallol-Mesnard N, Menegaux F, Lacour B, et al. Birth characteristics and childhood malignant central nervous system tumors: the ESCALE study (French Society for Childhood Cancer). *Cancer Detect Prev*. 2008;32(1):79–86.
111. McLaughlin CC, Baptiste MS, Schymura MJ, et al. Maternal and infant birth characteristics and hepatoblastoma. *Am J Epidemiol*. 2006;163(9):818–828.
112. Ognjanovic S, Puumala S, Spector LG, et al. Maternal health conditions during pregnancy and acute leukemia in children with Down syndrome: a Children's Oncology Group study. *Pediatr Blood Cancer*. 2009;52(5):602–608.
113. Operskalski EA, Preston-Martin S, Henderson BE, et al. A case-control study of osteosarcoma in young persons. *Am J Epidemiol*. 1987;126(1):118–126.
114. Petridou ET, Sergentanis TN, Panagopoulou P, et al. In vitro fertilization and risk of childhood leukemia in Greece and Sweden. *Pediatr Blood Cancer*. 2012;58(6):930–936.
115. Puumala SE, Spector LG, Wall MM, et al. Infant leukemia and parental infertility or its treatment: a Children's Oncology Group report. *Hum Reprod*. 2010;25(6):1561–1568.
116. Puumala SE, Ross JA, Wall MM, et al. Pediatric germ cell tumors and parental infertility and infertility treatment: a Children's Oncology Group report. *Cancer Epidemiol*. 2011;35(5):e25–e31.
117. Puumala SE, Ross JA, Feusner JH, et al. Parental infertility, infertility treatment and hepatoblastoma: a report from the Children's Oncology Group. *Hum Reprod*. 2012;27(6):1649–1656.
118. Reigstad MM, Larsen IK, Myklebust TÅ, et al. Risk of cancer in children conceived by assisted reproductive technology. *Pediatrics*. 2016;137(3):e20152061.
119. Rudant J, Amigou A, Orsi L, et al. Fertility treatments, congenital malformations, fetal loss, and childhood acute leukemia: the ESCALE study (SFCE). *Pediatr Blood Cancer*. 2013;60(2):301–308.
120. Sharpe CR, Franco EL. Use of dipyron during pregnancy and risk of Wilms' tumor. Brazilian Wilms' Tumor Study Group. *Epidemiol Camb Mass*. 1996;7(5):533–535.
121. Shaw AK, Li P, Infante-Rivard C. Early infection and risk of childhood brain tumors (Canada). *Cancer Causes Control CCC*. 2006;17(10):1267–1274.
122. Stewart A, Webb J, Hewitt D. A survey of childhood malignancies. *Br Med J*. 1958;1(5086):1495–1508.
123. Sundh KJ, Henningsen A-KA, Källén K, et al. Cancer in children and young adults born after assisted reproductive technology: a Nordic cohort study from the Committee of Nordic ART and Safety (CoNARTaS). *Hum Reprod*. 2014;29(9):2050–2057.
124. Wainstock T, Walfisch A, Shoham-Vardi I, et al. Fertility treatments and pediatric neoplasms of the offspring: results of a population-based cohort with a median follow-up of 10 years. *Am J Obstet Gynecol*. 2017;216(3):314.e1–314.e14.
125. Moher D, Liberati A, Tetzlaff J, et al. Preferred reporting items for systematic reviews and meta-analyses: the PRISMA statement. *PLoS Med*. 2009;6(7):e1000097.
126. Guyatt GH, Oxman AD, Montori V, et al. GRADE guidelines: 5. Rating the quality of evidence—publication bias. *J Clin Epidemiol*. 2011;64(12):1277–1282.
127. Freemantle N, Calvert M, Wood J, et al. Composite outcomes in randomized trials: greater precision but with greater uncertainty? *JAMA*. 2003;289(19):2554–2559.
128. Steenland K, Bray I, Greenland S, et al. Empirical Bayes adjustments for multiple results in hypothesis-generating or surveillance studies. *Cancer Epidemiol Biomarkers Prev*. 2000;9(9):895–903.
129. FDA Pregnancy Outcomes Working Group. *Reviewer Guidance. Evaluating the Risks of Drug Exposure in Human Pregnancies*. Rockville, MD: U.S. Department of Health and Human Services. Food and Drug Administration. <https://www.fda.gov/media/71368/download>. Published 2005. Accessed May 16, 2021.
130. Shepard TH. "Proof" of human teratogenicity. *Teratology*. 1994;50(2):97–98.
131. Birch JM, Marsden HB. A classification scheme for childhood cancer. *Int J Cancer*. 1987;40(5):620–624.
132. Wei Y, Schatten H, Sun Q-Y. Environmental epigenetic inheritance through gametes and implications for human reproduction. *Hum Reprod Update*. 2015;21(2):194–208.
133. Wilcox AJ. *The Creative Biology of Human Reproduction*. In: *Fertility and pregnancy: an Epidemiologic Perspective*. Oxford, UK: Oxford University Press; 2010:3–25.
134. Lévesque LE, Hanley JA, Kezouh A, et al. Problem of immortal time bias in cohort studies: example using statins for preventing progression of diabetes. *BMJ*. 2010;340:b5087–b5087.
135. Schneeweiss S, Rassen JA, Brown JS, et al. Graphical depiction of longitudinal study designs in health care databases. *Ann Intern Med*. 2019;170(6):398–406.
136. Grzeskowiak LE, Gilbert AL, Morrison JL. Exposed or not exposed? Exploring exposure classification in studies using administrative data to investigate outcomes following medication use during pregnancy. *Eur J Clin Pharmacol*. 2012;68(5):459–467.
137. Rothman KJ, Greenland S, Lash TL. *Validity in epidemiologic studies*. In: *Modern Epidemiology*. 3rd ed. Philadelphia, PA: Lippincott Williams & Wilkins; 2008:128–147.
138. Lash TL, Fox MP, MacLehose RF, et al. Good practices for quantitative bias analysis. *Int J Epidemiol*. 2014;43(6):1969–1985.
139. Wilcox AJ, Weinberg CR, Basso O. On the pitfalls of adjusting for gestational age at birth. *Am J Epidemiol*. 2011;174(9):1062–1068.
140. Glymour MM, Greenland S. *Causal Diagrams*. In: *Modern epidemiology*. Philadelphia, PA: Lippincott Williams & Wilkins; 2008:183–209.
141. Greenland S. Modeling and variable selection in epidemiologic analysis. *Am J Public Health*. 1989;79(3):340–349.
142. Wood ME, Lapane KL, van Gelder MMHJ, et al. Making fair comparisons in pregnancy medication safety studies: an overview of advanced methods for confounding control. *Pharmacoepidemiol Drug Saf*. 2018;27(2):140–147.
143. Lawlor DA, Tilling K, Davey Smith G. Triangulation in etiological epidemiology. *Int J Epidemiol*. 2016;45(6):1866–1886.
144. Cohen JM, Wood ME, Hernández-Díaz S, et al. Paternal antidepressant use as a negative control for maternal use: assessing familial confounding on gestational length and

- anxiety traits in offspring. *Int J Epidemiol.* 2019;48(5): 1665–1672.
145. Linabery AM, Erhardt EB, Fonstad RK, et al. Infectious, autoimmune and allergic diseases and risk of Hodgkin lymphoma in children and adolescents: a Children's Oncology Group study. *Int J Cancer.* 2014;135(6): 1454–1469.
146. Sjölander A, Frisell T, Kuja-Halkola R, et al. Carryover effects in sibling comparison designs. *Epidemiology.* 2016; 27(6):852–858.
147. Smith PG, Rodrigues LC, Fine PE. Assessment of the protective efficacy of vaccines against common diseases using case-control and cohort studies. *Int J Epidemiol.* 1984; 13(1):87–93.