



OPEN

Socioeconomic inequalities in children's weight, height and BMI trajectories in Norway

Teferi Mekonnen^{1✉}, Eleni Papadopoulou², Onyebuchi A. Arah³, Anne Lise Brantsæter², Nanna Lien¹ & Mekdes K. Gebremariam¹

Studies exploring when social inequalities in body mass index (BMI) and its composites emerge and how these evolve with age are limited. Thus, this study explored parental income and education related inequalities in children's weight, height, weight velocity and body mass index among Norwegian children from 1 month to 8 years. The study population included 59,927 family/children pairs participating in the Norwegian Mother, Father, and Child Cohort Study. Growth was modelled using the Jenss–Bayley model and linear mixed effects analyses were conducted. Maternal and paternal educational differences in children's weight and BMI trajectories emerged during infancy, continuing to age 8 years. Parental income-related inequalities in children's weight were observed from the age of 1 month to 4 years for maternal and up to 1 year for paternal income-related differences but then disappeared. Parental income-related inequalities in child's BMI were observed from 18 months to 8 years for maternal income, and from 9 months to 8 years for paternal income-related differences. These results suggest that social inequalities in children's BMI present early in infancy and continue to 8 years of age. The inequalities sometimes differed by indicator of socioeconomic position used. Interventions to combat these inequalities early in life are, thus needed.

Socioeconomic inequalities in overweight (OW)/obesity (OB) among children and adolescents are prevalent^{1–3} and represent important public health concerns. Tackling these inequalities is a key public health goal because of the short and long-term adverse health effects of early life OW and OB^{4,5}, including the tracking of body weight from childhood into adolescence⁶ and adulthood^{7–11}. Socioeconomic inequalities in children's BMI trajectories can vary with children's age because of the socioeconomic gradients in various perinatal and early life factors, including breastfeeding¹², complementary feeding practices^{13,14}, childhood dietary behaviours^{15–18} and sedentary behaviours¹⁹. Tackling such inequalities requires an understanding of when in early life they emerge and how they evolve with increasing age.

Few studies with available longitudinal data from birth to childhood have explored how early socioeconomic inequalities in body mass index (BMI) trajectories emerge and how they evolve throughout childhood. Evidence from these studies revealed mixed results regarding the timing at which distinct BMI trajectories by socioeconomic status emerge^{3,20–26}. Therefore, there is a need for more longitudinal studies with data from birth and with long periods of follow-up. Additionally, BMI changes could be attributable to changes in weight, height or both. Few studies with data from birth to childhood have considered weight and height measurements along with BMI^{20,24}. Thus, exploring inequalities in children's weight and height trajectories in addition to BMI could help to understand the roots of the inequalities in BMI or OW/OB among children. Another important aspect that helps to better explore the origin of inequalities in children's BMI could be exploring socioeconomic inequalities in the rate of child growth per unit of time (e.g. weight gain velocities). In this regard, there is a lack of studies assessing inequalities in weight gain velocities.

In addition, it is important to take into account different indicators of socioeconomic position (SEP) while assessing socioeconomic inequalities in OW/OB among children, as different SEP indicators might influence the pathways leading to health inequalities in different manners. For example, income could influence the choice of healthy vs unhealthy lifestyle behaviors through the ability to afford healthier food alternatives. On the other hand, education could influence food choice by equipping parents with skills to gain better access to health information and to critically evaluate this information²⁷. Most studies have used different SEP indicators

¹Department of Nutrition, Faculty of Medicine, Institute of Basic Medical Sciences, University of Oslo, Oslo, Norway. ²Section of Environmental Exposure and Epidemiology, Norwegian Institute of Public Health, Oslo, Norway. ³Department of Epidemiology and Department of Statistics, University of California, Los Angeles (UCLA), Los Angeles, USA. ✉email: t.m.yitayew@medisin.uio.no

interchangeably^{1,21,26,28}. However, studies are showing the independent influence on anthropometric markers exerted by income and education. For instance, studies among adults in the US demonstrated that BMI and skinfold thickness among women were independently associated with education, but not with income; among men these anthropometric markers were independently associated with income only^{29,30}. Another study among Brazilian adults showed that in less developed regions obesity among women was associated with both income and education, but in more economically developed regions, obesity among women was associated only with education. Among men, obesity was positively associated with income and to a certain extent with education³¹. In addition, limited evidence of a potential interaction between SEP indicators (i.e. education and income) on its association with OW/OB exists³².

Therefore, this study aimed to examine the associations between various measures of SEP and growth trajectories (i.e. BMI, weight, weight gain velocity, and height) among Norwegian children from birth to 8 years of age using data from one of the largest prospective pregnancy cohorts in the world.

Methods

Study design and sample. The Norwegian Mother, Father and Child Cohort Study (MoBa) is a population-based pregnancy cohort study conducted by the Norwegian Institute of Public Health³³. Participants were recruited from all over Norway from 1999 to 2008. The invitation to participate was sent to pregnant women prior to the first ultrasound examination offered to all free of charge. The women consented to participation in 41% of the pregnancies. The cohort now includes 114,500 children, 95,200 mothers and 75,200 fathers. Included women received questionnaires at 17, 22 and 30 weeks of pregnancy, and when the child was 6 months, 18 months, 3 years, 5 years, 7 years and 8 years old. The current study is based on version 12 of the quality-assured data files released for research in January 2019, with linkage to the Medical Birth Registry of Norway, the national health registry containing information about all births in Norway. The establishment of MoBa and the initial data collection was based on a license from the Norwegian Data Protection Agency and approval from The Regional Committees for Medical and Health Research Ethics. The MoBa cohort is now based on regulations related to the Norwegian Health Registry Act. The current study was approved by the Regional Committees for Medical and Health Research Ethics (REK 2018/470). Written informed consent was obtained from each MoBa participant upon recruitment. All experiments were performed in accordance with relevant guidelines and regulations.

After exclusion of women with multiple gestations, malformations and chromosomal abnormalities, 83,475 mothers with live-born singleton births remained. Of these, 70,913 had complete data on maternal and paternal educational level and income status. Further exclusions were made based on missing data on birth weight and length, missing postnatal weight or height/length measurements, or missing data for the included covariates, yielding a final sample of 59,927 out of the 83,475 (71.8%). Supplementary Figure S1 shows the inclusion chart of the participants.

Measures. Parental socioeconomic position was measured by self-reported maternal and paternal education and income during pregnancy (baseline questionnaire). Maternal and paternal educational status was defined into three categories as low (≤ 12 years of education), medium (13–16 years of education) and high (≥ 17 years of education). We have used average household income per year done in accordance with data from the statistics Norway at the time of baseline data collection (1999–2008) to define income status. Maternal and paternal income were defined as earned “below mean income” if their annual income is $< 300,000$ NOK per year and earned “greater than/equal to mean income” if their annual income is $\geq 300,000$ NOK per year.

Anthropometric measurements of children in Norway are routinely conducted by health professionals at well child clinics (i.e. up to 5 years) and at school health services (i.e. after 5 years) according to guidelines from the Norwegian directorate of health³⁴.

Mothers reported the weight and length/height of their child at 11 age points; 6 weeks, 3 months, 6 months, 8 months, 1 year, 1.5 years, 2 years, 3 years, 5 years, 7 years, 8 years (details on anthropometric measurements described in Supplementary Table S1). Birth weight and length data were obtained from the Medical birth registry of Norway. From 6 weeks to 18 months, mothers were asked to refer to their children’s health card, while no specification was provided for measurements from 2 to 8 years.

Implausible anthropometric values were identified and excluded by separately implementing two different methods; (1) by comparing with the WHO Growth standards, as a weight-for-age or height-for-age z-score < 6 SD below or > 6 SD (5 SD for weight) above the mean³⁵, and (2) by identifying measured values with a > 3 SD and < -3 SD difference from the predicted value as derived from the Jenss–Bayley growth curve model. After exclusion of implausible values, 498,393 and 488,334 repeated measurements of weight and length/height were available for our study population.

Age and gender standardized BMI (in kg/m^2), weight (in grams (g)), weight gain velocities (in g/month) and height (in centimeters (cm)) growth trajectories were the outcome variables. Individual growth trajectories for weight and length/height were obtained by modelling the overall growth from the age of 1 month to 8 years using the Jenss–Bayley growth curve model³⁶. A mixed-effect approach using the stochastic approximation of expectation–maximization (SAEM) algorithm were applied to assess individual growth trajectories³⁷. Then, weight, weight gain velocities, and length/height, BMI (kg/m^2) at 14 age points (1 month, 2 months, 3 months, 6 months, 9 months, 12 months and 18 months, 2 years, 3 years, 4 years, 5 years, 6 years, 7 years and 8 years) were calculated using the growth model derivatives. Given the high correlation between the measured and predicted height in the different age points (concordance correlation coefficients range $\rho_c = 0.77$ – 0.97) and weight (concordance correlation coefficients range $\rho_c = 0.81$ – 0.98) (Supplementary Table S2), the outcome variables used in this study were based on the predicted anthropometrics derived by using the growth model derivatives.

Socio-demographic variables	N (%)
Child gender	
Male	30,738 (51.3)
Female	29,189 (48.7)
Maternal marital status	
Living with partner	58,468 (97.6)
Others	1459 (2.4)
Parity	
Primiparous	27,610 (46.1)
Multiparous	32,317 (53.9)
Maternal educational status*	
Low	18,149 (30.3)
Medium	25,758 (43.0)
High	16,020 (26.7)
Paternal educational status*	
Low	27,197 (45.4)
Medium	17,407 (29.1)
High	15,323 (25.6)
Maternal income**	
Below mean income	31,129 (63.6)
Greater than/equal to mean income	21,798 (36.4)
Paternal income**	
Below mean income	20,504 (34.2)
Greater than/equal to mean income	39,423 (65.8)

Table 1. Socio-demographic characteristics of family/child pairs included in this study (N = 59,927). *Low: completed ≤ 12 years of education, medium completed 13–16 years of education, and high completed ≥ 17 years of education. **Below mean income < 300,000 Norwegian Krone per year and greater than/equal to mean income $\geq 300,000$ Norwegian Krone per year.

Childhood weight status (not overweight/obese, overweight/obese) at the age 2 to 8 years was defined by applying the age and gender specific International Obesity Task Force BMI cut-offs (kg/m^2)³⁸ in the predicted BMI values.

Statistical analysis. Graphical illustration of the overall distributions of children's anthropometric data (i.e. Weight, weight gain velocity, height, and BMI) at the ages of 1 month to 8 years at 14-time points was created. Linear mixed effect models with random intercept at the child-level and a random slope for age were used to analyze associations between SEP indicators and children's anthropometry at 14 time points between ages of 1 month to 8 years. The associations between SEP indicators and children's anthropometry at 14 time points were illustrated using the high SEP position as a reference. The average marginal effects of SEP indicators on children's anthropometry at 14 time points were estimated. Then, the estimated marginal effects were presented in tables and graphs. The other SEP indicator was mutually adjusted for in the analyses in order to estimate the independent effect of each SEP indicator (parental education, parental income). The interaction between the SEP indicators was tested. Adjustment for child gender, birth weight, parity, maternal civil status, and gestational age was made. Multicollinearity was checked. The main analyses were performed with Stata version 16 statistical software (Stata Corporation, College Station, Texas, USA). R version 3.2.2^{39,40} was used for the growth models. The p-value for statistical significance was set to $P < 0.05$.

Results

Among 59,927 families /child pairs included in the study, 30.3% and 63.6% of the children had mothers with low education and who earned below mean income, respectively. The proportion of children with low paternal education and fathers who earned below mean income were 45.4% and 34.2%, respectively (Table 1).

The percentage of those with OW/OB among children aged 2 years to 8 years was higher for the lowest socio-economic groups for all the SEP indicators used (Supplementary Table S3). The overall shape and distribution of children's weight, weight gain velocity, height and BMI from age 1 month to 8 years (14-time points) is shown in the violin plot (Supplementary Fig. S2).

SEP and child weight and weight gain velocity up to 8 years. Maternal educational level was inversely associated with children's weight from the age of 1 year onwards (Fig. 1). Children of low educated mothers on average weighed more from the age of 1 year onwards compared to their peers with high educated mothers (e.g. weighed; 18.6 g more (95% CI 2.4, 34.7 g) at the age of 1 year and 219.9 g more (95% CI 135.8, 304.0 g) at the age of 8 years). Children of medium educated mothers weighed more from the age of 2 years to 8 years compared to their peers with high-educated mothers (Fig. 1, Supplementary Table S4).

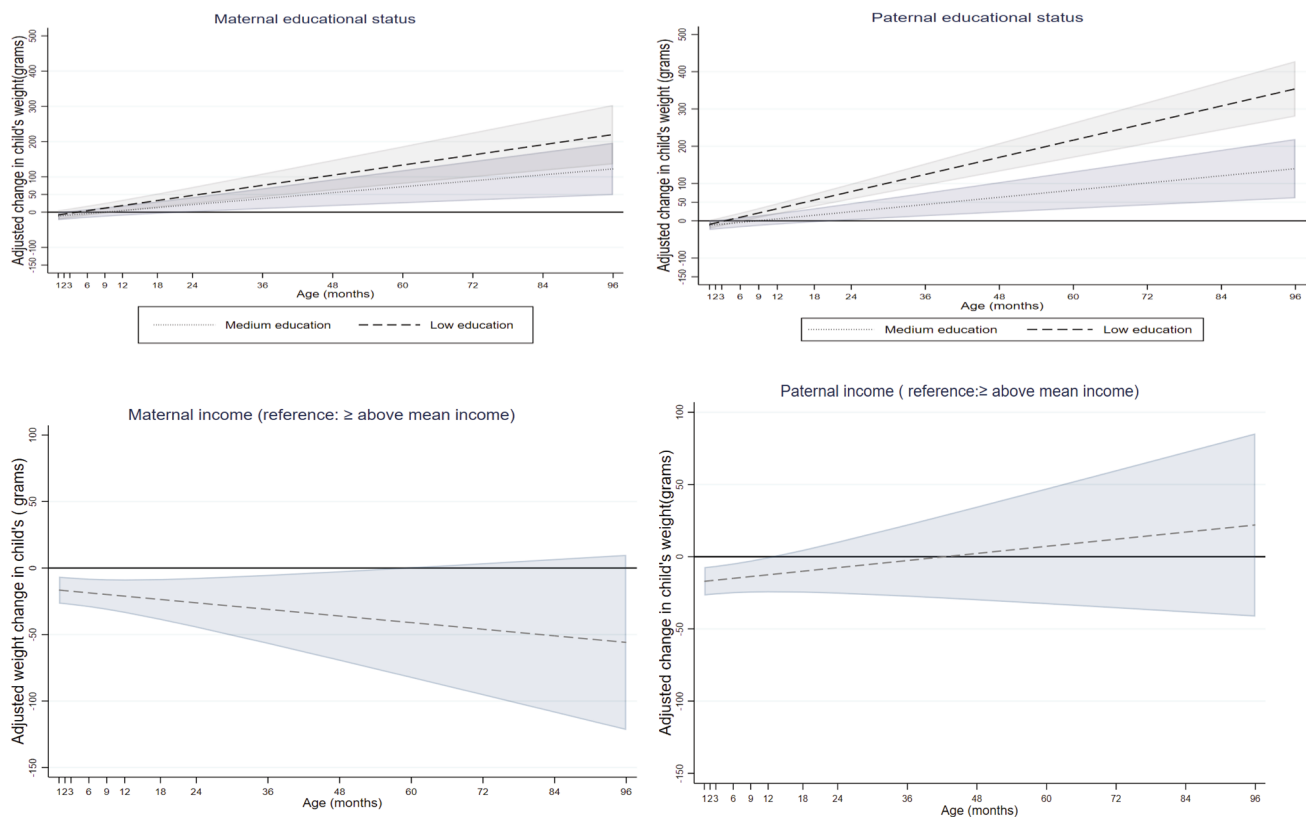


Figure 1. Associations between maternal and paternal education and income with children's weight in grams from 1 month to 8 year (β coefficients in dash and dot lines and 95% CIs in solid lines).

Paternal educational level was inversely associated with children's weight from the age of 9 months onwards (Fig. 1). Children of low educated fathers on average weighed more from the age of 9 months compared to their peers with high-educated fathers (e.g. weighed; 21.1 g more (95% CI 8.0, 34.1 g) at the age of 9 months and 354.1 g more (95% CI 279.8, 428.4 g) at 8 years). Children of fathers with medium educational level on average weighed more from the age of 2 years to 8 years compared to their peers with high educated-fathers (Fig. 1, Supplementary Table S4).

Maternal income was positively associated with children's weight from the age of 1 month up to 4 years (Fig. 1). Children of mothers who earned below mean income on average weighed less from the age of 1 month up to 4 years, compared to their peers with mothers who earned greater than/equal to mean income (e.g. weighed 16.6 g less (95% CI -26.8, -6.4) and 36.1 g less (95% CI -69.8, -2.3 g) at the age of 1 month and 4 years, respectively). This association was not present from the age of 5 years onwards (Fig. 1, Supplementary Table S4).

Paternal income was positively associated with children's weight from 1 month to 1 year; after 1 year, the paternal income gradient in children's weight was no longer significant (Fig. 1). Children of fathers who earned below mean income on average weighed less from the age of 1 month to 1 year, compared to their peers with fathers who earned greater than/equal to mean income (e.g. weighed 17.1 g less (95% CI -26.9, -7.2 g) at the age of 1 month and 12.5 g less 95% CI -24.7, -0.3 g) at 1 year age) (Fig. 1, Supplementary Table S4).

Children of low educated mothers on average had higher weight gain velocity from the age of 18 months to 6 years compared to their peers with high-educated mothers (e.g. gain 1.8 g/month more (95% CI 0.1, 3.5 g/month) at the age of 18 months and 2.5 g/month more (95% CI 0.0, 4.8 g/month) at age 6 years). No association was observed up to 18 months and after 7 years. Children of low educated fathers on average had higher weight gain velocity from 1 month to 8 years compared to their peers with high-educated fathers (e.g. gain 3.2 g/month more (95% CI 1.2, 5.1 g/month) at the age of 1 month and 4.3 g/month more 95% CI 1.3, 7.3 g/month) at age 8 years). Parental income was not associated with children's weight gain velocity at any of the age points assessed (Supplementary Table S4).

SEP and height among children aged up to 8 years. Maternal and paternal educational level were not associated with children's height at any of the age points assessed (Supplementary Table S4).

Maternal income was positively associated with children's height at the age of 1 month to 8 years (Fig. 2). Children of mothers who earned below mean income on average were shorter from the age of 1 month to 8 years compared to their peers with mothers who earned greater than /equal to mean income (e.g. 0.08 cm shorter (95% CI -0.14, -0.03 cm) at the age of 1 month and 0.37 cm shorter (95% CI -0.50, -0.25 cm) at the age of 8 years (Fig. 2, Supplementary Table S4).

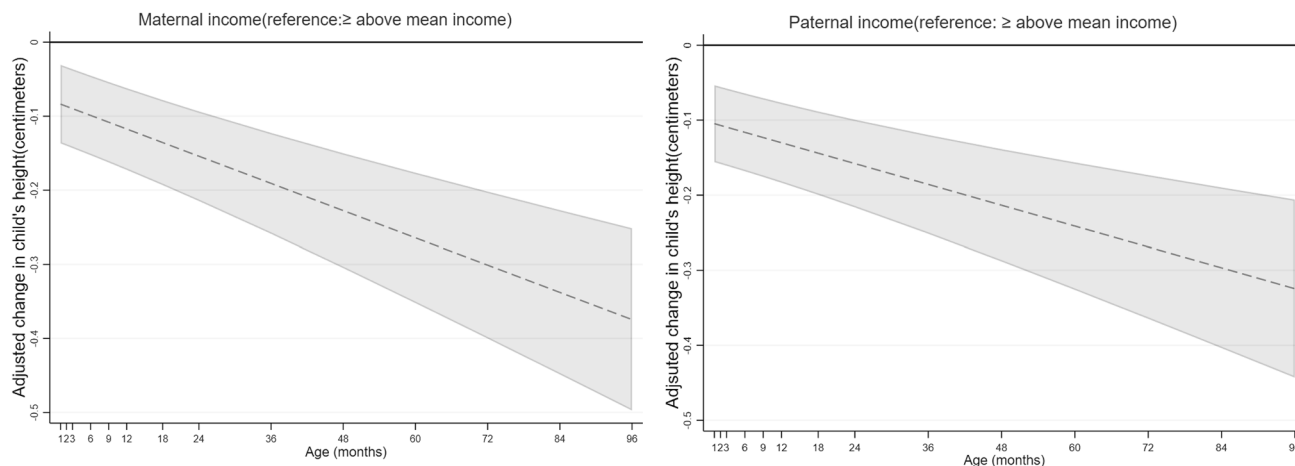


Figure 2. Associations between maternal and paternal income with children's height in centimeters from 1 month to 8 year (β coefficients in dash lines and 95% CIs in solid lines).

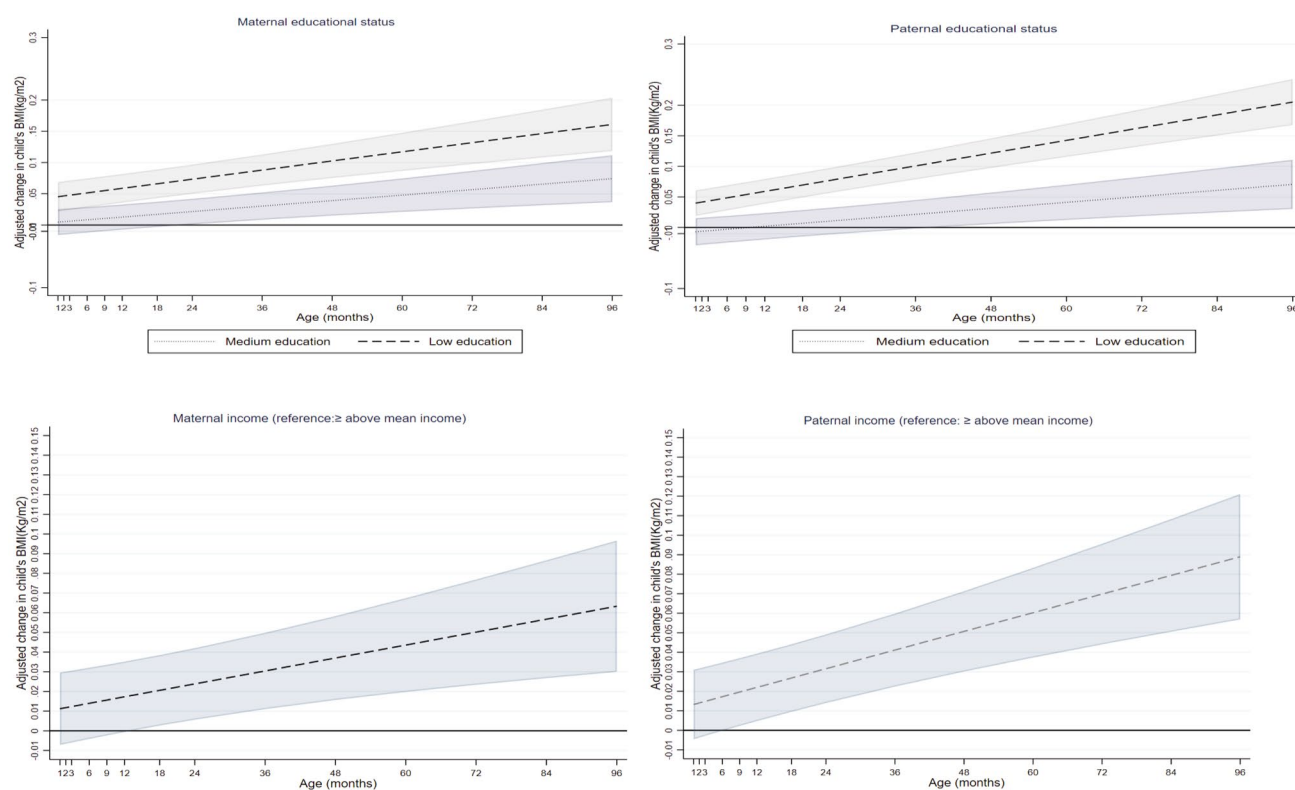


Figure 3. Associations between maternal and paternal education and income with children's BMI from 1 month to 8 year (β coefficients in dash and dot lines and 95% CIs in solid lines).

Paternal income was positively associated with children's height from the age of the 1 month to 8 years (Fig. 2). Children of fathers who earned below mean income on average were shorter from the age of the 1 month to 8 years compared to their peers with fathers who earned greater than /equal to mean income (e.g. 0.10 cm shorter (95% CI $-0.16, -0.05$ cm) at the 1st month and 0.32 cm shorter (95% CI $-0.44, -0.21$ cm) at 8 years (Fig. 2, Supplementary Table S4).

SEP and BMI among children up to 8 years. Maternal educational level was inversely associated with children's BMI (kg/m^2) from the age of 1 month to 8 years (Fig. 3). Children of low educated mothers on average had a higher BMI from the age of 1 month to 8 years compared to their peers with mothers with high education (e.g. 0.05 kg/m^2 higher (95% CI 0.02, 0.07 kg/m^2) at the 1st month and 0.16 kg/m^2 higher (95% CI 0.12, 0.20 kg/m^2) at 8 years). Children of mothers with medium educational level on average had a higher BMI from the age

of 18 months onwards compared to children with high-educated mothers (e.g. 0.02 kg/m² higher (95% CI 0.00, 0.04 kg/m²) at 18 months and 0.07 kg/m² higher (95% CI 0.04, 0.11 kg/m²) at 8 years) (Fig. 3, Supplementary Table S4).

Paternal educational level was inversely associated with their children's BMI from the age of 1 month to 8 years (Fig. 3). Children with low-educated fathers on average had a higher BMI from the age of 1 month to 8 years compared to their peers with fathers with high education (e.g. 0.04 kg/m² higher (95% CI 0.02, 0.06) at the age of 1 month and 0.21 kg/m² higher (95% CI 0.17, 0.24) at the age of 8 years). Children of fathers with medium educational level on average had a higher BMI from the age of 4 years to 8 years compared to their peers with high-educated fathers (e.g. 0.03 kg/m² higher (95% CI 0.01, 0.06) at 4 years and 0.07 kg/m² higher (95% CI 0.03, 0.11) at 8 years) (Fig. 3, Supplementary Table S4).

Maternal income was inversely associated with a children's BMI from the age of 18 months onwards (Fig. 3). Children with below average income mothers on average had a higher BMI from the age of 1 year onwards compared to their peers with mothers who earned greater than /equal to mean income (e.g. 0.02 kg/m² higher (95% CI 0.00, 0.04) at 18 months and 0.06 kg/m² higher (95% CI 0.03, 0.10) at 8 years) (Fig. 3, Supplementary Table S4).

Paternal income was inversely associated with children's BMI from the age of 9 months onwards (Fig. 3). Children of fathers who earned below mean income on average had a higher BMI than their counterparts with fathers who earned greater than /equal to mean income (e.g. 0.02 kg/m² higher (95% CI 0.00, 0.03) at 9 months and 0.09 kg/m² higher (95% CI 0.06, 0.12) at 8 years) (Fig. 3, Supplementary Table S4).

Results of interaction analyses revealed interaction effects at some age points in the association between SEP indicators and weight and BMI. For example, children of low educated mothers weighed more from the age of 18 months onwards compared to their peers with higher educated mothers, irrespective of maternal income. The same was found for paternal education but with an earlier onset, from 12 months onwards. Within low-income mothers, children of low educated mothers had a higher BMI growth trajectory up to 8 years compared to their peers with mothers with higher education. The same was found within mothers who earned greater than/equal to mean income but with a later onset, from 12 months onwards. Irrespective of paternal income status, children of low educated fathers had a higher BMI growth trajectory from the age of 1 month to 8 years compared to their peers of high-educated fathers (Supplementary Table S5).

Discussion

This study showed that there were socioeconomic differences in weight, height, and BMI trajectories among Norwegian children from the age of 1 month to 8 years, although the magnitudes of the differences were generally small. Maternal and paternal educational differences in children's weight and BMI trajectories emerged during infancy, continuing to age 8 years. Maternal and paternal educational differences in children's height were not found. Parental income-related differences in children's weight trajectory emerged at the age of 1 month and continued up to 4 years for maternal and up to 1 year for paternal income-related differences. Small parental income-related differences in children's height emerged at the age of 1 month, continuing to 8 years. Parental income-related differences in children's BMI emerged early (18 months and 9 months for maternal and paternal income, respectively) and continued up to 8 years. Interactions between education and income were found at some age points.

Previous studies with data from birth demonstrated that socioeconomic inequalities in children's BMI emerged from 1 month continuing to 5 years in France²⁰; from 4 to 10 years in England²¹; from 1 to 7 years in Denmark²⁴, and from 3 years to 4.5 years in the Netherlands³. The age at which socioeconomic inequalities in children's BMI trajectory emerged in our study were earlier than in studies from England²¹, Denmark²⁴ and the Netherlands³, but consistent with results from a French cohort study²⁰. The differences in the age at which these inequalities emerged might support the evidence that early life factors such as breast feeding, smoking during pregnancy, dietary and physical activity behaviours, which affect BMI, have different socioeconomic patterns in different countries^{41–42}. Our study results indicated that Norwegian children showed the same pattern of socioeconomic inequalities in OW/OB trajectories as other high-income countries showing a higher proportion of childhood OW/OB among the lower socioeconomic groups^{43,44}, which is in accordance with the reversal hypothesis⁴⁵.

An early onset of socioeconomic inequalities in children's BMI was found in this study. Interventions against these inequalities targeted early in life are thus needed. Furthermore, body weight change is caused by an interaction of factors. Thus, this early onset of socioeconomic inequalities and widening with increasing age might be due to differences in exposures to factors influencing child weight development at different stages of development. In this regard, studies have documented socioeconomic differences in the factors influencing child weight development such as prenatal factors⁴⁶, breast-feeding¹², complementary feeding practices^{13,14}, childhood dietary behaviours^{15–18}, and sedentary behaviours¹⁹. However, the extent to which these factors contribute to the occurrence and continued widening of socioeconomic inequalities in children's weight development are not fully understood⁴⁷; such studies are thus warranted.

Investigating how socioeconomic inequalities in children's weight and height growth trajectories evolve with increasing age is important to understand the roots of the inequalities in BMI or OW/OB among children. Our findings demonstrated that both parental income and education related inequalities in children's weight trajectory emerged early in infancy and only parental education-related inequalities were evident after early infancy. The socioeconomic inequalities in the children's height growth trajectories were observed for parental income only. The SEP indicator specific results in the inequalities in children's weight and height trajectories might indicate that parental education-related differences in BMI among Norwegian children could be attributed to educational related differences in children's weight, rather than height. Meanwhile, income-related differences in children's BMI could be attributed to differences in children's height and weight up to the infancy stage and to differences in children's height afterward.

We found that children with low educated parents had higher weight gain velocity at most of the age points studied. Weight gain velocity is a measure of children's growth, which reflects weight gain over a given period^{48,49}. Studies have shown that children who gain weight rapidly during early life are at higher risk of obesity in later life⁵⁰ and had a higher likelihood of developing cardiovascular diseases in early adulthood^{51,52}. Thus, initiating interventions targeting inequalities in children's weight development and growth outcomes early in life could be a critical time to break the cycle for the risk of chronic disease inequalities in later life.

SEP indicator specific differences in the weight, height, BMI trajectories. Studies addressing socioeconomic inequalities in children's weight, height BMI, and OW/OB have used different SEP indicators interchangeably^{1,21,26,28}. In our study, we assessed the independent effects of maternal income, maternal educational level, paternal income and paternal educational level on children's height, weight, weight gain velocity, and BMI trajectories, with results indicating that there were SEP indicator-specific associations in children's weight, height and BMI trajectories among Norwegian children aged 1 month to 8 years. In general, differences between maternal and paternal SEP indicators were not very significant, in terms of both timing and magnitude, although some differences were observed. Our results showed that the effect estimates in the association between parental income and education with children's weight, weight gain velocity, and BMI were higher for the parental education related differences than for parental income related ones. This implies that parental educational status contributes more for the inequalities in children's weight and BMI trajectories than parental income status. Results from interaction analyses of parental education and income in their association with children's weight and BMI showed that despite similar income levels, those children with higher parental education had more favorable weight and BMI trajectories at some age points, showing the additional protective impact of education. Our finding supports by the finding by a study conducted in Germany highlighting the particular importance of parental education in its association with obesity over the other socioeconomic position indicators used⁵³. The protective effects of a higher parental education on favorable children's weight development might be because of the impact of education on parents' ability to process health information leading to improved health-related decisions in parenting practice. This might in turn affect their motivation to adopt a healthy lifestyle, and act as role models for their children^{27,54,55}. Thus, considering different parental SEP indicators in future studies exploring socioeconomic inequalities in child weight development is encouraged.

Strengths and limitations. The strengths of this study include the large sample size, the prospective assessments of weight, length/ height over a long follow-up period and the assessment of the independent effects of SEP indicators on trajectories of child weight, height and BMI. In addition, the missing anthropometric measurements were handled with the use of a growth model, an approach that can overcome the problem of loss to follow-up, which tend to be more pronounced among the less advantaged and less healthy population^{57–58}.

However, this study has weaknesses as well. The anthropometric measurements of the children were not based on direct measurements; they were based on parental reported measurements (although consultation of the children's health card was suggested for some age points), which might introduce measurement errors. The cohort includes only those who read Norwegian; as a result, ethnic differences in the existing socioeconomic inequalities could not be explored. Self-selection in MoBa is also a concern. Women participating in MoBa are older, better educated and include fewer smokers than the general population of pregnant women⁵⁹. Therefore, effect estimates for the socioeconomic differences in children's weight, height, and BMI in the current study are likely underestimated; the generally small magnitude of differences between groups should thus be seen in light of this potential underestimation.

Conclusions

Socioeconomic differences in children's weight, height and BMI trajectories emerge early in infancy and remain up to 8 years of age. The magnitude of these differences varied by indicator of socioeconomic position. Early interventions to combat these inequalities are thus needed to avoid or minimize their negative health consequences. To inform such interventions, identifying the underlying mechanisms behind the early occurrence and continuing widening of the inequalities in children's BMI with an increasing age is vital.

Data availability

The datasets analyzed during the current study are not publicly available due to data protection regulations. Researchers who want access to data sets for replication should submit an application to datatilgang@fhi.no. Access to data sets requires approval from The Regional Committee for Medical and Health Research Ethics in Norway and an agreement with MoBa.

Received: 22 August 2020; Accepted: 17 February 2021

Published online: 02 March 2021

References

1. Bann, D., Johnson, W., Li, L., Kuh, D. & Hardy, R. Socioeconomic inequalities in childhood and adolescent body-mass index, weight, and height from 1953 to 2015: An analysis of four longitudinal, observational, British birth cohort studies. *The Lancet Public Health* **3**, e194–e203 (2018).
2. Rasmussen, M. *et al.* Trends in social inequality in overweight and obesity among adolescents in Denmark 1998–2018. *Int. J. Public Health* **65**, 1–10 (2020).
3. Bouthoorn, S. H. *et al.* Development of socioeconomic inequalities in obesity among Dutch pre-school and school-aged children. *Obesity* **22**, 2230–2237 (2014).

4. Withrow, D. & Alter, D. A. The economic burden of obesity worldwide: A systematic review of the direct costs of obesity. *Obes. Rev.* **12**, 131–141 (2011).
5. Di Angelantonio, E. *et al.* Body-mass index and all-cause mortality: Individual-participant-data meta-analysis of 239 prospective studies in four continents. *The Lancet* **388**, 776–786 (2016).
6. Evensen, E., Wilsgaard, T., Furberg, A.-S. & Skeie, G. Tracking of overweight and obesity from early childhood to adolescence in a population-based cohort—The Tromsø Study, fit futures. *BMC Pediatr.* **16**, 64 (2016).
7. Tom, N., David, B., Rebecca, H. & William, J. Socioeconomic inequalities in childhood-to-adulthood BMI tracking in three British birth cohorts. *Int. J. Obes.* **44**, 388 (2020).
8. Power, C., Manor, O. & Matthews, S. Child to adult socioeconomic conditions and obesity in a national cohort. *Int. J. Obes.* **27**, 1081 (2003).
9. Power, C. *et al.* The contribution of childhood and adult socioeconomic position to adult obesity and smoking behaviour: An international comparison. *Int. J. Epidemiol.* **34**, 335–344 (2005).
10. Strand, B. H., Murray, E. T., Guralnik, J., Hardy, R. & Kuh, D. Childhood social class and adult adiposity and blood-pressure trajectories 36–53 years: Gender-specific results from a British birth cohort. *J. Epidemiol. Community Health* **66**, 512–518 (2012).
11. Bann, D., Johnson, W., Li, L., Kuh, D. & Hardy, R. Socioeconomic inequalities in body mass index across adulthood: coordinated analyses of individual participant data from three British birth cohort studies initiated in 1946, 1958 and 1970. *PLoS Med.* **14**, e1002214 (2017).
12. Heck, K. E., Braveman, P., Cubbin, C., Chavez, G. F. & Kiely, J. L. Socioeconomic status and breastfeeding initiation among California mothers. *Public Health Rep.* **121**, 51–59 (2006).
13. Dallazen, C. *et al.* Introduction of inappropriate complementary feeding in the first year of life and associated factors in children with low socioeconomic status. *Cadernos de Saude Publica* **34**, e00202816 (2018).
14. Rinaldi, A. E. M. & Conde, W. L. Socioeconomic inequality in dietary intake begins before 24 months in Brazilian children. *Rev. Saude Publica* **53**, 9 (2019).
15. Campbell, K. *et al.* Family food environments of 5–6 year-old-children: Does socioeconomic status make a difference?. *Asia Pac. J. Clin. Nutr.* **11**, 553–561 (2002).
16. Santos, L. P., Assunção, M. C. F., Matijasevich, A., Santos, I. S. & Barros, A. J. Dietary intake patterns of children aged 6 years and their association with socioeconomic and demographic characteristics, early feeding practices and body mass index. *BMC Public Health* **16**, 1055 (2016).
17. De Irala-Estevez, J. *et al.* A systematic review of socio-economic differences in food habits in Europe: Consumption of fruit and vegetables. *Eur. J. Clin. Nutr.* **54**, 706–714 (2000).
18. Wijtzen, A. I. *et al.* Social inequalities in young Children's meal skipping behaviors: The generation R study. *PLoS ONE* **10**, e0134487 (2015).
19. Pulsford, R. M., Griew, P., Page, A. S., Cooper, A. R. & Hillsdon, M. M. Socioeconomic position and childhood sedentary time: Evidence from the PEACH project. *Int. J. Behav. Nutr. Phys. Activity* **10**, 105 (2013).
20. Ballon, M. *et al.* Socioeconomic inequalities in weight, height and body mass index from birth to 5 years. *Int. J. Obes.* **42**, 1671–1679 (2018).
21. Howe, L. D. *et al.* Socioeconomic disparities in trajectories of adiposity across childhood. *Int. J. Pediatr. Obes.* **6**, e144–e153 (2011).
22. Jansen, P. W., Mensah, F. K., Nicholson, J. M. & Wake, M. Family and neighbourhood socioeconomic inequalities in childhood trajectories of BMI and overweight: Longitudinal study of Australian children. *PLoS ONE*. <https://doi.org/10.1371/annotation/f7e5e1f3-77f6-4c56-b0ba-53b54a86df14> (2013).
23. Langnase, K., Mast, M., Danielzik, S., Spethmann, C. & Müller, M. J. Socioeconomic gradients in body weight of German children reverse direction between the ages of 2 and 6 years. *J. Nutr.* **133**, 789–796 (2003).
24. Morgen, C. S. *et al.* Socioeconomic disparities in birth weight and body mass index during infancy through age 7 years: A study within the Danish National birth cohort. *BMJ Open* **7**, e011781 (2017).
25. Ruijsbroek, A. *et al.* The development of socio-economic health differences in childhood: Results of the Dutch longitudinal PIAMA birth cohort. *BMC Public Health* **11**, 225 (2011).
26. McCrory, C. *et al.* Maternal educational inequalities in measured body mass index trajectories in three European countries. *Paediatr. Perinat. Epidemiol.* **33**, 226–237 (2019).
27. Adler, N. E. & Newman, K. Socioeconomic disparities in health: Pathways and policies. *Health Aff.* **21**, 60–76 (2002).
28. Galobardes, B., Lynch, J. & Smith, G. D. Measuring socioeconomic position in health research. *Br. Med. Bull.* **81**, 21 (2007).
29. Flegal, K. M., Harlan, W. & Landis, J. Secular trends in body mass index and skinfold thickness with socioeconomic factors in young adult men. *Am. J. Clin. Nutr.* **48**, 544–551 (1988).
30. Flegal, K. M., Harlan, W. R. & Landis, J. R. Secular trends in body mass index and skinfold thickness with socioeconomic factors in young adult women. *Am. J. Clin. Nutr.* **48**, 535–543 (1988).
31. Monteiro, C. A., Conde, W. L. & Popkin, B. M. Independent effects of income and education on the risk of obesity in the Brazilian adult population. *J. Nutr.* **131**, 881S–886S (2001).
32. Liu, Y. *et al.* Interaction between parental education and household wealth on children's obesity risk. *Int. J. Environ. Res. Public Health* **15**, 1754 (2018).
33. Magnus, P. *et al.* Cohort profile update: The Norwegian mother and child cohort study (MoBa). *Int. J. Epidemiol.* **45**, 382–388 (2016).
34. Juliusson, P. *et al.* *Nasjonale faglige retningslinjer for veiing og måling i helsestasjons-og skolehelsetjenesten* (The Norwegian Directorate of Health, Oslo, 2010).
35. World Health Organization. *WHO child growth standards: Length/height-for-age, weight-for-age, weight-for-length, weight-for-height and body mass index-for-age: Methods and development* (WHO, Geneva, 2006).
36. Jenks, R. M. & Bayley, N. A mathematical method for studying the growth of a child. *Hum. Biol.* **9**, 556 (1937).
37. Comets, E., Lavenu, A. & Lavielle, M. SAEMIX: Stochastic Approximation Expectation Maximization (SAEM) Algorithm. *R package version 1* (2011).
38. Cole, T. J. & Lobstein, T. Extended international (IOTF) body mass index cut-offs for thinness, overweight and obesity. *Pediatr. Obes.* **7**, 284–294 (2012).
39. Team, R. C. R: A language and environment for statistical computing. R Foundation for Statistical Computing. Vienna, Austria <https://www.R-project.org> (2018).
40. Bosi, A. T. B., Eriksen, K. G., Sobko, T., Wijnhoven, T. M. & Breda, J. Breastfeeding practices and policies in WHO European region member states. *Public Health Nutr.* **19**, 753–764 (2016).
41. Fernandez-Alvira, J. M. *et al.* Country-specific dietary patterns and associations with socioeconomic status in European children: The IDEFICS study. *Eur. J. Clin. Nutr.* **68**, 811–821 (2014).
42. Boucher, J. & Konkle, A. Understanding inequalities of maternal smoking—Bridging the gap with adapted intervention strategies. *Int. J. Environ. Res. Public Health* **13**, 282 (2016).
43. Yang, Z. *et al.* Trends in overweight and obesity by socioeconomic status in Year 6 school children, Australian Capital Territory, 2006–2018. *BMC Public Health* **19**, 1512 (2019).
44. Chung, A. *et al.* Trends in child and adolescent obesity prevalence in economically advanced countries according to socioeconomic position: A systematic review. *Obes. Rev.* **17**, 276–295 (2016).

45. Pampel, F. C., Denney, J. T. & Krueger, P. M. Obesity, SES, and economic development: A test of the reversal hypothesis. *Soc. Sci. Med.* **74**, 1073–1081 (2012).
46. Cameron, A. J. *et al.* A review of the relationship between socioeconomic position and the early-life predictors of obesity. *Curr. Obes. Rep.* **4**, 350–362 (2015).
47. Gebremariam, M., Lien, N., Nianogo, R. & Arah, O. Mediators of socioeconomic differences in adiposity among youth: A systematic review. *Obes. Rev.* **18**, 880–898 (2017).
48. Senterre, T. & Rigo, J. Reduction in postnatal cumulative nutritional deficit and improvement of growth in extremely preterm infants. *Acta Paediatr.* **101**, e64–e70 (2012).
49. Olusanya, B. O. & Renner, J. K. Predictors of growth velocity in early infancy in a resource-poor setting. *Early Hum. Dev.* **87**, 647–652 (2011).
50. Monteiro, P. O. A. & Victora, C. G. Rapid growth in infancy and childhood and obesity in later life—A systematic review. *Obes. Rev.* **6**, 143–154 (2005).
51. Leunissen, R. W., Kerkhof, G. F., Stijnen, T. & Hokken-Koelega, A. Timing and tempo of first-year rapid growth in relation to cardiovascular and metabolic risk profile in early adulthood. *JAMA* **301**, 2234–2242 (2009).
52. Kerkhof, G. F., Willemsen, R. H., Leunissen, R. W., Breukhoven, P. E. & Hokken-Koelega, A. C. Health profile of young adults born preterm: Negative effects of rapid weight gain in early life. *J. Clin. Endocrinol. Metab.* **97**, 4498–4506 (2012).
53. Lamerz, A. *et al.* Social class, parental education, and obesity prevalence in a study of six-year-old children in Germany. *Int. J. Obes.* **29**, 373–380 (2005).
54. Wolfson, J. A., Gollust, S. E., Niederdeppe, J. & Barry, C. L. The role of parents in public views of strategies to address childhood obesity in the United States. *Milbank Q.* **93**, 73–111 (2015).
55. Cutler, D. M. & Lleras-Muney, A. *Education and Health: Evaluating Theories and Evidence. Report No. 0898-2937* (National Bureau of Economic Research, Cambridge, 2006).
56. Strandhagen, E. *et al.* Selection bias in a population survey with registry linkage: Potential effect on socioeconomic gradient in cardiovascular risk. *Eur. J. Epidemiol.* **25**, 163–172 (2010).
57. Goldberg, M. *et al.* Socioeconomic, demographic, occupational, and health factors associated with participation in a long-term epidemiologic survey: A prospective study of the French GAZEL cohort and its target population. *Am. J. Epidemiol.* **154**, 373–384 (2001).
58. Howe, L. D., Tilling, K., Galobardes, B. & Lawlor, D. A. Loss to follow-up in cohort studies: bias in estimates of socioeconomic inequalities. *Epidemiology (Cambridge)* **24**, 1 (2013).
59. Nilsen, R. M. *et al.* Self-selection and bias in a large prospective pregnancy cohort in Norway. *Paediatr. Perinat. Epidemiol.* **23**, 597–608 (2009).

Acknowledgements

The Norwegian Mother and Child Cohort Study is supported by the Norwegian Ministry of Health and Care Services and the Ministry of Education and Research, NIH/NINDS (Grant No. 1 UO1 NS 047537-01 and Grant No. 2 UO1 NS 047537-06A1). We are grateful to all the participating families in Norway who take part in this ongoing cohort study. This work was funded by the Norwegian Research Council BEDREHELSE program (Grant Number 273823). E.P. is funded by the Research Council of Norway, under the MILJØFORSK program (project number: 268465).

Author contributions

T.M. performed data preparation, statistical analyses, interpretation of the results, wrote the first draft of the manuscript, and had the main responsibility of writing the paper. M.K.G., N.L., E.P., A.-L.B. and O.A.A. conceived the study, participated in reviewing the drafts. All authors provided feedback on different versions of the manuscript and approved the final version submitted for publication.

Competing interests

The authors declare no competing interests.

Additional information

Supplementary Information The online version contains supplementary material available at <https://doi.org/10.1038/s41598-021-84615-w>.

Correspondence and requests for materials should be addressed to T.M.

Reprints and permissions information is available at www.nature.com/reprints.

Publisher's note Springer Nature remains neutral with regard to jurisdictional claims in published maps and institutional affiliations.



Open Access This article is licensed under a Creative Commons Attribution 4.0 International License, which permits use, sharing, adaptation, distribution and reproduction in any medium or format, as long as you give appropriate credit to the original author(s) and the source, provide a link to the Creative Commons licence, and indicate if changes were made. The images or other third party material in this article are included in the article's Creative Commons licence, unless indicated otherwise in a credit line to the material. If material is not included in the article's Creative Commons licence and your intended use is not permitted by statutory regulation or exceeds the permitted use, you will need to obtain permission directly from the copyright holder. To view a copy of this licence, visit <http://creativecommons.org/licenses/by/4.0/>.

© The Author(s) 2021