





Original Article

Familial co-aggregation of attention-deficit/hyperactivity disorder and autoimmune diseases: a cohort study based on Swedish population-wide registers

Tor-Arne Hegvik ^{1,2*}, Qi Chen,² Ralf Kuja-Halkola ²,
Kari Klungsøyr,^{3,4} Agnieszka Butwicka,^{2,5} Paul Lichtenstein,²
Catarina Almqvist,^{2,6} Stephen V Faraone,⁷ Jan Haavik^{1,8} and
Henrik Larsson^{2,9}

¹Department of Biomedicine, University of Bergen, Bergen, Norway, ²Department of Medical Epidemiology and Biostatistics, Karolinska Institutet, Stockholm, Sweden, ³Department of Global Public Health and Primary Care, University of Bergen, Bergen, Norway, ⁴Division of Mental and Physical Health, Norwegian Institute of Public Health, Bergen, Norway, ⁵Department of Child Psychiatry, Medical University of Warsaw, Warsaw, Poland, ⁶Pediatric Allergy and Pulmonology Unit at Astrid Lindgren Children's Hospital, Karolinska University Hospital, Stockholm, Sweden, ⁷Departments of Psychiatry and of Neuroscience and Physiology, SUNY Upstate Medical University, Syracuse, NY, USA, ⁸Division of Psychiatry, Haukeland University Hospital, Bergen, Norway and ⁹School of Medical Sciences, Örebro University, Örebro, Sweden

*Corresponding author. University of Bergen, Jonas Lies vei 91, Post Box 7804, 5020 Bergen, Norway. E-mail: Tor-Arne.Hegvik@uib.no

Received 20 July 2020; Accepted 9 July 2021; editorial decision 9 June 2021

Abstract

Background: Attention-deficit/hyperactivity disorder (ADHD) has been associated with several autoimmune diseases (AD), both within individuals and across relatives, implying common underlying genetic or environmental factors in line with studies indicating that immunological mechanisms are key to brain development. To further elucidate the relationship between ADHD and autoimmunity we performed a population-wide familial co-aggregation study.

Methods: We linked Swedish national registries, defined a birth cohort with their biological relatives and identified individuals diagnosed with ADHD and/or 13 ADs. The cohort included 5 178 225 individuals born between 1960 and 2010, of whom 118 927 (2.30%) had been diagnosed with ADHD. We then investigated the associations between ADHD and ADs within individuals and across relatives, with logistic regression and structural equation modelling.

Results: Within individuals, ADHD was associated with a diagnosis of any of the 13 investigated ADs (adjusted odds ratio (OR) = 1.34, 95% confidence interval (CI) = 1.30–1.38) as well as several specific ADs. Familial co-aggregation was observed. For example, ADHD

was associated with any of the 13 ADs in mothers (OR = 1.29, 95% CI = 1.26–1.32), fathers (OR = 1.14, 95% CI = 1.11–1.18), full siblings (OR = 1.19, 95% CI = 1.15–1.22), aunts (OR = 1.12, 95% CI = 1.10–1.15), uncles (OR = 1.07, 95% CI = 1.05–1.10) and cousins (OR = 1.04, 95% CI = 1.03–1.06). Still, the absolute risks of AD among those with ADHD were low. The genetic correlation between ADHD and a diagnosis of any of the investigated ADs was 0.13 (95% CI = 0.09–0.17) and the environmental correlation was 0.02 (95% CI = -0.03–0.06).

Conclusions: We found that ADHD and ADs co-aggregate among biological relatives, indicating that the relationship between ADHD and autoimmune diseases may in part be explained by shared genetic risk factors. The patterns of familial co-aggregation of ADHD and ADs do not readily support a role of maternal immune activation in the aetiology of ADHD. The findings have implications for aetiological models of ADHD. However, screening for autoimmunity among individuals with ADHD is not warranted.

Key words: Attention-deficit/hyperactivity disorder, neurodevelopmental disorder, autoimmunity, familial aggregation, familial co-aggregation, genetics, cohort study, national register, maternal immune activation

Key Messages

- Some studies show that individuals with attention-deficit/hyperactivity disorder (ADHD), and their biological relatives, have an increased risk of autoimmune disorders, though the aetiology underlying this increased risk remains unclear.
- Using Swedish population-wide registers it was found that individuals diagnosed with ADHD, and their biological relatives, had a moderately increased risk of autoimmune diseases.
- The noted associations between ADHD and autoimmune diseases may in part be explained by shared genetic risk factors.
- Due to the low absolute risks and limited benefit, screening for autoimmunity among individuals with ADHD is not warranted.

Introduction

Attention-deficit/hyperactivity disorder (ADHD) is a common, and often chronic, childhood-onset neurodevelopmental disorder with hyperactivity, inattention and impulsivity constituting the core symptoms.¹ Despite its strong familial aggregation (e.g. an individual has an over seven times increased risk of being diagnosed with ADHD if a full sibling has ADHD), a high heritability of about 70–80% and several recently identified genome-wide statistically significant genetic loci, the precise aetiology of ADHD remains elusive.^{1–5}

Several immunological mechanisms are central to brain development and functioning, e.g. the primary immune cells of the brain, glial cells, are key to synaptic pruning during neurodevelopment,⁶ and various immune signalling molecules, such as cytokines and complement factors, have been demonstrated to regulate and affect neurogenesis.^{7–9} Traits and disorders characterized by immune dysfunction could therefore be associated with neurocognitive and

behavioural traits and disorders, reflecting shared aetiology. In line with this, immune-mediated comorbidities of ADHD have in recent years received increased attention^{10,11} and common immune-mediated diseases such as asthma and eczema have repeatedly been linked to ADHD.^{12–15} Similarly, ADHD has been related to autoimmune diseases (ADs), with epidemiological studies reporting positive within-individual associations with several specific ADs, such as celiac disease, ulcerative colitis, psoriasis, ankylosing spondylitis and type 1 diabetes mellitus (T1DM), in addition to a general association with ADs as a group of diseases.^{12,16–19} Although such findings are intriguing, many have not been replicated in independent samples.^{10,11,17} Some studies also suggest that ADHD might co-aggregate with ADs within families.^{18,20,21} Such findings could suggest genetic sharing between ADHD and ADs, though none have investigated whether the familial clustering extends beyond first-degree relatives. Moreover, genetic studies have reported contrasting results. For

example, a study that used data from genome-wide association studies (GWAS) reported a negative genetic correlation between ADHD and T1DM.^{2,22} Consequently, alternative mechanisms must be considered. It could be that the environment shared between first degree relatives may have a role in the familial co-aggregation of ADHD and ADs; for example, socioeconomic status, pollution and exposure to infectious agents have all been associated with both ADHD and ADs.^{23–25} Moreover, in light of animal studies that have established gestational maternal inflammation as a potential cause of offspring neurodevelopmental disorders^{8,26} and the findings of stronger association between offspring ADHD and maternal ADs as compared with offspring ADHD and paternal ADs,^{18,20,21} AD-mediated maternal effects are conceivable.

To further advance knowledge on the relationship between ADHD and ADs, we conducted a population-based, within-individual-and familial, co-aggregation cohort study using Swedish population-wide national registers. If ADHD was found to be associated with ADs across relatives who are assumed to share little to no environment, such as cousins, this would be in support of common genetic factors. Moreover, if one saw stronger associations between ADHD and ADs across maternal relatives, as compared with paternal relatives, this could indicate a role of AD-mediated maternal effects.

Methods

The study was approved by the Regional Ethical Review Board in Stockholm, Sweden (reference number 2013/862–31/5). As the study is register-based, informed consent was waived.

Study population

The present cohort study was based on linked data from several Swedish population-based registers, using each

individual's unique national personal identification number for linkage.²⁷ With the Swedish Total Population Register we identified all 5 403 464 individuals born in Sweden between 1960 and 2010, and then restricted to the 5 388 383 individuals where the identity of the biological mother was known.²⁸ By using the Swedish Cause of Death Register and the Total Population Register,^{28,29} we excluded all 210 158 individuals who died or emigrated before age 10, leaving us with a cohort of 5 178 225 index individuals.

The Swedish Multi-Generation Register contains information on the biological parents of Swedish inhabitants born after 1931 and alive in Sweden after 1960.³⁰ With this register we deduced family relationships and constructed several index-relative cohorts: mothers, fathers, full siblings, aunts, uncles and cousins. To limit bias due to mortality in the parent generation, we restricted the index-relative cohorts with mothers, fathers, aunts and uncles to index individuals born in 1980 or later. We excluded 60 025 siblings, 18 798 aunts, 23 169 uncles and 93 797 cousins who died or emigrated before age 10 from all analyses. For the total cohort sizes and analytical samples see [Table 1](#). See [Figure 1](#) for a flowchart that describes the definition of the study population.

Ascertainment of ADHD and autoimmune diseases

The Swedish National Patient Register (NPR) was established in 1964 as a somatic inpatient care register.³¹ From 1973 it has included psychiatric inpatient care, and since 2001 somatic and psychiatric outpatient care. Diseases and disorders recorded in the NPR have been coded according to Swedish adaptations of the World Health Organization's International Classification of Disease (ICD); ICD-7 from 1964 to 1967, ICD-8 from 1968 to 1986, ICD-9 from 1987 to 1996 and ICD-10 from 1997.

Table 1 Number of index individuals, relatives and unique index-relative pairs in the investigated cohorts

Cohort	Number of unique index individuals	Number of unique relatives	Number of unique index-relative pairs	Estimated additive genetic factors shared
Within-individual ^a	5 178 225			
Index-mother ^b	3 069 739	1 586 303	3 069 739	50%
Index-father ^b	3 053 263	1 579 362	3 053 263	50%
Index-full sibling ^a	4 289 186	4 592 004	3 911 001	50%
Index-aunt ^b	2 171 224	1 406 855	4 202 774	25%
Index-uncle ^b	2 229 606	1 483 983	4 439 571	25%
Index-cousin ^a	4 014 267	4 276 679	13 869 192	12.5%

^aIndex individuals born 1960–2010.

^bIndex individuals born 1980–2010.

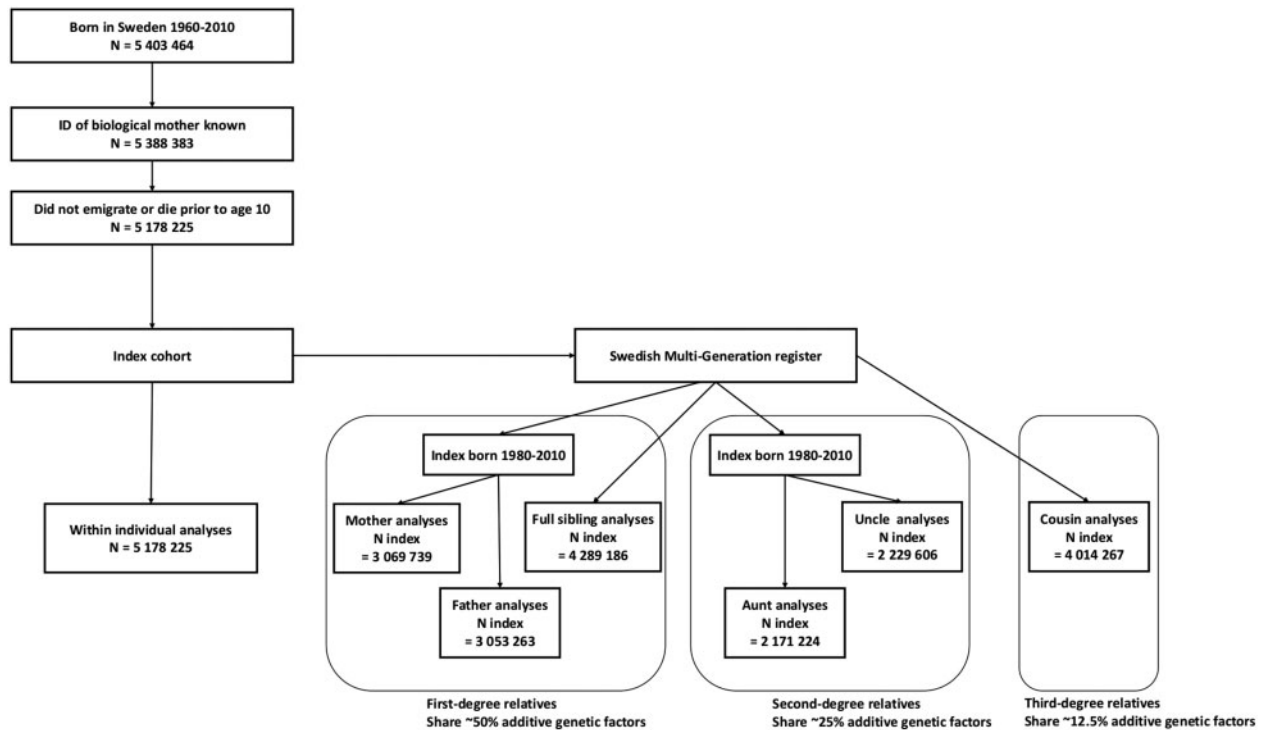


Figure 1. Flowchart illustrating how the study population was defined

The Swedish Prescribed Drug Register (PDR) was established July 2005 and holds information on all dispensed drug prescriptions in Sweden.³² Specific drugs are recorded with their Anatomical Therapeutic Chemical (ATC) code. Over-the-counter drugs are not recorded. We used information on dispensed drugs from July 2005 to December 2013.

We identified individuals ever diagnosed with ADHD and ADs of interest using NPR and PDR. We only included ADs with more than 2000 diagnosed individuals in the index cohort. Since ADs share genetic architecture, and one individual might have several ADs, we defined an ‘any of the 13 ADs’ variable (anyAD) that constituted our primary outcome; see [Supplementary Table S1](#) (available as [Supplementary data](#) at *IJE* online) for case definitions.

Data management and statistical analyses

We organized, managed and analysed the data with Statistical Analysis Software (SAS) 9.4 (SAS Institute Inc.) and R 3.4.3 (R Foundation) with built-in commands, and the *drgee*,³³ *stdReg*³⁴ and *OpenMx*³⁵ packages.

Associations between ADHD and ADs were calculated as odds ratios (OR) with logistic regression. In all analyses, lifetime ADHD defined predictor/exposure and the dependents/outcomes were defined as lifetime diagnosis of the respective ADs, with anyAD being the primary outcome and the specific ADs secondary outcomes. To adjust for familial clustering, we computed cluster-robust

standard errors; 95% confidence intervals (95% CI) were calculated *ad modum* Wald. We did not adjust for multiple testing, given that tests across different index-relatives relationships would not constitute independent tests.

Absolute estimates, such as absolute risk (AR) and risk difference (RD), may be more informative in clinical and public health settings than relative measures, such as ORs.³⁶ We therefore used logistic regression models and regression standardization approaches to calculate estimates of standardized ARs and RDs.³⁴ For the sake of brevity and comparability, we mainly present ORs.

Within-individual and familial co-aggregation analyses

We calculated the associations between ADHD and ADs within individuals with adjustment for sex and year of birth. Year of birth was modelled as natural cubic splines to minimize residual confounding and loss of statistical power.³⁷ We did not adjust for other covariates that are often adjusted for (e.g. maternal education, family income, parental psychiatric disorder, parental AD) as these are likely not true confounders of the association between ADHD and AD, but may rather represent either mediators between ADHD and ADs, or proxies of ADHD and/or AD risk or alternatively proxies for the associations we aim to measure.^{2,38} To assess sex effects we refitted the models

with the addition of an interaction term between ADHD and sex, and we performed the analyses stratified by sex.

In the familial co-aggregation analyses we investigated whether the relatives of individuals diagnosed with ADHD had an increased odds of ADs, as compared with the relatives of non-ADHD individuals. The analyses were adjusted for year of birth of both the index individuals and the relatives modelled as natural cubic splines. Other covariates were not adjusted for under the same rationales as in the within-individual analyses.

Differences in the ORs for the associations between index (offspring) ADHD and maternal AD as compared with index ADHD and paternal AD, could be due to maternal (including gestational) effects. To test whether the index-mother associations were different from the index-father associations, we conducted a Wald test: we merged the mother and father cohorts and conducted ‘parent analyses’ with the inclusion of an interaction term between parent type (mother or father), and ADHD (and all covariates). The resulting estimate for the interaction may thus reflect a maternal effect. As reference, we performed similar analyses for: ‘aunts versus uncles’ unconditioned by parental side, where we assumed no maternal effects; and ‘maternal aunts and uncles versus paternal aunts and uncles’, where we assumed that ADs on the maternal side would be associated with maternal autoimmunity, and thus indirectly with maternal effects on the offspring.

Sensitivity analyses

We conducted several sensitivity analyses to investigate whether the results in the main analyses could be due to the direct effects of ADHD on ADs, direct effects of ADs on ADHD, the psychiatric comorbidities of ADHD, off-label prescription of ADHD medication in the treatment of ADs, misdiagnosis (including psychosomatic disorders and other AD mimics), geographical factors, period effects related to the registers (including immortal time bias) and right-censoring; see [Supplementary information](#) (available as [Supplementary data](#) at *IJE* online) for rationales and methods descriptions.

Quantitative genetic modelling

To assess the relative contribution of genetic and environmental factors to the association between ADHD and anyAD, we performed structural equation modelling. We used full siblings, assumed to share 50% genetic variance and 100% shared environmental variance, and full cousins, assumed to share 12.5% genetic variance and 0% shared environmental variance. All included individuals were born 1960–2010 and did not die or emigrate before

age 10. From each family we randomly selected one pair of siblings or cousins, resulting in 1 663 093 sibling pairs and 107 800 cousin pairs. We decomposed ADHD and anyAD’s variance and covariance into additive genetic (A), non-shared environmental (C) and unique environmental (E) factors, using liability threshold models that again were used to fit bivariate models to calculate the correlation of A, C and E across ADHD and anyAD. The analyses were adjusted for year of birth (modelled as a linear and cubic covariate) and sex. The presented results are from the best-fitting and most parsimonious model (lowest Akaike information criteria).

Results

Descriptive statistics

Of the 5 178 225 individuals (2 518 377 female, 2 659 848 male) in the final birth cohort, 118 927 (2.3%) were defined as having ADHD. Descriptive information on the composition of the cohorts is presented in [Table 1](#) and information on the prevalences, age distribution and sex distributions of the disorders and diseases of interest is presented in [Table 2](#) and [Supplementary Figure S1](#) (available as [Supplementary data](#) at *IJE* online).

Within-individual and familial co-aggregation analyses

ADHD was associated with anyAD (OR = 1.34, 95% CI = 1.30–1.38) and several specific ADs with ORs ranging between 1.11 (95% CI = 1.02–1.20) for ulcerative colitis and 1.79 (95% CI = 1.38–2.31) for Sjögren’s syndrome; see [Figure 2](#) and [Supplementary Figure S2](#) (available as [Supplementary data](#) at *IJE* online) for within-individual and familial co-aggregation analyses presented as ORs.

Minor sex differences were noted for ADHD’s association with psoriasis and Hashimoto’s disease; see [Supplementary Table S3](#) (available as [Supplementary data](#) at *IJE* online) for sex-specific within-individual results.

In the familial co-aggregation analyses, ADHD was associated with an increased odds of anyAD in all relatives: mothers (OR = 1.29, 95% CI = 1.26–1.32), fathers (OR = 1.14, 95% CI = 1.11–1.18), full siblings (OR = 1.19, 95% CI = 1.15–1.22), aunts (OR = 1.12, 95% CI = 1.10–1.15), uncles (OR = 1.07, 95% CI = 1.05–1.10) and cousins (OR = 1.04, 95% CI = 1.03–1.06). Moreover, ADHD was associated with all specific ADs in at least one of the first-degree relatives (father, mother, full sibling), including all first-degree relatives for Crohn’s disease, psoriasis and rheumatoid arthritis. ADHD was also associated with an increased odds of several specific ADs in aunts, uncles and

Table 2. Number and sex distribution per disorder/disease in the index cohort (born 1960–2010)

Disorder/disease	N index cohort (prevalence: N per 10 000)	Female %	N individuals with both ADHD and autoimmune disease
Total	5 178 225	48.6	
ADHD	118 927 (230)	36.0	
Any of the autoimmune diseases	214 596 (414)	56.3	5577
Ankylosing spondylitis	7196 (14)	40.4	138
Celiac disease	37 872 (73)	63.0	1417
Crohn's disease	21 971 (42)	51.5	548
Grave's disease	14 111 (27)	83.7	265
Hashimoto's disease	7548 (15)	84.8	248
Multiple sclerosis ^a	8900 (17)	70.5	88
Psoriasis	45 954 (89)	49.8	1270
Rheumatoid arthritis	15 090 (29)	74.0	255
Sarcoidosis	6960 (13)	37.2	113
Sjögren's syndrome	2858 (6)	88.6	61
Systemic lupus erythematosus	3452 (7)	87.2	51
Type 1 diabetes mellitus	34 653 (67)	42.9	1081
Ulcerative colitis	30 414 (58)	48.1	606

^aSlightly smaller total sample size of 5 160 610 due to case definition.

Abbreviations: ADHD attention-deficit/hyperactivity disorder.

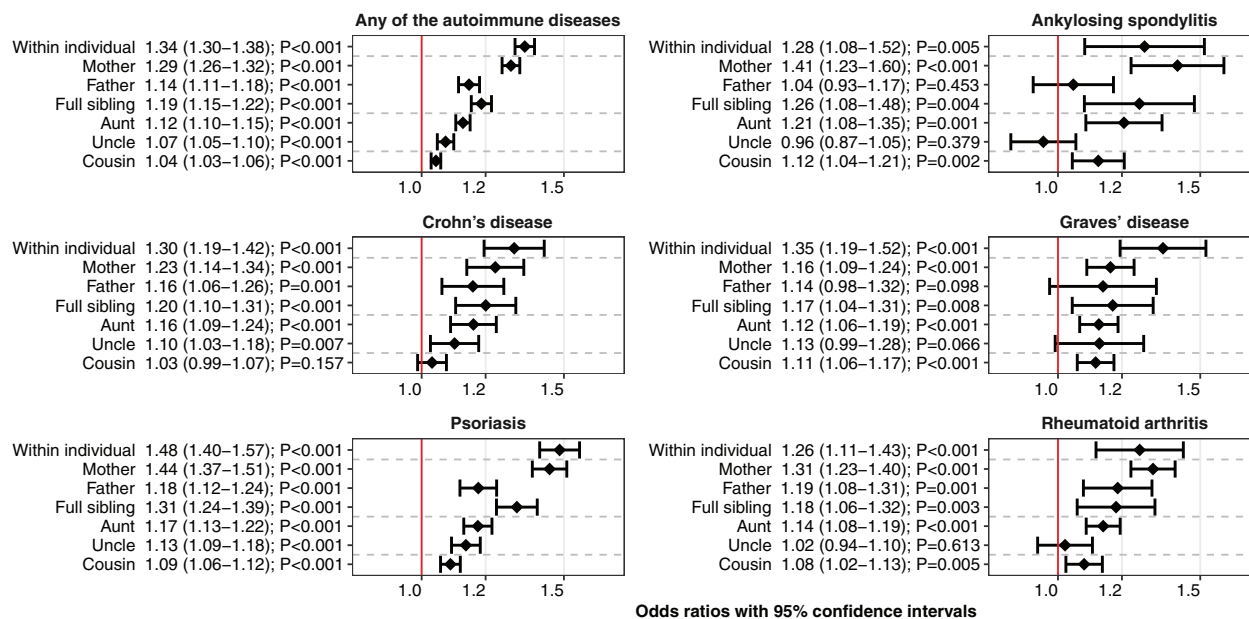


Figure 2. The associations between index individuals' attention-deficit/hyperactivity disorder (ADHD) and index individuals' or relatives' any of the autoimmune diseases (anyAD) and five specific autoimmune diseases, as odds ratios with 95% confidence intervals and *P*-values (adjusted for year of birth of index and relative if applicable). The x-axes are log-transformed

cousins; see [Figure 2](#) and [Supplementary Figure S2](#) (available as [Supplementary data](#) at *IJE* online) for the results of the within-individual and family co-aggregation analyses presented as ORs.

Among individuals diagnosed with ADHD, and their relatives, the standardized ARs for ADs were modestly elevated ([Supplementary Figure S3](#), available as [Supplementary data](#) at *IJE* online).

Index ADHD had stronger association with maternal anyAD as compared with paternal anyAD (ratio of odds ratios (ROR)=1.13, 95% CI=1.09–1.17). ADHD had stronger association with aunt anyAD, as compared with uncle anyAD (ROR=1.05, 95% CI=1.02–1.08). There was no signal for a stronger or weaker association between ADHD and maternal aunt and uncle anyAD as compared with paternal aunt and uncle anyAD (ROR=0.99, 95%

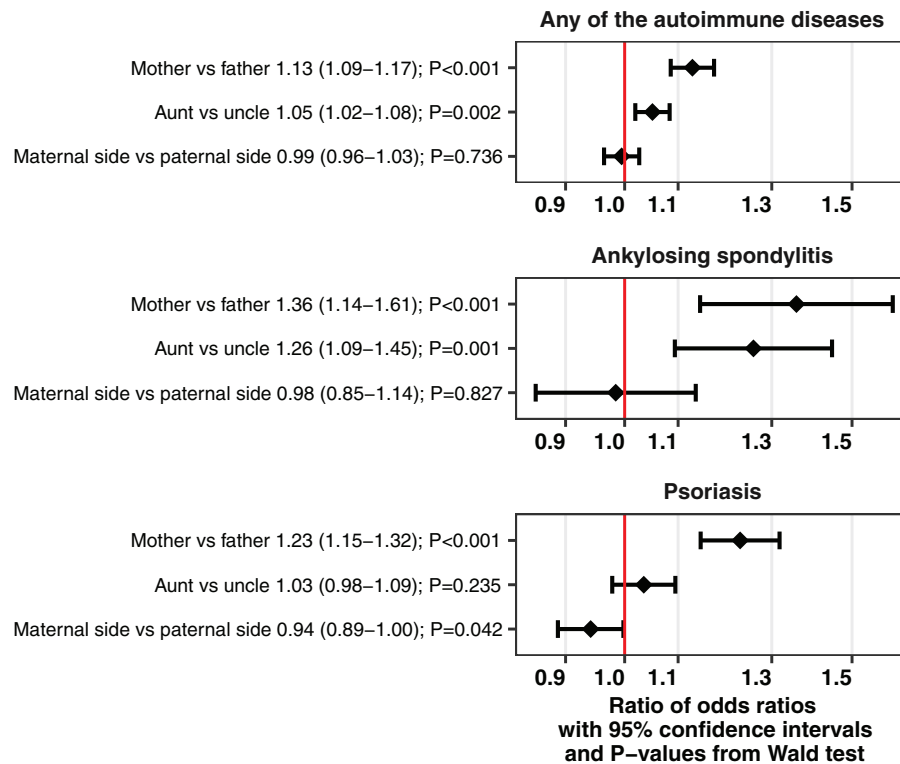


Figure 3 The interaction by parent type on the association between index attention-deficit/hyperactivity disorder (ADHD) and parental any of the autoimmune diseases (anyAD) and two specific autoimmune diseases, as exponentiated coefficients with 95% confidence intervals and *P*-values (adjusted for year of birth of index and relative). The exponentiated coefficient represents the ratio of the two odds ratios (OR), e.g. $OR_{\text{index-mother}}$ and $OR_{\text{index-father}}$ in the analyses of ‘mother vs father’. If the ratio is >1 , it indicates that $OR_{\text{index-mother}}$ is higher than $OR_{\text{index-father}}$; similarly for ‘aunt vs uncle’, and ‘maternal aunt and uncle vs paternal aunt and uncle’ (maternal side vs paternal side). The x-axes are log-transformed

CI = 0.96–1.03). Statistical power was limited in the analyses of the specific ADs; see [Figure 3](#) and [Supplementary Figure S4](#) (available as [Supplementary data](#) at *IJE* online).

Sensitivity analyses

After exclusion of index individuals who had ever received a diagnosis of a non-ADHD psychiatric disorder, the within-individual and index-relative ADHD-AD associations were attenuated and the 95% CIs were widened; see [Supplementary information](#) and [Supplementary Figure S6](#) (available as [Supplementary data](#) at *IJE* online).

The results of the other sensitivity analyses were not in contrast to the main analyses; see [Supplementary information](#) (available as [Supplementary data](#) at *IJE* online).

Quantitative genetic modelling

The best-fitting and most parsimonious model was a model that described ADHD with AE, and anyAD with ACE. As shown in [Table 3](#), the heritability was estimated to 0.84 (95% CI = 0.83–0.86) for ADHD and 0.23 (95% = 0.15–0.32) for anyAD. The shared environmental component of anyAD was 0.09 (95% CI = 0.05–0.13). The genetic

correlation of ADHD and anyAD was 0.13 (95% CI = 0.09–0.17), whereas the unique environmental correlation was almost zero at 0.02 (95% CI = -0.03–0.06). Genetic correlation explained most, in not all, the covariance between ADHD and anyAD, 0.92 (95% CI = 0.68–1.17).

Discussion

Our comprehensive population-based multigenerational family study found ADHD to be associated with several ADs, both within individuals and across biological relatives. ADHD was to some degree more strongly associated with maternal than paternal ADs, but by using aunts and uncles in a genetically informative study design, we demonstrate that this difference cannot be readily explained by AD-mediated maternal effects. Quantitative genetic modelling further indicates that the familial co-aggregation of ADHD and ADs is partly due to shared genetic factors.

In light of our results, shared genetic liabilities between ADHD and ADs seem plausible. As the heritability of ADHD is 70–80% and the role of shared environmental factors in ADHD’s aetiology has been demonstrated to be limited,^{3,4} environmental effects confounding the estimates

Table 3. Results of quantitative genetic modelling. Estimates (95% confidence intervals) of genetic and environmental contribution to ADHD and a diagnosis of any of the investigated autoimmune diseases, and their correlations based on a model without C in ADHD (the model found most well-fitting and parsimonious)

	A	C	E
Explained variance			
ADHD	0.84 (0.83–0.86)	NA	0.16 (0.15–0.18)
Any of the autoimmune diseases	0.23 (0.15–0.32)	0.09 (0.05–0.13)	0.68 (0.64–0.72)
Correlation			
ADHD and any of the autoimmune diseases	0.13 (0.09–0.17)	NA	0.02 (–0.03–0.06)
Explained correlation			
ADHD and any of the autoimmune diseases	0.92 (0.68–1.17)	NA	0.08 (–0.16–0.32)

As the shared environment component of ADHD has been set to 0 in the model specification, there is no shared environment correlation or proportion of covariance to calculate.

A, additive genetic; C, shared environment; E, unique environment; NA, not applicable.

profoundly seem improbable. Important residual environmental confounding is made further unlikely with the moderately high ORs in the primary analyses.³⁹ In addition, biological aunts, uncles and cousins must be assumed to share little environment with the index individuals, in further support of shared genetic factors underlying the familial co-aggregation. Moreover, both epidemiological and molecular genetics studies have demonstrated positive genetic correlations between ADHD and ADs, in agreement with our findings.^{2,13,22} Nonetheless, we cannot rule out a role of environment and its interplay with genetic factors in explaining the observed pattern of familial co-aggregation, as genetically closer individuals tend to share more environmental factors as well. The sensitivity analyses where we adjusted for the relatives' ADHD and the index individuals' anyAD with little changes to the ORs, in addition to the finding of little to no individually unique environmental correlation between ADHD and anyAD in the quantitative genetic modelling, indicate that any shared aetiological factors do not operate primarily through ADHD-related behaviours or liability to ADs (e.g. early life immune dysfunction).^{40–46}

However, the sensitivity analyses where we adjusted for ADHD in the relatives would not adjust for all ADHD liability/symptoms in the study population, and we cannot rule out that behaviours secondary to ADHD symptoms, e.g. smoking, again increase the risk of AD, and as such partly explain the noted familial co-aggregations. This is an area where more research is needed. It could also be that pronounced ADHD symptoms of an individual might lead to more familial stress that, in turn, increases the risk of ADs among the closest relatives, especially in mothers who are the primary caregivers. Still, it seems unlikely that this could explain all of the familial co-aggregation between ADHD and ADs, as we note familial co-aggregation in relatives as

distant as full cousins. Several neuropsychiatric disorders have been associated with both ADHD⁴ and ADs,^{46,47} and thus our findings could be due to a common aetiological factor of neuropsychiatric disorders and ADs, and not represent patterns unique to ADHD. However, this is explored in the sensitivity analysis, where the remaining signs of familial co-aggregation between ADHD and ADs after the removal of all index individuals diagnosed with a non-ADHD psychiatric disorder, suggest the presence of an ADHD-specific factor (see [Supplementary information](#), available as [Supplementary data](#) at *IJE* online). Of note, a large number of individuals were excluded from these analyses; for example, from the index cohort 70.5% of those diagnosed with ADHD were removed, with consequential bias and reduced statistical power.

The association between ADHD and maternal anyAD was stronger than the association between ADHD and paternal anyAD (and similar findings were noted for four specific ADs). Therefore, one could argue that our results support a role for AD-mediated maternal effects in the aetiology of offspring ADHD, in line with experimental studies in rodents and non-human primates that suggest that gestational maternal immune activation (MIA) may cause *in utero* neurodevelopmental disturbances in the offspring.²⁶ Still, caution must be exercised in the interpretation of our findings in favour of maternal effects, including MIA. It could be that the stronger association between ADHD and maternal AD, relative to the association between ADHD and paternal AD, are due to unknown biases and/or sex effects, as well as complex genetic effects. In support of sex-dependent factors and/or biases, the association between ADHD and aunt anyAD was elevated as compared with the association between ADHD and uncle anyAD (and two specific ADs), and because this analysis

was not conditioned on parental side, we suspect unknown sex effects/biases to underlie the stronger association between ADHD and aunt anyAD. Furthermore, if maternal ADs have a causal role in offspring ADHD, the maternal relatives of those with ADHD should have more ADs than the paternal relatives, as the ADs themselves have high heritabilities.^{13,40,48} Yet, in the analyses where we compared the association between ADHD and maternal aunt and uncle anyAD with the association between ADHD and paternal aunt and uncle anyAD, we did not find stronger association with the maternal side relatives' anyAD. Nonetheless, our findings do not exclude the possibility of AD-mediated maternal (including *in utero*) effects to have a role in ADHD, but merely demonstrate that other factors should be taken into consideration before attributing maternal-paternal discrepancies in ORs, hazard ratios or risk ratios to maternal AD-mediated environment. In further opposition to a causal role of MIA in ADHD, a sibling-controlled study could not find maternal infections during pregnancy to be associated with offspring ADHD.⁴⁹ However, similar sibling-controlled studies on AD-mediated maternal effects and ADHD are likely unsuited (including with the data available to us), as date of AD diagnosis is not a good proxy for time of AD debut, as ADs may have long prodromal phases^{50,51} in addition to which diagnostic delays are common.^{52,53} Future studies that seek to illuminate whether ADs are causal maternal risk factors for offspring ADHD and other psychiatric disorders, should use study designs that can better handle familial liability, such as those based on assisted reproduction technology.⁵⁴

Despite the fact that both the within-individual and the index-relative ADHD-AD associations were not miniscule on the OR scale, they were still substantially smaller than what is typically reported between ADHD and other neuropsychiatric disorders.^{4,5,55} Therefore, with the low prevalences of ADs in the general population, the ARs remained small. For example, individuals with ADHD had an approximately 40% increased risk of developing celiac disease and the calculated AR of having celiac disease in our birth cohort was 1.0% among individuals with ADHD compared with 0.7% among those without ADHD, equivalent to an RD of 0.3% points. Based on our findings, with the low ARs and RDs and limited expected benefit, screening for ADs in asymptomatic individuals diagnosed with ADHD (or *vice versa*) and their relatives is not warranted.

Some of this study's findings are replications of previous findings in independent materials.^{12,17,18,20} Still, the magnitude of the associations differs between the studies, and some previous findings were not replicated. Such variation could be due to unique characteristics of the different study populations (e.g. data sources, age, ethnicity, culture) and modelling techniques (e.g. which covariates to adjust for

and how). Moreover, recent Swedish studies with similar research aims have used many of the same registries as in our study but have focused exclusively on the associations between ADHD and first-degree relatives' AD,²¹ or only within individuals and siblings.^{16,19} We extend on these previous studies by presenting estimates for both within-individual associations and familial associations for first-, second- and third-degree relatives for many ADs, and we provide new insights as to why associations between ADHD and maternal ADs may be stronger than associations between ADHD and paternal ADs, and we present methodology that can be employed by researchers with similar data who wish to pursue similar questions. Furthermore, we present estimates of ARs and RDs that are of clinical interest, and we demonstrate extensive sensitivity analyses that indicate our findings cannot be easily explained away by such as bias or misdiagnosis. In addition, we performed quantitative genetic modelling on the familial co-aggregation between ADHD and anyAD.

Studies employing alternative study designs, e.g. insurance data and molecular genetics, have reported findings that are in direct contrast to our study.^{2,13,22} Nevertheless, such studies could be hampered by several methodological issues that may cause misleading estimates, e.g. collider bias, that is bias due to conditioning on a common outcome.⁵⁶ Individuals with chronic health conditions, such as ADHD and ADs, may be prevented from obtaining private health insurance, and thus such data may be inherently conditioned towards individuals with a lower burden of chronic diseases, which could cause collider bias leading to negative associations/correlations between ADHD and ADs.¹³ Likewise in the ADHD GWAS, somatic comorbidity was an exclusion criterion in at least one of the sub-samples.² Such criteria might introduce collider bias in studies that use summary statistics from GWASs, for example polygenic scores and whole-genome genetic correlations.^{2,22} As we used population-wide registers from a publicly funded health care system, many potential sources of bias should be minimized.

To avoid bias we excluded individuals who died or emigrated before age 10, as ADs seldom debut earlier than this age and those that do are often followed up in specialist health care and are thus recorded in the registers. Setting the cut-off age higher could lead to bias since ADHD is associated with increased mortality.⁵⁷ As a definition of ADHD similar to ours is highly correlated with ADHD symptoms, our ADHD definition can be considered validated⁵⁵ and many of the ADs have been validated.^{31,58-61} Moreover, we used information on prescribed medication to improve the positive predictive values of some of the AD definitions where possible. The limitation to ADs with more than 2000 cases in the birth cohort should also provide some protection from incorrectly recorded diagnoses

and spurious associations.^{31,62} Sensitivity analyses with more restrictive AD definitions yielded, with few exceptions, results almost identical to the main analyses. Therefore, erroneous and tentative diagnoses probably had a limited impact on the observed findings. Moreover, the sensitivity analyses investigating geographical factors, period effects and right-censoring did not uncover worrying results, indicating that these factors did not introduce substantial bias to our study.

To conclude, we demonstrate within-individual and familial co-aggregation of ADHD and several ADs, likely reflecting shared genetic factors. Moreover, we demonstrate contrasting findings of AD-mediated maternal effects, including MIA, having a causal role in the development of offspring ADHD. Our results have implications for the understanding of ADHD's aetiology, but do not warrant screening for ADs among asymptomatic individuals with ADHD.

The population-wide individual-specific register data underlying this article were provided by Socialstyrelsen and may not be shared with outside researchers. Data may be obtained after application to Socialstyrelsen [<https://www.socialstyrelsen.se/en/>].

Supplementary Data

Supplementary data are available at *IJE* online.

Funding

This study has received funding from: Stiftelsen Kristian Gerhard Jebsen (K.K., J.H.); the University of Bergen (T.A.H., K.K., J.H.); the Western Norway Regional Health Authorities (J.H.); the Swedish Research Council Starting Grant (A.B., grant number 2017-00788); Fredrik och Ingrid Thuring's Stiftelse (A.B., grant number 2016-00254); the Swedish Initiative for Research on Microdata in the Social and Medical Sciences (SIMSAM) framework (C.A., H.L., grant number 340-2013-5867); the Strategic Research Programme in Neuroscience (StratNeuro) of Karolinska Institutet (A.B.); the Swedish Research Council (H.L., grant number 2014-3831); the Swedish Brain Foundation (H.L., grant number FO2018-0273); and the European Union's Horizon 2020 research and innovation programme [K.K., S.V.F., J.H., H.L., grant agreement number 667302 (CoCA)]. None of the funding sources had any involvement in any parts of this study.

Conflict of Interests

J.H. has served as a speaker for Eli-Lilly, Shire, HB Pharma, Medice and Biocodex. H.L. has served as a speaker for Eli-Lilly and Shire and has received research grants from Shire, all outside the submitted work. None of the other authors have any conflicts of interests to declare.

References

1. Faraone SV, Asherson P, Banaschewski T *et al.* Attention-deficit/hyperactivity disorder. *Nat Rev Dis Primers* 2015;1:15020.
2. Demontis D, Walters RK, Martin J *et al.*; 23andMe Research Team. Discovery of the first genome-wide significant risk loci for attention deficit/hyperactivity disorder. *Nat Genet* 2019;51:63-75.
3. Chen Q, Brikell I, Lichtenstein P *et al.* Familial aggregation of attention-deficit/hyperactivity disorder. *J Child Psychol Psychiatry* 2017;58:231-39.
4. Faraone SV, Larsson H. Genetics of attention deficit hyperactivity disorder. *Mol Psychiatry* 2019;24:562-75.
5. Jokiranta-Olkonieni E, Cheslack-Postava K, Joelsson P, Suominen A, Brown AS, Sourander A. Attention-deficit/hyperactivity disorder and risk for psychiatric and neurodevelopmental disorders in siblings. *Psychol Med* 2019;49:84-91.
6. Neniskyte U, Gross CT. Errant gardeners: glial-cell-dependent synaptic pruning and neurodevelopmental disorders. *Nat Rev Neurosci* 2017;18:658-70.
7. Borsini A, Zunszain PA, Thuret S, Pariante CM. The role of inflammatory cytokines as key modulators of neurogenesis. *Trends Neurosci* 2015;38:145-57.
8. Zengeler KE, Lukens JR. Innate immunity at the crossroads of healthy brain maturation and neurodevelopmental disorders. *Nat Rev Immunol* 2021;21:454-68.
9. Yilmaz M, Yalcin E, Presumey J *et al.* Overexpression of schizophrenia susceptibility factor human complement C4A promotes excessive synaptic loss and behavioral changes in mice. *Nat Neurosci* 2021;24:214-24.
10. Mitchell RH, Goldstein BI. Inflammation in children and adolescents with neuropsychiatric disorders: a systematic review. *J Am Acad Child Adolesc Psychiatry* 2014;53:274-96.
11. Anand D, Colpo GD, Zeni G, Zeni CP, Teixeira AL. Attention-deficit/hyperactivity disorder and inflammation: what does current knowledge tell us? A systematic review. *Front Psychiatry* 2017;8:228.
12. Chen MH, Su TP, Chen YS *et al.* Comorbidity of allergic and autoimmune diseases among patients with ADHD. *J Atten Disord* 2017;21:219-27.
13. Wang K, Gaitsch H, Poon H, Cox NJ, Rzhetsky A. Classification of common human diseases derived from shared genetic and environmental determinants. *Nat Genet* 2017;49:1319-25.
14. Muskens JB, Velders FP, Staal WG. Medical comorbidities in children and adolescents with autism spectrum disorders and attention deficit hyperactivity disorders: a systematic review. *Eur Child Adolesc Psychiatry* 2017;26:1093-103.
15. Cortese S, Sun S, Zhang J *et al.* Association between attention deficit hyperactivity disorder and asthma: a systematic review and meta-analysis and a Swedish population-based study. *Lancet Psychiatry* 2018;5:717-26.
16. Butwicka A, Lichtenstein P, Frisen L, Almqvist C, Larsson H, Ludvigsson JF. Celiac disease is associated with childhood psychiatric disorders: a population-based study. *J Pediatr* 2017;184:87-93.e1.
17. Hegvik TA, Instanes JT, Haavik J, Klungsoyr K, Engeland A. Associations between attention-deficit/hyperactivity disorder and autoimmune diseases are modified by sex: a population-based cross-sectional study. *Eur Child Adolesc Psychiatry* 2018;27:663-75.

18. Nielsen PR, Benros ME, Dalsgaard S. Associations between autoimmune diseases and attention-deficit/hyperactivity disorder: a nationwide study. *J Am Acad Child Adolesc Psychiatry* 2017;56:234–40.e1.
19. Butwicka A, Frisen L, Almqvist C, Zethelius B, Lichtenstein P. Risks of psychiatric disorders and suicide attempts in children and adolescents with type 1 diabetes: a population-based cohort study. *Diabetes Care* 2015;38:453–59.
20. Instanes JT, Halmøy A, Engeland A, Haavik J, Furu K, Klungsoyr K. Attention-deficit/hyperactivity disorder in offspring of mothers with inflammatory and immune system diseases. *Biol Psychiatry* 2017;81:452–59.
21. Li X, Sjøstedt C, Sundquist J, Zoller B, Sundquist K. Familial association of attention-deficit hyperactivity disorder with autoimmune diseases in the population of Sweden. *Psychiatr Genet* 2019;29:37–43.
22. Tylee DS, Sun J, Hess JL *et al.*; Obsessive Compulsive and Tourette Syndrome Working Group of the Psychiatric Genomics Consortium. Genetic correlations among psychiatric and immune-related phenotypes based on genome-wide association data. *Am J Med Genet B Neuropsychiatr Genet* 2018;177:641–57.
23. Parks CG, Miller FW, Pollard KM *et al.* Expert panel workshop consensus statement on the role of the environment in the development of autoimmune disease. *Int J Mol Sci* 2014;15:14269–97.
24. Torvik FA, Eilertsen EM, McAdams TA *et al.* Mechanisms linking parental educational attainment with child ADHD, depression, and academic problems: a study of extended families in The Norwegian Mother, Father and Child Cohort Study. *J Child Psychol Psychiatry* 2020;61:1009–18.
25. Kohler-Forsberg O, Petersen L, Gasse C *et al.* A nationwide study in Denmark of the association between treated infections and the subsequent risk of treated mental disorders in children and adolescents. *JAMA Psychiatry* 2019;76:271–79.
26. Estes ML, McAllister AK. Maternal immune activation: implications for neuropsychiatric disorders. *Science* 2016;353:772–77.
27. Ludvigsson JF, Otterblad-Olausson P, Pettersson BU, Ekblom A. The Swedish personal identity number: possibilities and pitfalls in healthcare and medical research. *Eur J Epidemiol* 2009;24:659–67.
28. Ludvigsson JF, Almqvist C, Bonamy AK *et al.* Registers of the Swedish total population and their use in medical research. *Eur J Epidemiol* 2016;31:125–36.
29. Brooke HL, Talback M, Hornblad J *et al.* The Swedish cause of death register. *Eur J Epidemiol* 2017;32:765–73.
30. Ekblom A. The Swedish multi-generation register. *Methods Mol Biol* 2011;675:215–20.
31. Ludvigsson JF, Andersson E, Ekblom A *et al.* External review and validation of the Swedish national inpatient register. *BMC Public Health* 2011;11:450.
32. Wettermark B, Hammar N, Fored CM *et al.* The new Swedish Prescribed Drug Register - opportunities for pharmacoepidemiological research and experience from the first six months. *Pharmacoepidemiol Drug Saf* 2007;16:726–35.
33. Zetterqvist J, Sjölander A. Doubly robust estimation with the R package drgee. *Epidemiologic Methods* 2015;4:doi:10.1515/em-2014-0021.
34. Sjölander A. Regression standardization with the R package stdReg. *Eur J Epidemiol* 2016;31:563–74.
35. Neale MC, Hunter MD, Pritikin JN *et al.* OpenMx 2.0: extended structural equation and statistical modeling. *Psychometrika* 2016;81:535–49.
36. Spiegelman D, Khudyakov P, Wang M, Vanderweele TJ. Evaluating public health interventions: 7. Let the subject matter choose the effect measure: ratio, difference, or something else entirely. *Am J Public Health* 2018;108:73–76.
37. Harrell JFE. Regression modeling strategies: with applications to linear models, logistic and ordinal regression, and survival analysis. In: *Relaxing Linearity Assumption for Continuous Predictors*. 2nd edn. Heidelberg, Germany: Springer International Publishing, Springer, 2015.
38. Rothman KJ. *Epidemiology: An Introduction*. 2nd edn. Oxford, UK: Oxford University Press, 2012.
39. VanderWeele TJ, Ding P. Sensitivity analysis in observational research: introducing the E-Value. *Ann Intern Med* 2017;167:268–74.
40. Ananthakrishnan AN. Epidemiology and risk factors for IBD. *Nat Rev Gastroenterol Hepatol* 2015;12:205–17.
41. Versini M, Jeandel PY, Rosenthal E, Shoenfeld Y. Obesity in autoimmune diseases: not a passive bystander. *Autoimmun Rev* 2014;13:981–1000.
42. Perricone C, Versini M, Ben-Ami D *et al.* Smoke and autoimmunity: the fire behind the disease. *Autoimmun Rev* 2016;15:354–74.
43. van Amsterdam J, van der Velde B, Schulte M, van den Brink W. Causal factors of increased smoking in ADHD: a systematic review. *Subst Use Misuse* 2018;53:432–45.
44. Charach A, Yeung E, Climans T, Lillie E. Childhood attention-deficit/hyperactivity disorder and future substance use disorders: comparative meta-analyses. *J Am Acad Child Adolesc Psychiatry* 2011;50:9–21.
45. Kubsova A, Tejkalova H, Syslova K *et al.* Biochemical, histopathological and morphological profiling of a rat model of early immune stimulation: relation to psychopathology. *PLoS One* 2015;10:e0115439.
46. Benros ME, Eaton WW, Mortensen PB. The epidemiologic evidence linking autoimmune diseases and psychosis. *Biol Psychiatry* 2014;75:300–06.
47. Rom AL, Wu CS, Olsen J, Jawaheer D, Hetland ML, Mørch LS. Parental rheumatoid arthritis and autism spectrum disorders in offspring: a Danish nationwide cohort study. *J Am Acad Child Adolesc Psychiatry* 2018;57:28–32.e1.
48. Frisell T, Hellgren K, Alfredsson L, Raychaudhuri S, Klareskog L, Askling J. Familial aggregation of arthritis-related diseases in seropositive and seronegative rheumatoid arthritis: a register-based case-control study in Sweden. *Ann Rheum Dis* 2016;75:183–89.
49. Ginsberg Y, D'Onofrio BM, Rickert ME *et al.* Maternal infection requiring hospitalization during pregnancy and attention-deficit hyperactivity disorder in offspring: a quasi-experimental family-based study. *J Child Psychol Psychiatry* 2019;60:160–68.
50. Jorgensen KT, Harpoe MC, Jacobsen S, Jess T, Frisch M. Increased risk of rheumatoid arthritis in women with pregnancy complications and poor self-rated health: a study within the Danish National Birth Cohort. *Rheumatology (Oxford)* 2014;53:1513–19.
51. Hu ZD, Deng AM. Autoantibodies in pre-clinical autoimmune disease. *Clin Chim Acta* 2014;437:14–18.

52. Sorensen J, Hetland ML; all departments of rheumatology in Denmark. Diagnostic delay in patients with rheumatoid arthritis, psoriatic arthritis and ankylosing spondylitis: results from the Danish nationwide DANBIO registry. *Ann Rheum Dis* 2015;74:e12.
53. Kaufmann M, Kuhle J, Puhon MA *et al.*; Swiss Multiple Sclerosis Registry (SMSR). Factors associated with time from first symptoms to diagnosis and treatment initiation of multiple sclerosis in Switzerland. *Mult Scler J Exp Transl Clin* 2018;4:2055217318814562.
54. Thapar A, Rice F, Hay D *et al.* Prenatal smoking might not cause attention-deficit/hyperactivity disorder: evidence from a novel design. *Biol Psychiatry* 2009;66:722–27.
55. Larsson H, Rydén E, Boman M, Långström N, Lichtenstein P, Landén M. Risk of bipolar disorder and schizophrenia in relatives of people with attention-deficit hyperactivity disorder. *Br J Psychiatry* 2013;203:103–06.
56. Munafo MR, Tilling K, Taylor AE, Evans DM, Davey Smith G. Collider scope: when selection bias can substantially influence observed associations. *Int J Epidemiol* 2018;47:226–35.
57. Dalsgaard S, Ostergaard SD, Leckman JF, Mortensen PB, Pedersen MG. Mortality in children, adolescents, and adults with attention deficit hyperactivity disorder: a nationwide cohort study. *Lancet* 2015;385:2190–96.
58. Jakobsson GL, Sternegård E, Olén O *et al.* Validating inflammatory bowel disease (IBD) in the Swedish National Patient Register and the Swedish Quality Register for IBD (SWIBREG). *Scand J Gastroenterol* 2017;52:216–21.
59. Lindstrom U, Exarchou S, Sigurdardottir V *et al.* Validity of ankylosing spondylitis and undifferentiated spondyloarthritis diagnoses in the Swedish National Patient Register. *Scand J Rheumatol* 2015;44:369–76.
60. Waldenlind K, Eriksson JK, Grewin B, Askling J. Validation of the rheumatoid arthritis diagnosis in the Swedish National Patient Register: a cohort study from Stockholm County. *BMC Musculoskelet Disord* 2014;15:432.
61. Arkema EV, Jönsen A, Rönnblom L, Svenungsson E, Sjöwall C, Simard JF. Case definitions in Swedish register data to identify systemic lupus erythematosus. *BMJ Open* 2016;6:e007769.
62. Cepeda MS, Boston R, Farrar JT, Strom BL. Comparison of logistic regression versus propensity score when the number of events is low and there are multiple confounders. *Am J Epidemiol* 2003;158:280–87.