



Drug Use and Cancer Risk: A Drug-Wide Association Study (DWAS) in Norway **ACE**

Nathalie C. Støer¹, Edoardo Botteri², G. Hege Thoresen^{3,4}, Øystein Karlstad⁵, Elisabete Weiderpass⁶, Søren Friis⁷, Anton Pottegård⁸, and Bettina K. Andreassen¹

ABSTRACT

Background: Population-based pharmaco-epidemiologic studies are used to assess postmarketing drug safety and discover beneficial effects of off-label drug use. We conducted a drug-wide association study (DWAS) to screen for associations between prescription drugs and cancer risk.

Methods: This registry-based, nested case-control study, 1:10 matched on age, sex, and date of diagnosis of cases, comprises approximately 2 million Norwegian residents, including their drug history from 2004 to 2014. We evaluated the association between prescribed drugs, categorized according to the anatomical therapeutic chemical (ATC) classification system, and the risk of the 15 most common cancer types, overall and by histology. We used stratified Cox regression, adjusted for other drug use, comorbidity, county, and parity, and explored dose-response trends.

Results: We found 145 associations among 1,230 drug-cancer combinations on the ATC2-level and 77 of 8,130 on the ATC4-

level. Results for all drug-cancer combinations are presented in this article and an online tool (<https://pharmacoepi.shinyapps.io/drugwas/>). Some associations have been previously reported, that is, menopausal hormones and breast cancer risk, or are likely confounded, that is, chronic obstructive pulmonary diseases and lung cancer risk. Other associations were novel, that is, inverse association between proton pump inhibitors and melanoma risk, and carcinogenic association of propulsives and lung cancer risk.

Conclusions: This study confirmed previously reported associations and generated new hypotheses on possible carcinogenic or chemopreventive effects of prescription drugs. Results from this type of explorative approach need to be validated in tailored epidemiologic and preclinical studies.

Impact: DWAS studies are robust and important tools to define new drug-cancer hypotheses.

Introduction

Safety monitoring of marketed pharmaceutical drugs mainly relies on the spontaneous reporting of adverse effects by health-care professionals and drug users. However, the importance of using the full spectrum of evidence, including observational studies, has long been acknowledged (1). It may not be until hundreds of thousands of patients have used a medication that rare but possibly serious adverse events may appear, such as cancer. This, and a typically long induction period, is why population-based pharmacoepidemiological studies have been indicated as a powerful tool for post-marketing pharmacovigilance (2).

Large, hypothesis-free, screening studies to detect associations between genes (GWAS-genome-wide association studies), environ-

mental variables (EWAS-environmental-wide association studies) or prescribed drugs (DWAS-drug-wide association studies) and disease-related phenotypes have become feasible with advances in technology and data availability. In the Kaiser Permanente Medical Care Program (3), as well as in Danish (2) and Swedish (4) drug use-cancer risk screening studies, researchers identified several novel associations. Follow-up investigation of these signals may potentially reveal carcinogenic effects of prescription drugs (5, 6) or lead to eventual chemopreventive repurposing drugs (7).

We present a nationwide population- and registry-based nested case-control study comprising approximately 2 million people in Norway (8). We searched for associations between prescription drugs and risk for the 15 most common cancer types. We focused on the interpretation of interesting signals in the light of potential confounding. We also present an easy-to-use interactive online tool (<https://pharmacoepi.shinyapps.io/drugwas/>) displaying modifiable figures and tables of results.

Materials and Methods

Data sources and study design

Study design and methodological details have been published in the protocol (8). Briefly, all adult subjects (ages 18–85) with a primary cancer diagnosis between January 1, 2007 and December 31, 2015 were selected from the Cancer Registry of Norway (CRN). For each cancer case, 10 cancer-free controls matched on birth year, gender, and index date (i.e., date of cancer diagnosis) were sampled from the Norwegian population. Thus, the study design is a nested case-control design with incidence density sampling, one case-control study for each cancer type (8). Cancer information was obtained from the CRN. Prescription drugs, classified according to the anatomical therapeutic chemical (ATC) classification system (9) were collected from the Norwegian Prescription Database that contains all drugs dispensed

¹Department of Research, Cancer Registry of Norway, Oslo, Norway. ²Section for Colorectal Cancer Screening, Cancer Registry of Norway, Oslo, Norway. ³Department of Pharmacology, Institute of Clinical Medicine, University of Oslo, Oslo, Norway. ⁴Department of Pharmacy, Section for Pharmacology and Pharmaceutical Biosciences, University of Oslo, Oslo, Norway. ⁵Department of Chronic Diseases and Ageing, Norwegian Institute of Public Health, Oslo, Norway. ⁶International Agency for Research on Cancer, World Health Organization, Lyon, France. ⁷Danish Cancer Society Research Center, Danish Cancer Society, Copenhagen, Denmark. ⁸Department of Public Health, Clinical Pharmacology and Pharmacy, University of Southern Denmark, Odense, Denmark.

Note: Supplementary data for this article are available at Cancer Epidemiology, Biomarkers & Prevention Online (<http://cebp.aacrjournals.org/>).

Corresponding Author: Bettina K. Andreassen, Cancer Registry of Norway, Oslo 0379, Norway. Phone: 47-2-292-8882; E-mail: b.k.andreassen@krefregisteret.no

Cancer Epidemiol Biomarkers Prev 2020;XX:XX-XX

doi: 10.1158/1055-9965.EPI-20-1028

©2020 American Association for Cancer Research.

from pharmacies to patients in ambulatory care. The Norwegian Patient Registry provided information on comorbidities and the Medical Birth Registry of Norway on parity.

Exposures and Outcome

Drug use

All drug exposure was based on prescriptions from January 1, 2004 up to one year before index date for cases and controls to reduce the possibility of reverse causation. All drug–cancer associations were analyzed on the ATC2- and ATC4-level, as well as some associations on the ATC5-level. We used the ATC classification system 2017 version, where active substances are classified in a hierarchy with five different levels, according to anatomical/pharmacological (ATC1-level), therapeutic/pharmacological/chemical subgroups (ATC2- to ATC4-level) and active substance (ATC5-level; refs. 10–12).

Drug use was categorized according to number of prescriptions filled up to one year before index date; non-use (0–1 prescription), intermediate use (2–7 prescriptions), and long-term use (≥ 8 prescriptions).

The main exposure was long-term use, corresponding to approximately 2 years of use assuming a duration of 3 months per prescription filled. When analyzing long-term use of drugs on the ATC4-level, non-users of the particular drug class who had used other drugs within the same ATC2-level were put in a separate category to keep a clean reference category (non-use). Dose–response relationships for the ATC2- and ATC4-level were assessed for all drug and cancer type combinations with signals when comparing long-term use versus non-use (signal defined below).

Dose–response relationships

Dose–response relationships for the ATC2- and ATC4-level were assessed for all signals from the drug use–cancer risk association testing (long-term use vs. non-use). The ATC-level–specific cumulative defined daily doses (DDD) were categorized according to quintiles among the users with one additional category for the non-users. If not, all quintiles could be uniquely defined (due to many equal cumulative DDDs) or if there were less than 100 users of the particular drug, the cumulative DDDs were categorized according to tertiles.

We classified dose–response relationships as continuously increasing or decreasing (in short: dose–response relationships) or associations mainly independent of dose. The criteria for detrimental or protective dose–response relationships was defined as at least one dose–response signal with an unadjusted *P* value of less than 0.1 and that each hazard ratio (HR) was larger (detrimental associations) or smaller (protective associations) than the previous dose category. One single exception (a miss) from this rule was allowed, but the following estimate had to be larger/smaller than the estimate before the miss. The criteria for associations mainly independent of dose was defined as not being among dose–response relationships and that all HRs and $HR = 1$ were included in a $\pm 10\%$ interval around the mean of all HRs (excluding non-user category). Some ATC-codes do not have a DDD, for instance A10BA02, and when cumulating DDD's over ATC2- or ATC4 levels these prescriptions were not included in the calculation of dose–response relationships.

Cancer outcome

Cancer cases were categorized by topography according to the International Classification of Disease Tenth Revision (ICD-10) as in the publication “Cancer in Norway” (13). We included the 15 most

common cancer types in Norway (**Table 1**). This choice ensured at least 70% power for at least 80% of the ATC2-categories. We also categorized each cancer type by major histological subtype and reported results for the most common ones ($\geq 20\%$ of all cases out of all cancers of a certain type).

Covariates

For comorbidities, we used the Patient Registry Index (PRI) with 15 levels, a modified version of Charlson Comorbidity Index (14). Long-term use of other medications (other drug use), defined as whether the patients are long-term users of drugs from other drug groups on the same ATC-level than the drug of interest, was set as a binary indicator. County of residence was categorized according to the four health regions in Norway (north, mid, south-east, west and unknown). Parity was defined for females at index date.

Statistical analysis

We used Cox regression models stratified by case–control sets to obtain HRs with 95% confidence intervals (CI). We adjusted all estimates for comorbidity index (continuous variable), use of other drugs and county of residence. The estimates of drug associations with female cancers (breast, endometrial, and ovarian) were additionally adjusted for parity (continuous variable).

The main analyses evaluated the associations between long-term drug use versus non-use and the risk of cancer (on topographical level and by histological subgroups). To assess dose–response associations, we analyzed the cumulative DDD, which was analyzed as a factor with the lowest user category as the reference.

We required at least 10 cases and controls in the long-term user and non-user group for a drug–cancer combination to be analyzed.

To quantify the effect of covariates on effect estimates, we calculated the change in HR estimates for all drug–cancer combinations by comparing the HR estimates from the statistical models with and without adjustment.

All statistical analyses were performed using R version 3.4.4 (<http://cran.r-project.org>).

Multiple testing

For each ATC-level, we adjusted for multiple testing based on the number of tested drug groups within each cancer type using Bonferroni (15), thus treating each nested case–control study as independent and the tests for the different drug groups as dependent. In the following, associations with adjusted *P* values below 0.05 were considered to be associations or signals. Associations were considered as detrimental when $HR > 1$ and protective when $HR < 1$.

Comparison with other drug–cancer screening results

We evaluated how many of our signals were also found in the association screening studies performed previously (2, 4). As the Swedish screening solely included associations between drugs (ATC4-level) and breast, colon and prostate cancer (in addition to cancer overall), we only compared the results for these three cancer types and we relied solely on the results from the Cox regression. We compared the Danish screening results with ours by comparing results on the ATC4-level for histological subtypes.

Results

The total number of cases and controls included in this study as well as the distribution of sex, age, region, comorbidity and parity (for female cancers only) are presented in **Table 1**.

Table 1. Descriptive characteristics of cases and controls for each cancer type.

| | N | Sex Male (%) | Age Median (IQR) | Region of residence | | | | Comorbidity (PRI) | | | | Parity | | | | | | |
|--------------------|---------|--------------------|------------------------|---------------------|---------------|--------------|----------------|-------------------|--------------|-------------|------------|--------------|-------------|--|--|--|--|--|
| | | | | South east n (%) | West n (%) | Mid n (%) | North n (%) | 0 n (%) | 1-2 n (%) | ≥3 n (%) | 0 n (%) | 1-2 n (%) | ≥3 n (%) | | | | | |
| Stomach | | | | | | | | | | | | | | | | | | |
| Cases | 3,077 | 64% | 69 (60, 78) | 1,501 (49%) | 656 (21%) | 495 (16%) | 415 (13%) | 2,537 (82%) | 345 (11%) | 195 (6%) | | | | | | | | |
| Controls | 30,770 | | | 16,855 (55%) | 5,901 (19%) | 4,411 (14%) | 3,049 (10%) | 26,494 (86%) | 2,835 (9%) | 1,441 (5%) | | | | | | | | |
| Colon | | | | | | | | | | | | | | | | | | |
| Cases | 16,830 | 49% | 71 (63, 78) | 8,989 (53%) | 3,512 (21%) | 2,508 (15%) | 1,758 (10%) | 13,992 (83%) | 1,888 (11%) | 950 (6%) | | | | | | | | |
| Controls | 168,299 | | | 93,051 (55%) | 31,650 (19%) | 23,732 (14%) | 17,208 (10%) | 142,824 (85%) | 16,969 (10%) | 8,506 (5%) | | | | | | | | |
| Rectum | | | | | | | | | | | | | | | | | | |
| Cases | 8,841 | 60% | 68 (60, 76) | 4,830 (55%) | 1,888 (21%) | 1,216 (14%) | 888 (10%) | 7,682 (87%) | 776 (9%) | 383 (4%) | | | | | | | | |
| Controls | 88,410 | | | 48,429 (55%) | 16,850 (19%) | 12,592 (14%) | 8,942 (10%) | 76,368 (86%) | 8,239 (9%) | 3,803 (4%) | | | | | | | | |
| Pancreas | | | | | | | | | | | | | | | | | | |
| Cases | 4,716 | 52% | 70 (62, 78) | 2,609 (55%) | 851 (18%) | 709 (15%) | 532 (11%) | 3,814 (81%) | 573 (12%) | 329 (7%) | | | | | | | | |
| Controls | 47,160 | | | 26,054 (55%) | 8,811 (19%) | 6,695 (14%) | 4,812 (10%) | 40,245 (85%) | 4,635 (10%) | 2,280 (5%) | | | | | | | | |
| Lung | | | | | | | | | | | | | | | | | | |
| Cases | 19,040 | 55% | 69 (62, 76) | 10,782 (57%) | 3,588 (19%) | 2,525 (13%) | 2,061 (11%) | 14,387 (76%) | 2,888 (15%) | 1,765 (9%) | | | | | | | | |
| Controls | 190,400 | | | 105,389 (55%) | 35,758 (19%) | 26,817 (14%) | 19,553 (10%) | 162,421 (85%) | 18,704 (10%) | 9,275 (5%) | | | | | | | | |
| Bladder | | | | | | | | | | | | | | | | | | |
| Cases | 9,250 | 74% | 70 (63, 78) | 5,094 (55%) | 1,702 (18%) | 1,323 (14%) | 1,109 (12%) | 7,453 (81%) | 1,124 (12%) | 673 (7%) | | | | | | | | |
| Controls | 92,499 | | | 50,534 (55%) | 17,391 (19%) | 13,423 (15%) | 9,514 (10%) | 77,595 (84%) | 9,694 (10%) | 5,210 (6%) | | | | | | | | |
| Kidney | | | | | | | | | | | | | | | | | | |
| Cases | 5,036 | 68% | 65 (56, 73) | 2,770 (55%) | 927 (18%) | 813 (16%) | 519 (10%) | 4,133 (82%) | 591 (12%) | 312 (6%) | | | | | | | | |
| Controls | 50,360 | | | 27,602 (55%) | 9,659 (19%) | 6,915 (14%) | 5,090 (10%) | 43,852 (87%) | 4,433 (9%) | 2,075 (4%) | | | | | | | | |
| Melanoma | | | | | | | | | | | | | | | | | | |
| Cases | 11,964 | 50% | 61 (50, 71) | 7,197 (60%) | 2,529 (21%) | 1,483 (12%) | 708 (6%) | 10,623 (89%) | 902 (8%) | 439 (4%) | | | | | | | | |
| Controls | 119,638 | | | 65,555 (55%) | 23,020 (19%) | 16,457 (14%) | 11,769 (10%) | 105,903 (89%) | 9,488 (8%) | 4,247 (4%) | | | | | | | | |
| Breast | | | | | | | | | | | | | | | | | | |
| Cases | 23,342 | 0% | 60 (51, 68) | 13,565 (58%) | 4,507 (19%) | 3,186 (14%) | 2,037 (9%) | 21,244 (91%) | 1,493 (6%) | 605 (3%) | | | | | | | | |
| Controls | 233,415 | | | 130,567 (56%) | 44,880 (19%) | 31,970 (14%) | 22,826 (10%) | 212,112 (91%) | 15,550 (7%) | 5,753 (2%) | | | | | | | | |
| Endometrial | | | | | | | | | | | | | | | | | | |
| Cases | 5,315 | 0% | 67 (58, 73) | 3,107 (58%) | 1,030 (19%) | 675 (13%) | 493 (9%) | 4,745 (89%) | 419 (8%) | 151 (3%) | | | | | | | | |
| Controls | 53,149 | | | 29,712 (56%) | 10,028 (19%) | 7,536 (14%) | 5,293 (10%) | 47,122 (89%) | 4,375 (8%) | 1,652 (3%) | | | | | | | | |
| Ovarian | | | | | | | | | | | | | | | | | | |
| Cases | 3,377 | 0% | 64 (55, 72) | 1,994 (59%) | 644 (19%) | 414 (12%) | 310 (9%) | 3,034 (90%) | 253 (7%) | 90 (3%) | | | | | | | | |
| Controls | 33,770 | | | 18,927 (56%) | 6,376 (19%) | 4,689 (14%) | 3,348 (10%) | 30,366 (90%) | 2,474 (7%) | 930 (3%) | | | | | | | | |
| Prostate | | | | | | | | | | | | | | | | | | |
| Cases | 35,441 | 100% | 68 (63, 74) | 19,371 (55%) | 7,386 (21%) | 5,260 (15%) | 3,392 (10%) | 30,315 (86%) | 3,488 (10%) | 1,638 (5%) | | | | | | | | |
| Controls | 354,409 | | | 194,071 (55%) | 67,009 (19%) | 50,414 (14%) | 36,996 (10%) | 298,220 (84%) | 37,031 (10%) | 19,158 (5%) | | | | | | | | |
| CNS | | | | | | | | | | | | | | | | | | |
| Cases | 7,644 | 46% | 59 (46, 69) | 4,140 (54%) | 1,630 (21%) | 1,055 (14%) | 784 (10%) | 6,929 (91%) | 509 (7%) | 206 (3%) | | | | | | | | |
| Controls | 76,440 | | | 41,972 (55%) | 14,577 (19%) | 10,289 (13%) | 7,361 (10%) | 69,754 (91%) | 4,754 (6%) | 1,932 (3%) | | | | | | | | |
| NH-lymphoma | | | | | | | | | | | | | | | | | | |
| Cases | 6,369 | 55% | 66 (57, 74) | 3,548 (56%) | 1,196 (19%) | 926 (15%) | 678 (11%) | 5,430 (85%) | 649 (10%) | 290 (5%) | | | | | | | | |
| Controls | 63,689 | | | 34,943 (55%) | 12,117 (19%) | 8,956 (14%) | 6,418 (10%) | 55,561 (87%) | 5,547 (9%) | 2,581 (4%) | | | | | | | | |
| Leukemia | | | | | | | | | | | | | | | | | | |
| Cases | 6,399 | 57% | 67 (58, 76) | 3,808 (60%) | 1,269 (20%) | 789 (12%) | 509 (8%) | 5,303 (83%) | 701 (11%) | 395 (6%) | | | | | | | | |
| Controls | 63,990 | | | 35,033 (55%) | 12,290 (19%) | 8,935 (14%) | 6,346 (10%) | 55,345 (86%) | 5,789 (9%) | 2,856 (4%) | | | | | | | | |

Long-term drug use

The first analysis evaluated the associations between combinations of all drugs and all 15 cancer types included in this study. The results are illustrated in Fig. 1 (ATC2-level) and Supplementary Fig. S1A–S1V (ATC4-level). Although Fig. 1 focuses on ATC2-level results, combinations for which ATC4-level signals (and no ATC2-level signal) were detected were highlighted by the ATC4 code. HRs, CIs, and *P* values are presented in Supplementary Table S1 (ATC2-level) and Supplementary Table S2 (ATC4-level) as well as in our online interactive tool (<https://pharmacoepi.shinyapps.io/drugwas/>).

ATC2-level

On the ATC2-level, we investigated 15 cancer types against 82 drug classes (i.e., 1,230 combinations), and found 145 (11.8%) signals (Fig. 1; blue/red corresponding to protective/detrimental associations). These signals were unevenly distributed across cancer types, with most signals for lung cancer (22 detrimental, 9 protective). Lung and kidney cancer had the highest number of detrimental signals (22 and 21, respectively). Prostate cancer had the highest number of protective signals (9). The drug classes with the most signals were antibacterials for systemic use (J01; 8 detrimental, 1 protective), analgesics (N02; 6 detrimental, 2 protective) and antidiabetics (A10; 6 detrimental, 2 protective). As shown in Fig. 1, the power was high (>90%) for about two third of all investigated ATC2 codes.

ATC4-level

On the ATC4-level, we investigated 15 cancer types against 542 drug classes (i.e., 8,130 combinations) and found 77 (0.9%) signals (64 detrimental, 13 protective). The majority of the detrimental signals (39) were observed for lung cancer. Four combinations did not have an unadjusted signal on the corresponding ATC2 level and where thus marked with the ATC4 level codes in Fig. 1.

Overall, we observed that the signals involving antibacterials for systemic use (J01) were mainly based on penicillins (J01CA/E), tetracyclines (J01AA), macrolides (J01FA), and trimethoprim/sulfonamides (J01EA/E). The statistical power was low to moderate for the majority of combinations assessed.

The ATC4-level signals resulting from drugs used in diabetes (A10) were mainly driven by intermediate-acting insulins (A10AC) and the blood glucose-lowering drugs biguanides (A10BA) and sulfonylureas (A10BB). The signals for these drugs were mainly detrimental for stomach, colon, rectum, pancreas, kidney, and endometrial cancer and protective for lung and prostate cancer. The power to detect associations was moderate to high.

For analgesics, the by far strongest ATC4-level signals were seen for lung cancer risk related to intake of natural opium alkaloids, phenylpiperidine and diphenylpropylamine derivatives (N02AA/B/C), opioids (plain or in combination with non-opioid analgesics N02AJ/X) and anilides (paracetamol N02BE). Most signals for other relevant cancer types were cumulative for opioids and anilides. The power for the corresponding ATC4 analyses was generally low, but moderate or high for opioids and anilides.

Dose-response analysis

We evaluated which signals from the long-term use analysis were confirmed in the dose-response analysis (Fig. 1; arrow up/down corresponding to detrimental/protective dose-response associations, square corresponding to an association mainly independent of dose). Among 145 signals, we identified 23 detrimental and 10 protective dose-response relationships. Additional 50 signals were classified as

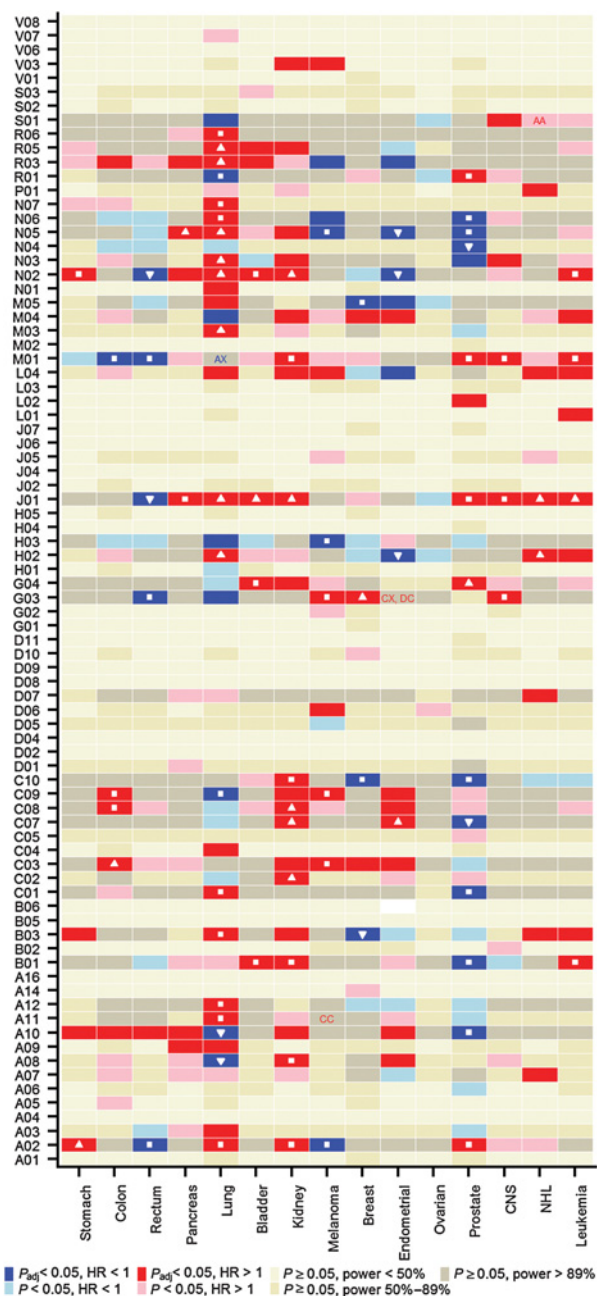


Figure 1.

Heatmap of associations between prescribed drugs on ATC2 level and 15 cancer types. Cells marked with arrows indicate protective (arrow down) and detrimental (arrow up) dose-response relationships, and cells marked with squares indicate associations mainly independent of dose. *P*, unadjusted *P* value; *P*_{adj}, multiple testing adjusted *P* value.

associations mainly independent of dose (33 detrimental, 17 protective associations).

Histological subtypes

We evaluated the risk of drugs for specific histological subtypes and illustrated the results in Supplementary Fig. S2 (ATC2-level) and Supplementary Fig. S3A–S3V (ATC4-level) as well as in our online

tool. HRs, CIs, and *P* values are presented in Supplementary Table S3 (ATC2-level) and Supplementary Table S4 (ATC4-level).

The role of covariates as potential confounders

Observed and modeled confounders in our dataset are county of residence, other drug use, comorbidity, and parity (for female cancers only). The distribution of observed potential confounders is presented in **Table 1**. The impact of county of residence on cancer risk is most obvious when investigating drug use related to melanoma, stomach, and leukemia. **Table 1** also indicates that there is no difference between cases and controls with respect to underlying comorbidities, except for smoking-related cancers, that is, lung, bladder, and kidney cancer. For female cancers, it can be seen that cases had lower parity than controls.

Proof of concept

We first verified that well-known associations emerged in our study. As expected, we found a protective association between aspirin use and colorectal cancer (ref. 16; ATC code B01AC06; HR, 0.91; 95% CI, 0.84–0.97). We also observed an association between use of menopausal hormone therapy and increased risk of breast cancer, both for estrogens only (G03C; HR, 1.16; 95% CI, 1.04–1.31) and progestins and estrogens in combination (G03F; HR, 2.07; 95% CI, 1.82–2.35), consistent with randomized and observational studies (17).

Second, we evaluated the agreement between our results and those from two other recent studies based on data from Sweden (4) and Denmark (**Table 2**; ref. 18): 8 of our 10 signals in breast, colon, and prostate cancer on the ATC4-level, were also found in the Swedish study. The Danish study was based on histological subtypes and ATC4-level: Of the 95 signals in both datasets with matching drug–histologic subtype cancer risk combination, 25 of these had concordant results. Additional 7 signals show up when allowing signals on the same ATC3-level to replicate a particular finding on the ATC4-level.

Unexpected signals

Some unexpected associations emerged from our analyses, which had not been reported in earlier epidemiological studies. We report

here three examples: (i) a protective association between drugs that decrease the production of stomach acid [H₂-receptor antagonists (A02BA) and proton pump inhibitors (A02BC)] and melanoma risk, (ii) a protective association between anticholinesterases (N06DA), a class of anti-dementia drugs, and lung, colon and particularly prostate cancer, and (iii) an association between use of propulsives (A03FA), a type of drug used to reduce nausea and vomiting, and increased risk of lung cancer.

Discussion

We have presented the results of a population-based nested case–control study (8) involving approximately 2 million residents in Norway, and evaluated associations between prescribed drugs and cancer risk for the 15 most common cancer types and corresponding histological subtypes.

Discussion of results

As for the analysis on the ATC2-level, the majority of the detrimental associations (39) were observed for lung cancer. This is not surprising, as lung cancer is heavily associated with smoking, which also causes numerous other diseases related to lung function, such as COPD (19) and inflammations (20). The drug classes with most signals were antibacterials for systemic use, analgesics, and drugs used in diabetes. Confounding by indication might also explain a substantial proportion of these other findings. For example, diabetes and obesity are risk factors for several cancer types (21) and extensive antibiotics use might be related to inflammations (22) and bacterial infections (23), associated directly with cancer development. Confounders, observed and unobserved, known and unknown, thereby play an important role when interpreting the results of our study. This concerns in particular life-style variables, including smoking, alcohol intake or BMI (24, 25). As an example, obesity and other related life-style factors represent essential confounders of the observed detrimental associations between drugs used in diabetes (A10) and the risk of colon, endometrial, kidney, pancreas, rectum and stomach cancer (21). The protective association between the intake of antidiabetic

Table 2. Number of replicated findings with corresponding ATC4 codes in the Danish and Swedish studies.

| Cancer type | Denmark | | Sweden | |
|--------------------------------|-------------------------------|---|-------------------------------|----------------------------|
| | Number of replicated findings | ATC4-codes | Number of replicated findings | ATC4-codes |
| Prostate | 1 of 7 | N06DA, N05AA (ATC3: N05AB/N05AH), N03AF (ATC3: N03AA/N03AB) | 4 of 5 | G04BE, G04CA, N05AA, N06DA |
| Colon | 0 of 1 | M01AB (ATC3: M01AG) | 0 of 1 | |
| Breast | 1 of 4 | C10AA (ATC3: C10AD), G03FA, G03FB (ATC3:G03FA) | 4 of 4 | G03FA, G03FB, C10AA, G03CX |
| Stomach | 0 of 1 | | | |
| Bladder | 2 of 4 | R03BB, J01CA | | |
| Pancreas | 0 of 2 | | | |
| Kidney | 2 of 9 | A11CC, C08CA | | |
| Melanoma | 1 of 4 | G03AA | | |
| CNS | 0 of 1 | | | |
| NHL | 0 of 4 | S01AA (ATC3: S01AX) | | |
| Leukemia | 0 of 3 | M01AE (ATC3: M01AB) | | |
| Lung (adenocarcinoma) | 4 of 13 | J01FA, N05BA, N05CD, R03AC | | |
| Lung (squamous cell carcinoma) | 9 of 20 | J01CE, J01FA, N02AX, N02BE, N05BA, N05CD, R03AC, R05CB, R05FA | | |
| Lung (other) | 5 of 22 | J01CE, M03BA, N05BA, R03AC, R03BA | | |

drugs and the risk of prostate cancer may also rely on confounding by indication as diabetes has been shown to be associated with a lower risk of prostate cancer (26). The largest risk related to the use of antibacterials was observed for bladder and urinary tract cancer and suffers from a confounding by indication bias as the indication (urinary tract infection) for taking the actual drug (antibiotics) is a strong risk factor for some subtypes of bladder cancer (27–29).

When considering the observed potential confounders county of residence, other drug use, comorbidity and parity (for female cancers), these factors might either be confounders themselves, or they might act as a proxy for other confounders. For example, place of residency may reflect a different drug use and/or cancer risk pattern on the population level possibly capturing a combination of life-style related variables. County of residency had the largest impact when investigating drug use related to melanoma (related to sun exposure) and stomach cancer risk (related to *H. pylori* infection). Long-term use of other drugs (from other drug groups than the drug of interest) captures whether the effect observed for a specific drug group of interest might be due to the drug group itself or due to another drug group used in combination or supplemental. In this case, the other drug use might directly be associated to the drug under investigation, but may also impact cancer risk, thus acting as a confounder on the drug–cancer association. One example is NSAIDs that are often co-administered with proton pump inhibitors to reduce NSAID-induced gastrointestinal adverse events.

A comparison between our results and recent similar DWAS in Denmark and Sweden indicates concordance in 8 of 10 (Denmark), and 25 of 95 (Sweden) drug–cancer associations. These high proportions of agreement reveal a proof of concept, especially as these studies vary in study design and analytical methods. Another study from the Kaisers Permanente program (3) suggested that the following associations may not be due to chance: Sulindac with gallbladder cancer and leukemia, hyoscyamine with non-Hodgkin lymphoma, nortriptyline with esophageal and hepatic cancer, oxazepam with lung cancer, both fluoxetine and paroxetine with testicular cancer, hydrochlorothiazide with renal and lip cancer, and nifedipine with lip cancer. Among the cancers we included in our study, we found detrimental associations between use of oxazepam (N05BA04) and lung cancer risk (HR, 1.90; unadjusted 95% CI, 1.23–1.50) and a tendency for hydrochlorothiazide (C03AA03) and kidney cancer risk (HR, 1.52; unadjusted 95% CI, 0.93–2.46), whereas the other drug–cancer combinations proposed by the Kaiser Permanente program had too few exposed cases in our study to allow replication.

We presented three examples of unexpected associations from our analyses. To our knowledge, they have not been reported previously in epidemiological studies. Some preclinical evidence exists for two of the examples. Histamine has been reported to be a growth factor for human cell lines from many cancers (30), including melanoma (31) and cancers from the gastrointestinal tract (32). The picture is, however, complicated with divergent effects of histamine depending on the characteristics of the cancer cells (32), possibly explaining why solely melanoma showed a positive association with H₂-receptor antagonists in our study. Proton pump inhibitors will decrease intracellular pH and was found to inhibit melanoma cell growth *in vitro* and in nude mice transplanted with human melanoma (33). The only drug in the group of propulsives is metoclopramide, inhibitor of dopaminergic D₂ receptors. Overexpression of D₂ receptors was found to inhibit growth in non-small cell lung cancer cell lines (34), and D₂-receptor agonists abrogated lung tumor progression in human xenograft murine models (35). Moreover, pathological examination of human lung cancer tissue revealed a

positive correlation between endothelial D₂ receptor expression and tumor stage (35). However, we did not find any preclinical evidence supporting our findings of a possible protective association between anticholinesterases and a class of anti-dementia drugs, and lung, colon and particularly prostate cancer.

Discussion of methods

Our use of *P* values and thresholds may be criticized (36, 37). However, in all types of statistical screening attempts, the challenge is to separate signals worth following up from irrelevant signals. The *P* value can be used to quantify the strength of the association between a certain drug (or groups of drugs) and cancer risk (38). Thus, we show the *P* values together with the underlying effect estimates, the HR and the corresponding CIs. Furthermore, we use a well-known (5%-adjusted and unadjusted), although arbitrary, threshold to illustrate the findings in the figures. As all effect estimates, including CIs are also shown, the readers can interpret the results in different ways based on own preferences. We acknowledge that our results reveal statistical associations only, not implying causal effects. However, a strong signal might be considered as hypothesis generating and worth further investigation at clinical, molecular or epidemiological levels.

Our study required a priori choices of thresholds to be made, which influences the interpretation of the data. For example, we removed all drug use within the past 12 month before cancer diagnosis (index date) to avoid signals due to reverse causation. There are different thresholds used in the literature as the length of this period is dependent on the disease or outcome of interest, and the detection time. A recent study suggested that 6 month lag was sufficient (39). As we do not have any information on drug use before 2004, some of the non-users of drugs could in fact have been former-users, which potentially weakens the associations found in our study. We also defined chronic drug use as 8 or more prescriptions, which in most cases approximately corresponds to 2 years of drug use. The underlining assumption is that the subjects must be drug exposed over a longer period of time to affect cancer risk.

The scientific value of association studies has been questioned, given their lack of clinical, molecular and lifestyle data, as illustrated by the discussion between Patrignani and colleagues (40) and Pottegård and colleagues (18), after the publication of the Danish screening results. However, the importance of using the full spectrum of evidence, including observational studies, has long been acknowledged (1).

A comparison of our results with other results from similar studies is not straightforward given differences in study design, statistical modeling methods, and criteria for statistical significance of a signal. We chose to compare our results with the Swedish and Danish DWAS (2, 4) by evaluating whether a signal found in our study also had been defined as a signal in the Swedish or Danish datasets, respectively. This is a rather strict way to approach this, but there were still many replications. This does not necessarily imply that the corresponding associations are more likely to be causal. It rather means that even though there are many country- and dataset-specific differences, several associations are robust, as suggested elsewhere (38).

The advantages of our study are the relatively large amount of data based on high-quality registry data leading to the possibility of detecting associations of rare but possibly serious adverse events, such as cancer. Although our study has its limitations, as described above, it is superior to the general medicines' safety monitoring of marketed drugs based on the spontaneous reporting of suspected adverse reactions by health-care professionals, consumers, and drug users (18), in particular for rare and long-term side effects.

In conclusion, this DWAS study verified some previously reported associations and also generated several new hypotheses for potential drug use—cancer risk associations. Some of these new findings are supported by previous preclinical results of hypothesized carcinogenic or chemopreventive effects. However, results of our study need to be validated in more tailored epidemiological studies. Moreover, preclinical studies could provide more insight in biological mechanisms.

Authors' Disclosures

Ø. Karlstad reports participation in two Post-Authorization Safety Studies (PASS) unrelated to the submitted work. The studies are on an antidiabetic drug and an anti-psoriasis drug, and have been imposed by the European Medicines Agency (EMA) and are funded by the marketing authorization holders (Novo Nordisk and Leo Pharma). All funds are paid to the institution where he is employed (no personal fees). The studies are conducted according to the EnCePP Code of Conduct for scientific independence and transparency. No disclosures were reported by the other authors.

Disclaimer

The authors alone are responsible for the views expressed in this article and they do not necessarily represent the decisions, policy, or views of the International Agency for Research on Cancer/World Health Organization.

References

- Laporte JR. Fifty years of pharmacovigilance—medicines safety and public health. *Pharmacoepidem Drug Saf* 2016;25:725–32.
- Pottgård A, Friis S, dePont Christensen R, Habel LA, Gagne JJ, Hallas J. Identification of associations between prescribed medications and cancer: a nationwide screening study. *EBioMedicine* 2016;7:73–9.
- Selby JV, Friedman GD, Fireman BH. Screening prescription drugs for possible carcinogenicity: eleven to fifteen years of follow-up. *Cancer Res* 1989;49:5736–47.
- Patel CJ, Ji J, Sundquist J, Ioannidis JP, Sundquist K. Systematic assessment of pharmaceutical prescriptions in association with cancer risk: a method to conduct a population-wide medication-wide longitudinal study. *Sci Rep* 2016;6:31308.
- Pottgård A, Hallas J, Olesen M, Svendsen MT, Habel LA, Friedman GD, et al. Hydrochlorothiazide use is strongly associated with risk of lip cancer. *J Intern Med* 2017;282:322–31.
- Pottgård A, Pedersen SA, Schmidt SAJ, Hölmich LR, Friis S, Gaist D. Association of hydrochlorothiazide use and risk of malignant melanoma. *JAMA Intern Med* 2018;178:1120–2.
- Bertolini F, Sukhatme VP, Bouche G. Drug repurposing in oncology—patient and health systems opportunities. *Nat Rev Clin Oncol* 2015;12:732–42.
- Andreassen BK, Støer NC, Martinsen JI, Ursin G, Weiderpass E, Thoresen GH, et al. Identification of potential carcinogenic and chemopreventive effects of prescription drugs: a protocol for a Norwegian registry-based study. *BMJ Open* 2019;9:e028504.
- WHO Collaborating Centre for Drug Statistics Methodology. ATC Structure and principles. [Cited 2020 Apr 5]. Available from: https://www.whocc.no/atc/structure_and_principles/.
- WHO Collaborating Centre for Drug Statistics Methodology. ATC/DDD Index. [Cited 2020 Apr 5]. Available from: https://www.whocc.no/atc_ddd_index/.
- WHO Collaborating Centre for Drug Statistics Methodology. Guidelines for ATC classification and DDD assignment 2020. Oslo, Norway; 2019.
- WHO Collaborating Centre for Drug Statistics Methodology. ATC alterations from 2005–2020. Available from: https://www.whocc.no/atc_ddd_alteration_s_cumulative/atc_alterations/.
- Cancer Registry of Norway. Cancer in Norway 2008 - cancer incidence, mortality, survival and prevalence in Norway. Oslo: Cancer Registry of Norway; 2009.
- Nilssen Y, Strand TE, Wiik R, Bakken IJ, Yu XQ, O'Connell DL, et al. Utilizing national patient-register data to control for comorbidity in prognostic studies. *Clin Epidemiol* 2014;6:395–404.
- Benjamini Y, Hochberg Y. Controlling the false discovery rate: a practical and powerful approach to multiple testing. *J R Statist Soc Series B* 1995;57:289–300.
- Flossmann E, Rothwell PM. Effect of aspirin on long-term risk of colorectal cancer: consistent evidence from randomised and observational studies. *Lancet* 2007;369:1603–13.
- Collaborative Group on Hormonal Factors in Breast Cancer. Type and timing of menopausal hormone therapy and breast cancer risk: individual participant meta-analysis of the worldwide epidemiological evidence. *Lancet* 2019;394:1159–68.
- Pottgård A, Friis S, Christensen Rd, Habel LA, Gagne JJ, Hallas J. Time for integrating clinical, lifestyle and molecular data to predict drug responses—authors' reply. *EBioMedicine* 2016;7:11.
- Postma DS, Bush A, van den Berge M. Risk factors and early origins of chronic obstructive pulmonary disease. *Lancet* 2015;385:899–909.
- Lee J, Taneja V, Vassallo R. Cigarette smoking and inflammation: cellular and molecular mechanisms. *J Dent Res* 2012;91:142–9.
- Lauby-Secretan B, Scoccianti C, Loomis D, Grosse Y, Bianchini F, Straif K. Body fatness and cancer—viewpoint of the IARC Working Group. *N Engl J Med* 2016;375:794–8.
- Coussens LM, Werb Z. Inflammation and cancer. *Nature* 2002;420:860–7.
- Parsonnet J. Bacterial infection as a cause of cancer. *Environ Health Perspect* 1995;103:263–8.
- Wu S, Zhu W, Thompson P, Hannun YA. Evaluating intrinsic and non-intrinsic cancer risk factors. *Nat Commun* 2018;9:3490.
- Raghunathan TE, Lepkowski JM, Van Hoewyk J, Solenberger P. A multivariate technique for multiply imputing missing values using a sequence of regression models. *Survey Methodology* 2001;27:85–96.
- Kasper JS, Giovannucci E. A meta-analysis of diabetes mellitus and the risk of prostate cancer. *Cancer Epidemiol Biomarkers Prev* 2006;15:2056–62.
- Akhtar S, Al-Shammari A, Al-Abkal J. Chronic urinary tract infection and bladder carcinoma risk: a meta-analysis of case-control and cohort studies. *World J Urol* 2018;36:839–48.
- Vermeulen SH, Hanum N, Grotenhuis AJ, Castano-Vinyals G, Van Der Heijden AG, Aben KK, et al. Recurrent urinary tract infection and risk of bladder cancer in the Nijmegen bladder cancer study. *Br J Cancer* 2015;112:594–600.
- Pottgård A, Kristensen KB, Friis S, Hallas J, Jensen JB, Nørgaard M. Urinary tract infections and risk of squamous cell carcinoma bladder cancer: a Danish nationwide case-control study. *Int J Cancer* 2020;146:1930–6.
- Faustino-Rocha AI, Ferreira R, Gama A, Oliveira PA, Ginja M. Antihistamines as promising drugs in cancer therapy. *Life Sci* 2017;172:27–41.

Authors' Contributions

N.C. Støer: Software, formal analysis, visualization, methodology, writing—review and editing. E. Botteri: Formal analysis, investigation, writing—review and editing. G.H. Thoresen: Formal analysis, supervision, investigation, writing—review and editing. Ø. Karlstad: Formal analysis, validation, investigation, writing—review and editing. E. Weiderpass: Supervision, validation, writing—review and editing. S. Friis: Conceptualization, investigation, writing—review and editing. A. Pottgård: Conceptualization, methodology, writing—review and editing. B.K. Andreassen: Conceptualization, supervision, validation, investigation, methodology, writing—original draft, project administration.

Acknowledgments

We are grateful to Jan Ivar Martinsen from the Cancer Registry of Norway for data management support. Cherag Patel from Harvard Medical School kindly provided all results from the Cox regression in the Swedish Study.

The costs of publication of this article were defrayed in part by the payment of page charges. This article must therefore be hereby marked *advertisement* in accordance with 18 U.S.C. Section 1734 solely to indicate this fact.

Received August 3, 2020; revised September 11, 2020; accepted October 22, 2020; published first November 3, 2020.

Støer et al.

31. Reynolds JL, Akhter J, Morris DL. In vitro effect of histamine and histamine H1 and H2 receptor antagonists on cellular proliferation of human malignant melanoma cell lines. *Melanoma Res* 1996;6:95–9.
32. Massari NA, Nicoud MB, Medina VA. Histamine receptors and cancer pharmacology: an update. *Br J Pharmacol* 2020;177:516–38.
33. De Milito A, Canese R, Marino ML, Borghi M, Iero M, Villa A, et al. pH-dependent antitumor activity of proton pump inhibitors against human melanoma is mediated by inhibition of tumor acidity. *Int J Cancer* 2010;127:207–19.
34. Wu XY, Zhang CX, Deng LC, Xiao J, Yuan X, Zhang B, et al. Overexpressed D2 dopamine receptor inhibits non-small cell lung cancer progression through inhibiting NF- κ B signaling pathway. *Cell Physiol Biochem* 2018;48:2258–72.
35. Hoeppe LH, Wang Y, Sharma A, Javeed N, Van Keulen VP, Wang E, et al. Dopamine D2 receptor agonists inhibit lung cancer progression by reducing angiogenesis and tumor infiltrating myeloid derived suppressor cells. *Mol Oncol* 2015;9:270–81.
36. Ioannidis JP. What have we (Not) learnt from millions of scientific papers with P values? *Am Stat* 2019;73:20–5.
37. Wasserstein RL, Schirm AL, Lazar NA. Moving to a world beyond “ $P < 0.05$.” Abingdon-on-Thames, United Kingdom: Taylor & Francis; 2019.
38. Pottegård A, Hallas J, Wang SV, Gagne JJ. Identifying signals of interest when screening for drug-outcome associations in health care data. *Br J Clin Pharmacol* 2018;84:1865–7.
39. Pottegård A, Hallas J. New use of prescription drugs prior to a cancer diagnosis. *Pharmacoepidemiol Drug Saf* 2017;26:223–7.
40. Patrignani P, Dovizio M. Time for integrating clinical, lifestyle and molecular data to predict drug responses. *EBioMedicine* 2016;7:9–10.

Cancer Epidemiology, Biomarkers & Prevention

AACR American Association
for Cancer Research

Drug Use and Cancer Risk: A Drug-Wide Association Study (DWAS) in Norway

Nathalie C. Støer, Edoardo Botteri, G. Hege Thoresen, et al.

Cancer Epidemiol Biomarkers Prev Published OnlineFirst November 3, 2020.

Updated version

Access the most recent version of this article at:
doi:[10.1158/1055-9965.EPI-20-1028](https://doi.org/10.1158/1055-9965.EPI-20-1028)

Supplementary Material

Access the most recent supplemental material at:
<http://cebp.aacrjournals.org/content/suppl/2020/11/03/1055-9965.EPI-20-1028.DC1>

E-mail alerts

[Sign up to receive free email-alerts](#) related to this article or journal.

Reprints and Subscriptions

To order reprints of this article or to subscribe to the journal, contact the AACR Publications Department at pubs@aacr.org.

Permissions

To request permission to re-use all or part of this article, use this link
<http://cebp.aacrjournals.org/content/early/2020/11/24/1055-9965.EPI-20-1028>.
Click on "Request Permissions" which will take you to the Copyright Clearance Center's (CCC) Rightslink site.